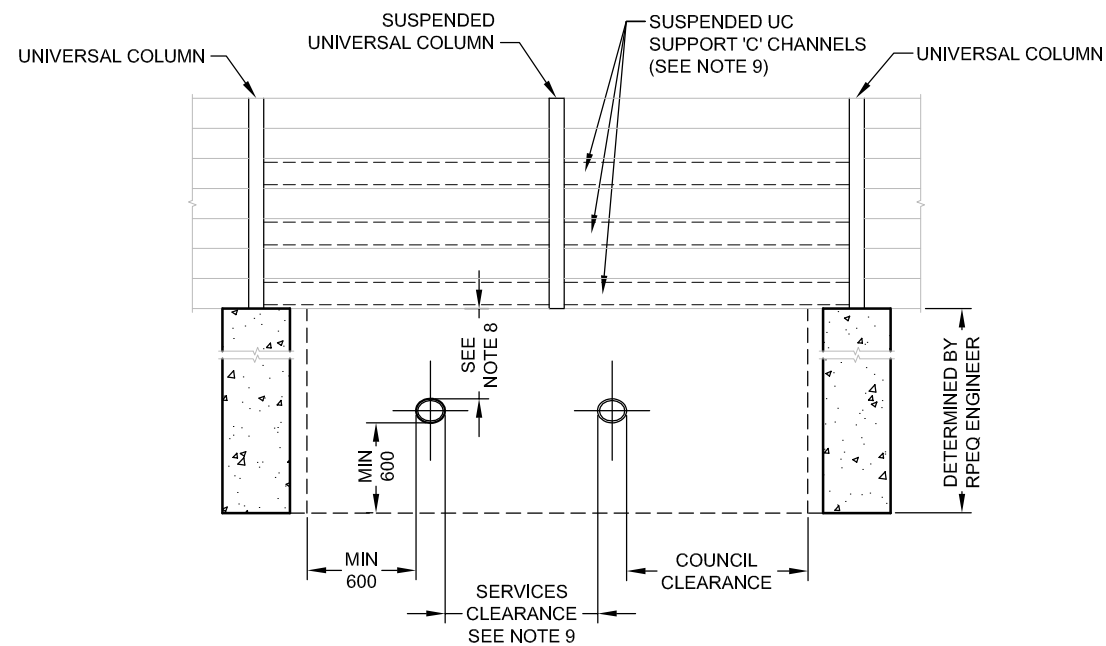
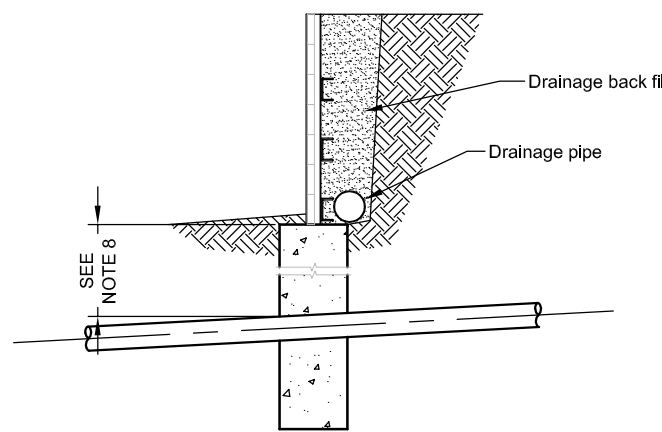


**NOTES:**

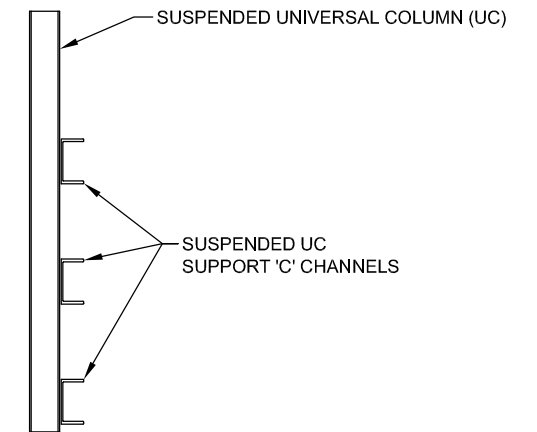
1. ALL DIMENSIONS IN MILLIMETRES.
2. QUU RESERVES THE RIGHT TO INCREASE OR DECREASE CLEARANCES FOR SPECIFIC SITES.
3. MINIMUM CLEARANCES SHOWN ON THIS DRAWING ARE APPLICABLE FOR,
  - DN160 AND DN250 PE SEWER MAINS ONLY.
  - PE SEWER SERVICES ONLY.
4. TOTAL PIER LENGTH IS TO BE DETERMINED BY RPEQ ENGINEER WITH ALL MINIMUM CLEARANCES BEING ACHIEVED.
5. RPEQ CERTIFICATION REQUIRED, CONFIRMING THAT "THE SLEEPER RETAINING WALL AND FOOTINGS WILL NOT PLACE ANY LOAD ON THE SEWERAGE INFRASTRUCTURE"
6. RETAINING WALLS ASSOCIATED WITH A "ROL" DEVELOPMENTS DO NOT REQUIRE BOA REFERRAL.
7. RETAINING WALLS ASSOCIATED WITH ALL OTHER DEVELOPMENTS OR SITES WILL REQUIRE BOA REFERRAL.
8. REFER TO SEQ D&C CODE TABLE 4.8 - MINIMUM COVER OVER SEWERS.
9. REFER TO SEQ D&C CODE TABLE 4.2 - CLEARANCES BETWEEN GRAVITY SEWERS AND OTHER UNDERGROUND SERVICES.
10. THE SUSPENDED UC SUPPORT 'C' CHANNELS ARE TO BE DESIGNED BY RPEQ ENGINEER TO DETERMINE,
  - THE NUMBER, SIZE AND SPACING OF THE 'C' CHANNELS REQUIRED, AND
  - THE METHOD OF FIXINGS REQUIRED.



**SECTION A**



**SECTION B**



**SUSPENDED 'UC' DETAILS**  
SEE NOTE 10

REV.	DATE	DESCRIPTION
01	18/04/19	Original issue
D	11/04/19	Draft - Issued for approval



BOA ALTERNATIVE SOLUTION:  
Concrete sleeper retaining walls adjacent to or over Small Diameter Sewers (PE Sewers Only) 2

QUU BOA DRAWING No.	REV.
<b>BOA-SEW-P1-1201-3</b>	<b>01</b>
Qdox Ref: D/19/332997	