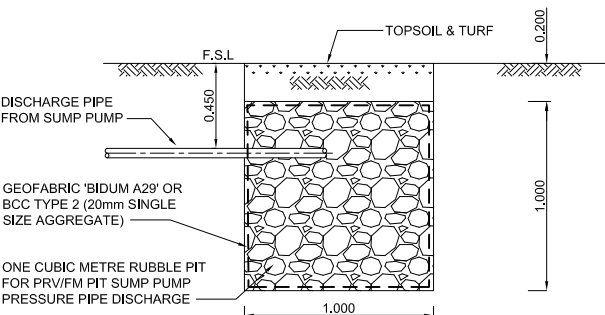
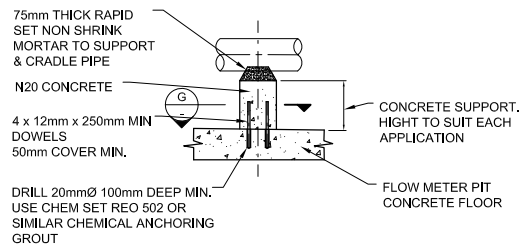
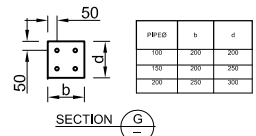


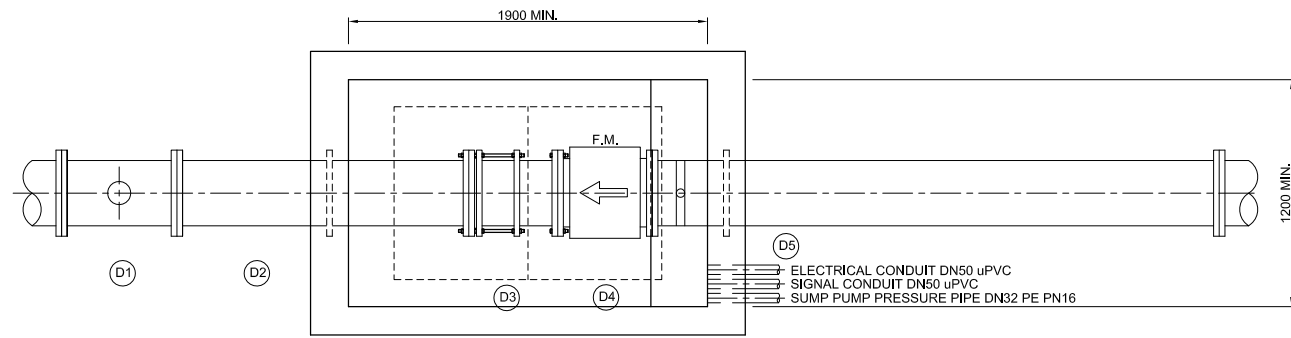
FLOW METER EARTHING DETAIL
SCALE 1:20 (A1)



PRV/FM PIT SUMP PUMP DISCHARGE (NO KERB & CHANNEL)
SCALE 1:20 (A1)

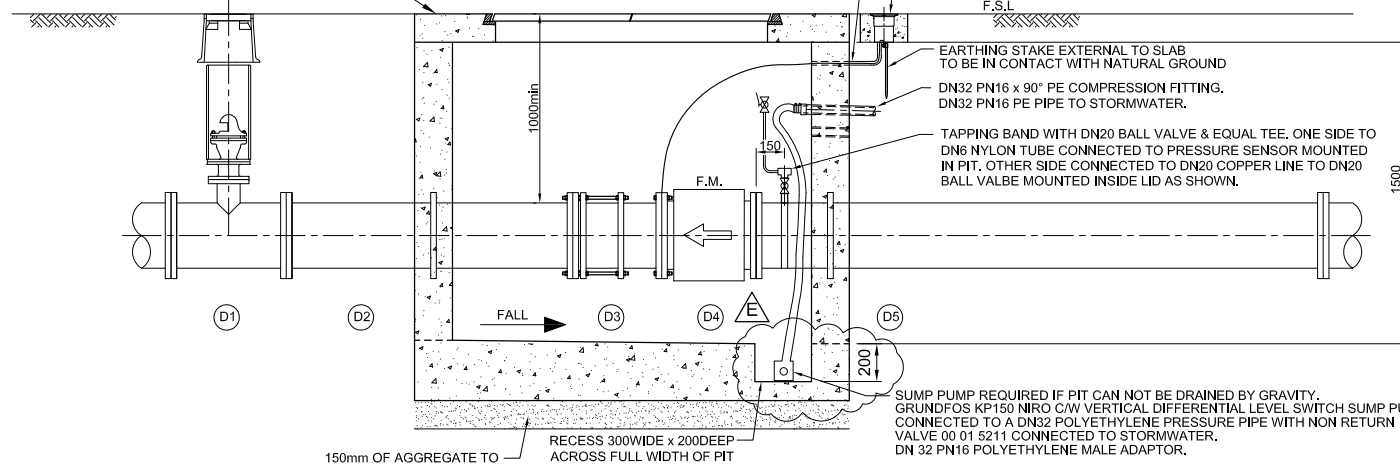


PIPE SUPPORT FOR PITS WITH 100 - 1500 FLOWS METER AND PITS WITH 200 - 3000 PRV'S & FLOW METERS
SCALE 1:20 (A1)

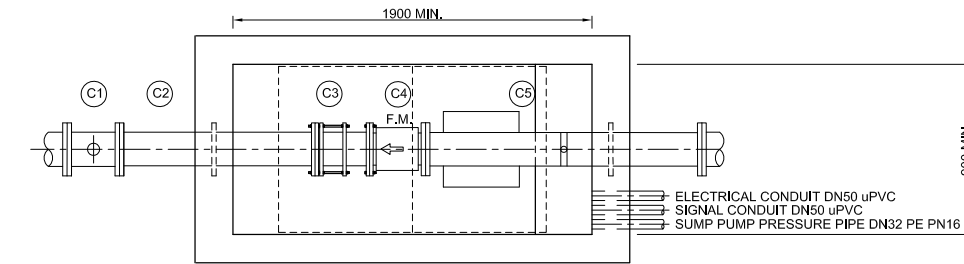


PLAN

PRECAST TOP SLAB WITH 914 x 1416 OPENING AND CAST IRON/CONCRETE FILL LIDS, THE LID SHALL CONFORM TO AS 3996-2006 LOAD CLASS B OR D DEPENDING ON SITE ACCESS CONDITIONS.

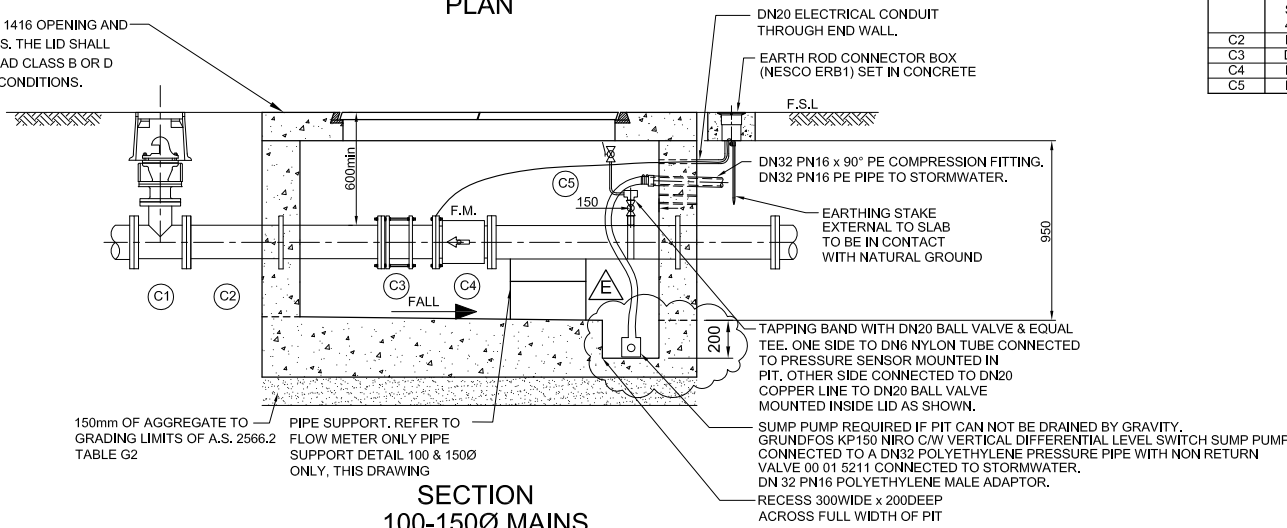


SECTION
200-3000 MAINS
SCALE 1:20 (A1)



PLAN

PRECAST TOP SLAB WITH 914 x 1416 OPENING AND CAST IRON/CONCRETE FILL LIDS, THE LID SHALL CONFORM TO AS 3996-2006 LOAD CLASS B OR D DEPENDING ON SITE ACCESS CONDITIONS.



SECTION
100-1500 MAINS
SCALE 1:20 (A1)

3000 FLOW METER PIT ARRANGEMENT

Item	Description	Length (mm)
D1	DN100 SPRING FIRE HYDRANT WITH TEE, FLANGED RISER, STANDARD HYDRANT CHAMBER AND COVER -REFER TO BRISBANE WATER STANDARD DRAWING 486/4/25-WB003/1 TO WB003/2	REFER PRODUCT DATA
D2	FLANGE TO FLANGE PIPE	1500 MIN.
D3	DISMANTLING JOINT THRUST TYPE	REFER PRODUCT DATA
D4	FLOW METER WITH COMPLETE EARTH RING	REFER PRODUCT DATA
D5	FLANGE TO FLANGE PIPE	3000 MIN.

2500 FLOW METER PIT ARRANGEMENT

Item	Description	Length (mm)
D1	DN100 SPRING FIRE HYDRANT WITH TEE, FLANGED RISER, STANDARD HYDRANT CHAMBER AND COVER -REFER TO BRISBANE WATER STANDARD DRAWING 486/4/25-WB003/1 TO WB003/2	REFER PRODUCT DATA
D2	FLANGE TO FLANGE PIPE	1200 MIN.
D3	DISMANTLING JOINT THRUST TYPE	REFER PRODUCT DATA
D4	FLOW METER WITH COMPLETE EARTH RING	REFER PRODUCT DATA
D5	FLANGE TO FLANGE PIPE	2500 MIN.

2000 FLOW METER PIT ARRANGEMENT

Item	Description	Length (mm)
D1	DN100 SPRING FIRE HYDRANT WITH TEE, FLANGED RISER, STANDARD HYDRANT CHAMBER AND COVER -REFER TO BRISBANE WATER STANDARD DRAWING 486/4/25-WB003/1 TO WB003/2	REFER PRODUCT DATA
D2	FLANGE TO FLANGE PIPE	1200 MIN.
D3	DISMANTLING JOINT THRUST TYPE	REFER PRODUCT DATA
D4	FLOW METER WITH COMPLETE EARTH RING	REFER PRODUCT DATA
D5	FLANGE TO FLANGE PIPE	2000 MIN.

1500 FLOW METER PIT ARRANGEMENT

Item	Description	Length (mm)
C1	DN100 SPRING FIRE HYDRANT WITH TEE, FLANGED RISER, STANDARD HYDRANT CHAMBER AND COVER -REFER TO BRISBANE WATER STANDARD DRAWING 486/4/25-WB003/1 TO WB003/2	REFER PRODUCT DATA
C2	FLANGE TO FLANGE PIPE	900 MIN.
C3	DISMANTLING JOINT THRUST TYPE	REFER PRODUCT DATA
C4	FLOW METER WITH COMPLETE EARTH RING	REFER PRODUCT DATA
C5	FLANGE TO FLANGE PIPE	1500 MIN.

1000 FLOW METER PIT ARRANGEMENT

Item	Description	Length (mm)
C1	DN100 SPRING FIRE HYDRANT WITH TEE, FLANGED RISER, STANDARD HYDRANT CHAMBER AND COVER -REFER TO BRISBANE WATER STANDARD DRAWING 486/4/25-WB003/1 TO WB003/2	REFER PRODUCT DATA
C2	FLANGE TO FLANGE PIPE	900 MIN.
C3	DISMANTLING JOINT THRUST TYPE	REFER PRODUCT DATA
C4	FLOW METER WITH COMPLETE EARTH RING	REFER PRODUCT DATA
C5	FLANGE TO FLANGE PIPE	1500 MIN.

NOTE:-

1. ALL FLOW METER INSTALLATIONS MUST HAVE MIN 10 x DIAMETER STRAIGHT PIPE UPSTREAM OF FLOWMETER AND 5 x DIAMETER DOWNSTREAM



CONST. ISSUE:	CONST. MANAGEMENT BW
CONTACT:	STEV VLAISAVLJEVIC
PHONE:	3403 3506
CLIENT:	PROJECT MANAGEMENT BW
CONTACT:	ROBERT IENTILE
PHONE:	3403 3426
LEVELS:	N/A
PRESSURE:	N/A

AS CONSTRUCTED	
PLOTTED	DATE
CHECKED	DATE

No.	DATE	AMENDMENT	DRAFTED	APPROVED	FUNDED BY B.C.C. (✓) EXTERNAL ()	DRAFTED	W.L.S.	Original Signed by	DATE	Original Signed by	DATE	
E	26/05/10	RECESS DEPTH FOR SUMP PUMP AMENDED	W.L.S	C.E.	FUNDING	DRAFTED	W.L.S.	Original Signed by H. KEMMETMULLER	31/05/2007	Original Signed by F. FORNASIER	01/06/2007	
D	11/06/08	SUMP PUMP NO KERB & CHANNEL DETAIL ADDED	IS	LH	DESIGN W.O. No.	DRAFTING CHECK	T.A.B.			PRINCIPAL DESIGN MANAGER	DATE	
C	7/5/08	PIPE & PRV SUPPORT DETAILS AMENDED	S.H.	L.H.	CONSTRUCTION W.O. No.	CAD FILE	4250005.DWG	Original Signed by R. KALSI	2148 01/06/2007	Original Signed by J. BROWNE	04/06/2007	
								Original Signed by	R.P.E.O. No.	DATE	PRODUCTION / NETWORK DELEGATE	DATE



PROJECT
LEAKAGE & PRESSURE MANAGEMENT PROGRAM

TITLE
GENERAL ARRANGEMENT FLOW METER FACILITY

SHEET No.	2 OF 4
BRISBANE WATER DRAWING No.	486/4/25-0005-002
AMEND.	E