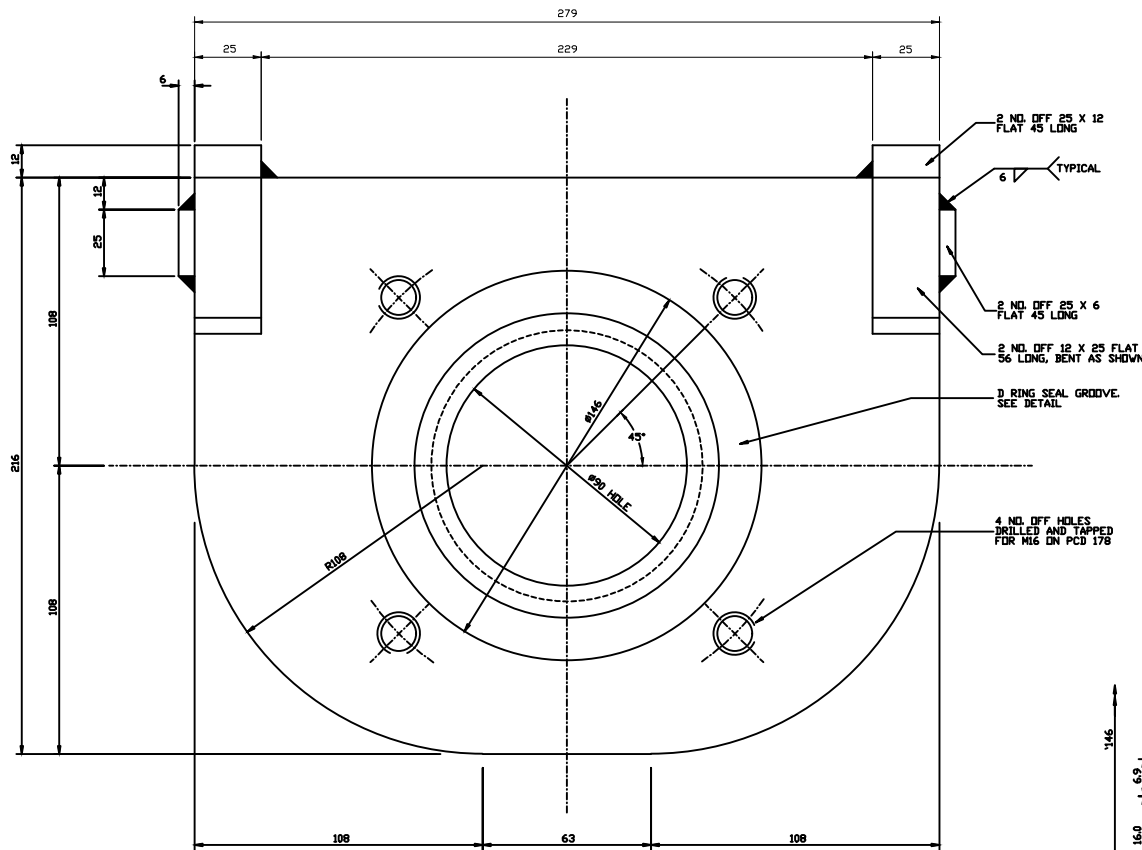
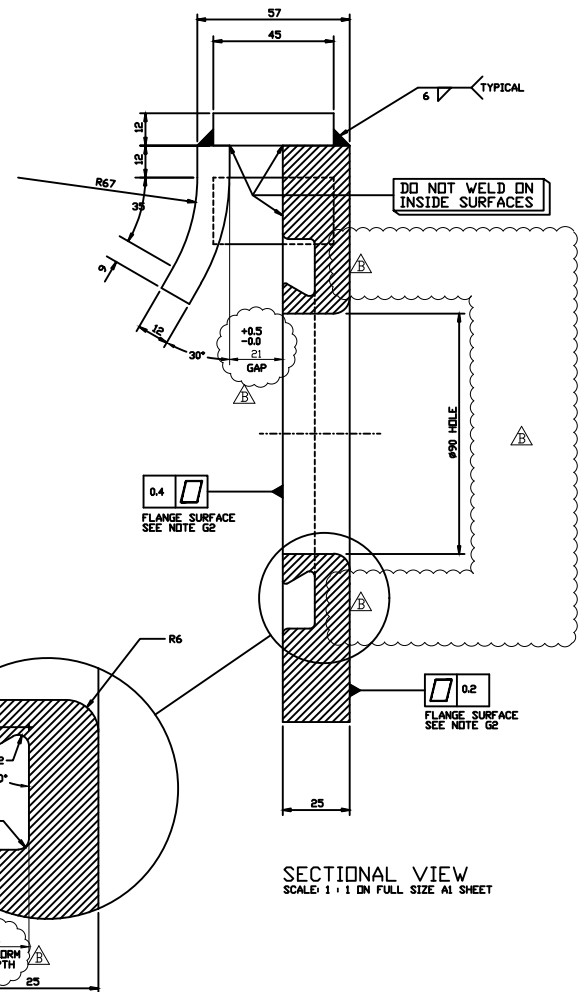


- NOTES:**
- GENERAL
- G1. ALL DIMENSIONS ARE IN MILLIMETRES.
  - G2. IF FLANGE FACES OF QUICK COUPLING ARE NOT SUITABLE FOR GASKET SEALING AFTER FABRICATION THEN THE SURFACES ARE TO BE MACHINED FLAT.
  - G3. ALL MACHINED SURFACES TO BE  $\frac{3.2}{\sqrt{A}}$
- GALVANISING
- G4.1. HOT DIPPED GALVANISING IS TO COMPLY WITH AS 4680.
  - G4.2. THE AVERAGE COATING MASS MINIMUM SHALL BE 600 g/m<sup>2</sup>. THE AVERAGE COATING THICKNESS MINIMUM SHALL BE 85  $\mu$ m.
  - G4.3. UNCOATED STEEL AREAS ARE NOT PERMITTED.



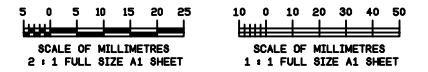
FRONT VIEW  
SCALE: 1 : 1 DN FULL SIZE A1 SHEET



SECTIONAL VIEW  
SCALE: 1 : 1 DN FULL SIZE A1 SHEET

SCALE 2 : 1 DN FULL SIZE A1 DRAWING SHEET

MATERIAL: MILD STEEL HOT DIPPED GALVANISED AFTER FABRICATION



NO.	DATE	AMENDMENT	DRAFTED	APPROVED
B	2/6/09	REVISED PRESSURE GROOVES & HOLE POSITIONS	S.T.H.	
A	2/12/08	UPDATED TO QJU REQUIREMENTS	I.G.B.	

ORIGINAL SIGNED I. G. BRUMBY	19/2/09	DESIGN	R.P.E.Q. No.	DATE
ORIGINAL SIGNED C. J. EATON	6/11/09	DESIGN CHECK	R.P.E.Q. No.	DATE

ORIGINAL SIGNED K. VAHEESAN	24/2/09	MANAGER ENGINEERING SERVICES	DATE
ORIGINAL SIGNED A. KRUMINS	23/2/09	MANAGER INFRASTRUCTURE PLANNING & SERVICES	DATE



PROJECT: STANDARD DRAWING SUBMERSIBLE PUMP SEWERAGE PUMPING STATION

TITLE: CHAIN SUSPENDED SUBMERSIBLE PUMP DN100 HOSE CONNECTION BEND QUICK COUPLING DETAILS

SHEET No. OF SHEETS	486/5/25-0003-315
AVEND.	B