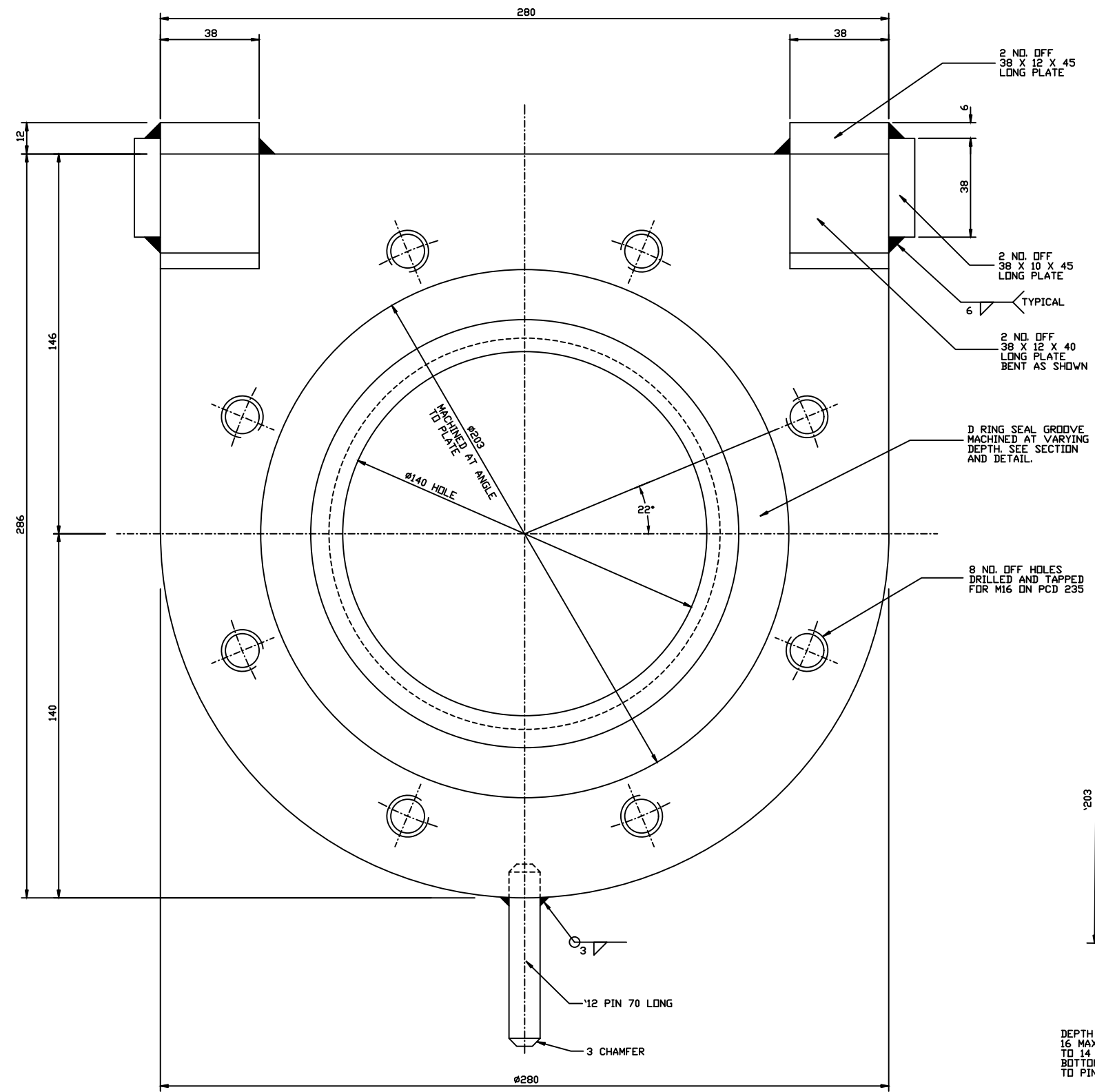
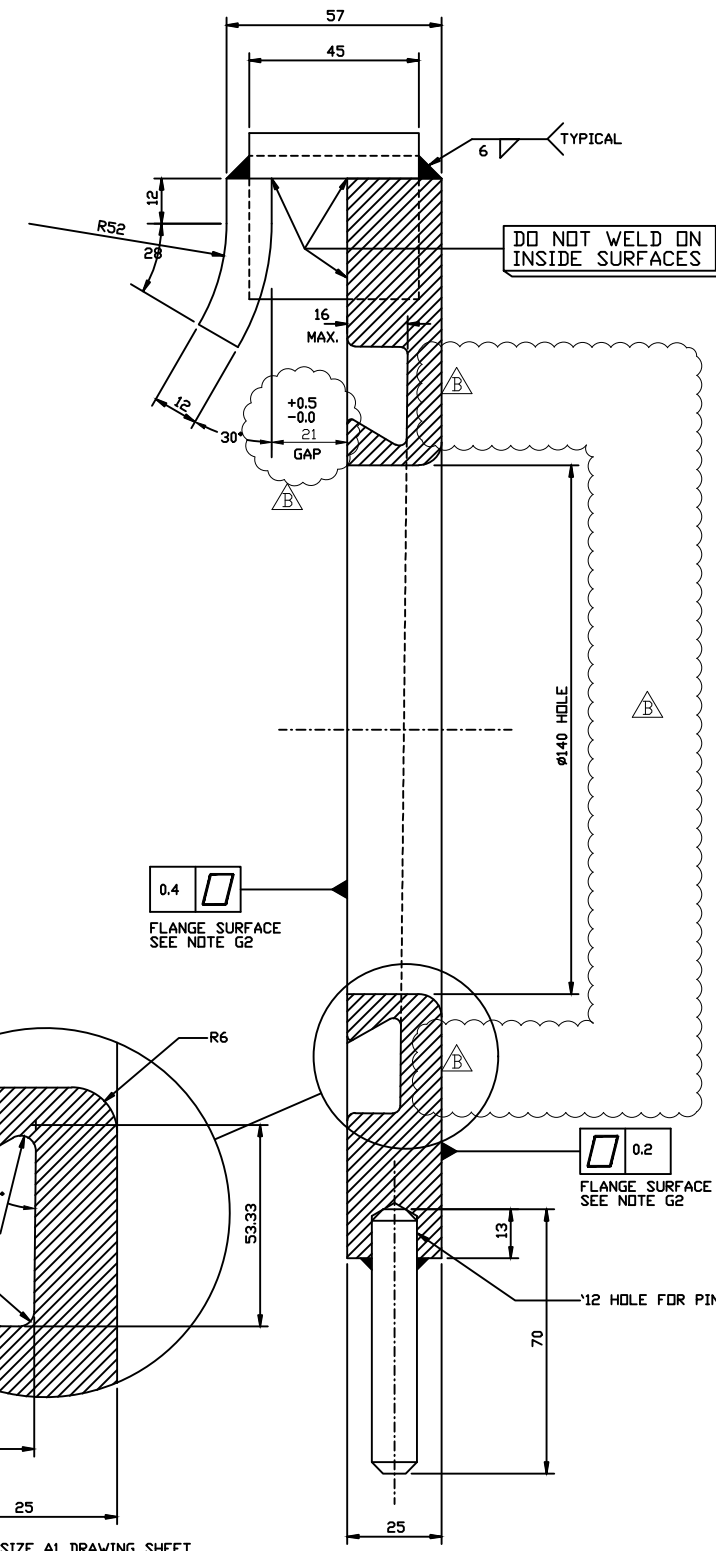


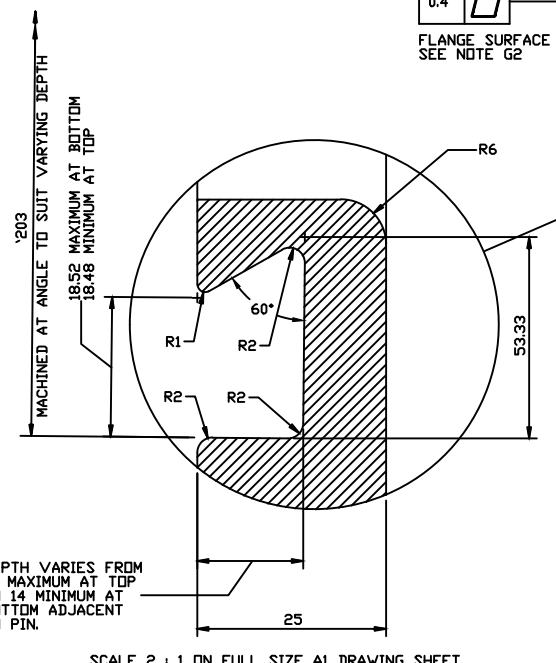
NOTES:
 GENERAL
 G1. ALL DIMENSIONS ARE IN MILLIMETRES.
 G2. IF FLANGE FACES OF QUICK COUPLING ARE NOT SUITABLE FOR GASKET SEALING AFTER FABRICATION THEN THE SURFACES ARE TO BE MACHINED FLAT.
 G3. ALL MACHINED SURFACES TO BE $3.2 \sqrt{\text{ }}$
 GALVANISING
 GA1. HOT DIPPED GALVANISING IS TO COMPLY WITH AS 4680.
 GA2. THE AVERAGE COATING MASS MINIMUM SHALL BE 600 g/m²
 THE AVERAGE COATING THICKNESS MINIMUM SHALL BE 85 μ m.
 GA3. UNCOATED STEEL AREAS ARE NOT PERMITTED.



FRONT VIEW
 SCALE: 1 : 1 ON FULL SIZE A1 SHEET

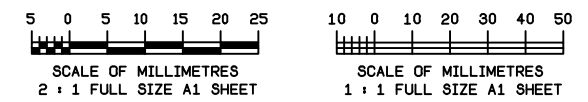


SECTIONAL VIEW
 SCALE: 1 : 1 ON FULL SIZE A1 SHEET



SCALE 2 : 1 ON FULL SIZE A1 DRAWING SHEET

MATERIAL: MILD STEEL HOT DIPPED GALVANISED AFTER FABRICATION



NO.	DATE	AMENDMENT	DRAFTED	APPROVED
B	2/6/20	REMOVED PRESSURE GROOVES & MODIFY DIMENSION	S.T.H.	
A	2/12/18	UPDATED TO QUJ REQUIREMENTS	I.G.B.	C.J.E.

THIS DRAWING SETS OUT THE GENERAL REQUIREMENTS FOR A STANDARD SEWERAGE PUMPING STATION. THE PROJECT SPECIFIC DESIGNING ENGINEER IS RESPONSIBLE FOR ENSURING ALL LEGISLATION AND OBLIGATIONS ARE FOLLOWED AND THE DESIGN MEETS THE FUNCTIONAL REQUIREMENTS SET OUT BY QUEENSLAND URBAN UTILITIES. ANY VARIATIONS FROM THE REQUIREMENTS SHOWN ON THIS DRAWING WILL REQUIRE QUEENSLAND URBAN UTILITIES APPROVAL.

ORIGINAL SIGNED I. G. BRUMBY	19/2/09	DESIGN	R.P.E.Q. No.	DATE
ORIGINAL SIGNED C. J. EATON	6511 23/2/09	DESIGN CHECK	R.P.E.Q. No.	DATE

ORIGINAL SIGNED K. VAHEESAN	24/2/09	MANAGER ENGINEERING SERVICES	DATE
ORIGINAL SIGNED A. KRUMINS	23/2/09	MANAGER INFRASTRUCTURE PLANNING & SERVICES	DATE



PROJECT STANDARD DRAWING
 SUBMERSIBLE SEWERAGE PUMPING STATION

TITLE CHAIN SUSPENDED SUBMERSIBLE PUMP DN150 HOSE CONNECTION BEND QUICK COUPLING DETAILS

SHEET No.	OF	SHEETS
486/5/25-0003-316		
AMEND.		
B		