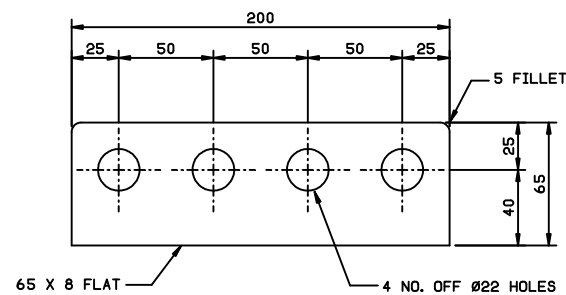
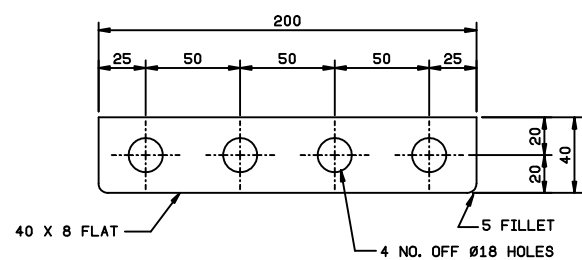


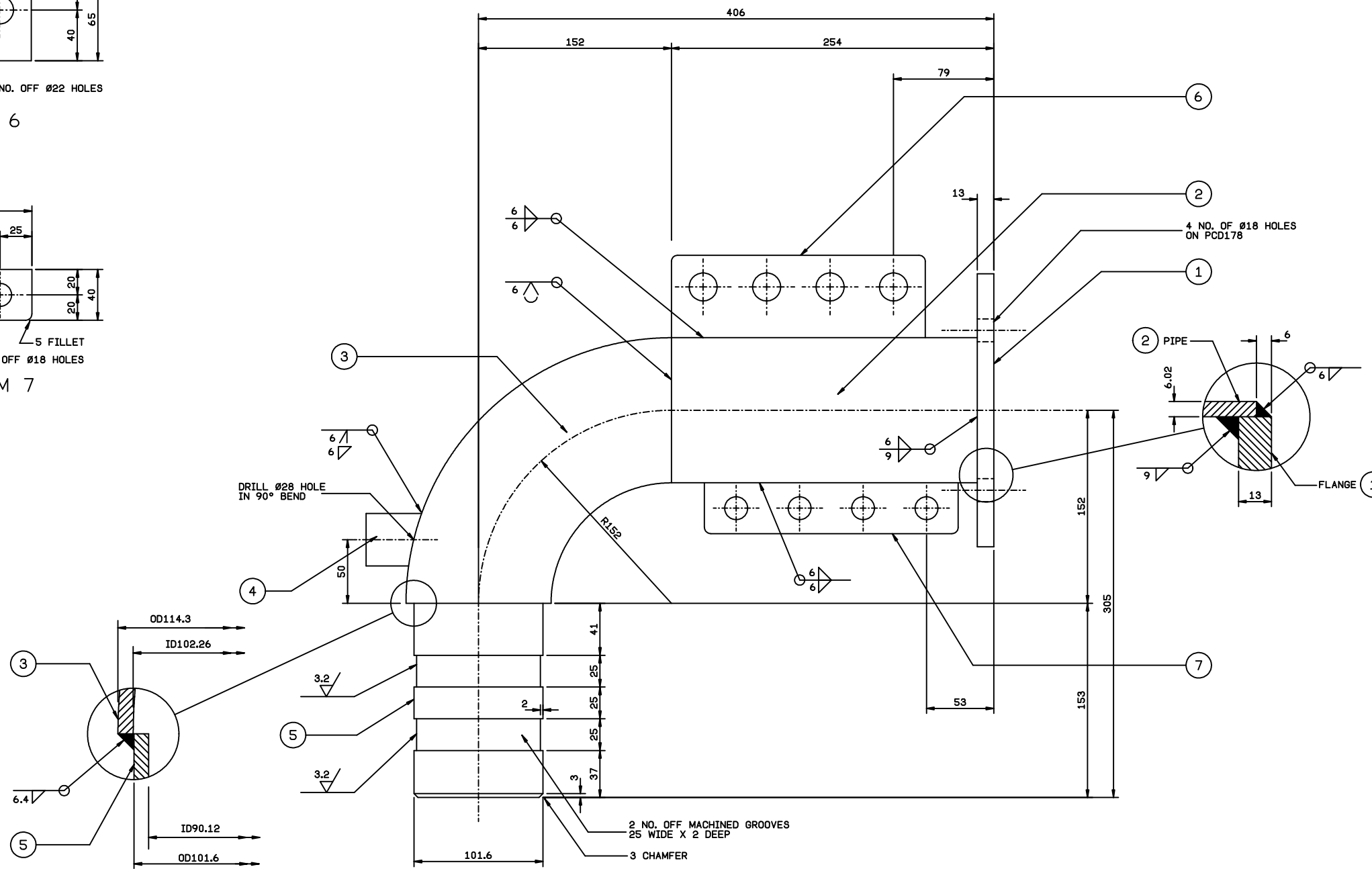
NOTES:
 GENERAL
 G1. ALL DIMENSIONS ARE IN MILLIMETRES.
 GALVANISING
 GA1. HOT DIPPED GALVANISING IS TO COMPLY WITH AS 4680.
 GA2. THE AVERAGE COATING MASS MINIMUM SHALL BE 600 g/m². THE AVERAGE COATING THICKNESS MINIMUM SHALL BE 85 µm.
 GA3. UNCOATED STEEL AREAS ARE NOT PERMITTED.



TOP HANGER ITEM 6
 1 NO. OFF REQUIRED



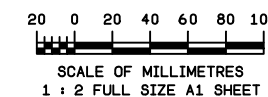
BOTTOM HANGER ITEM 7
 1 NO. OFF REQUIRED



DN100 HOSE CONNECTION BEND
 SCALE 1 : 2 ON FULL SIZE A1 DRAWING SHEET
 MATERIAL: MILD STEEL HOT DIPPED GALVANISED AFTER FABRICATION

MATERIAL LIST

ITEM NO.	DESCRIPTION
1	DN100 FLANGE TO AS4087 PN16 FIGURE B7 4 NO. OFF Ø18 HOLES ON PCD178 FLANGE OD215
2	DN100 SCHEDULE 40 PIPE OD114.30 WALL THICKNESS 6.02 ID102.26
3	DN100 90° LONG RADIUS BUTT WELDED BEND SCHEDULE 40 OD114.30 WALL THICKNESS 6.02 ID102.26
4	DN25 BSP THREADED SOCKET MACHINED FROM SOLID STEEL
5	DN90 SCHEDULE 40 PIPE MACHINED AS SHOWN OD101.60 WALL THICKNESS 5.74 ID90.12
6	TOP HANGER BRACKET 65 X 8 FLAT SEE DETAIL
7	BOTTOM HANGER BRACKET 40 X 80 FLAT SEE DETAIL



THIS DRAWING SETS OUT THE GENERAL REQUIREMENTS FOR A STANDARD SEWERAGE PUMPING STATION. THE PROJECT SPECIFIC DESIGNING ENGINEER IS RESPONSIBLE FOR ENSURING ALL LEGISLATION AND DELEGATIONS ARE FOLLOWED AND THE DESIGN MEETS THE FUNCTIONAL REQUIREMENTS SET OUT BY QUEENSLAND URBAN UTILITIES. ANY VARIATIONS FROM THE REQUIREMENTS SHOWN ON THIS DRAWING WILL REQUIRE QUEENSLAND URBAN UTILITIES APPROVAL.

ORIGINAL SIGNED I. G. BRUMBY 19/2/09
 DESIGN RPEQ No. DATE
 ORIGINAL SIGNED C. J. EATON 6511 23/2/09
 DESIGN CHECK RPEQ No. DATE

ORIGINAL SIGNED K. VAHEESAN 24/2/09
 MANAGER ENGINEERING SERVICES DATE
 ORIGINAL SIGNED A. KRUMINS 23/2/09
 MANAGER INFRASTRUCTURE PLANNING & SERVICES DATE



PROJECT STANDARD DRAWING
 SUBMERSIBLE PUMP
 SEWERAGE PUMPING STATION

TITLE
 CHAIN SUSPENDED
 SUBMERSIBLE PUMP
 DN100 HOSE CONNECTION BEND
 DETAILS

SHEET No. OF SHEETS
 QUEENSLAND URBAN UTILITIES DWG No. AMEND.
 486/5/25-0003-317 A

DATE: 15FEB11
 TIME: 13:35:56
 FILE: 5250003317*9ORDER