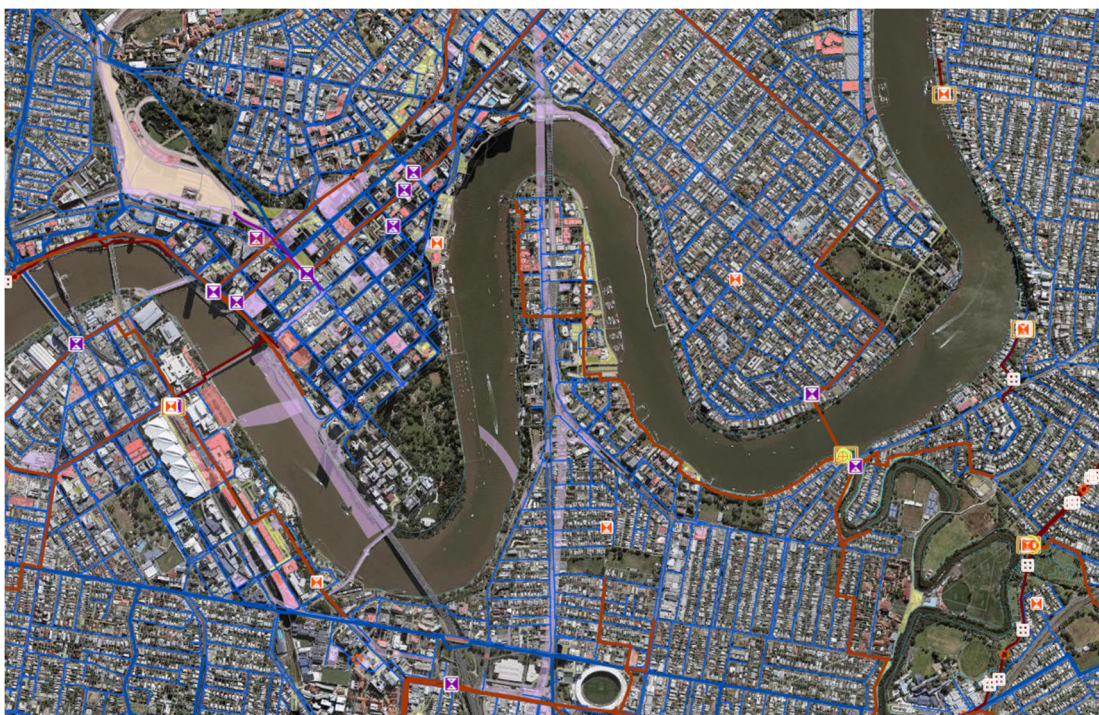


# USER GUIDE

## Geographical Information System (GIS) Open Data App



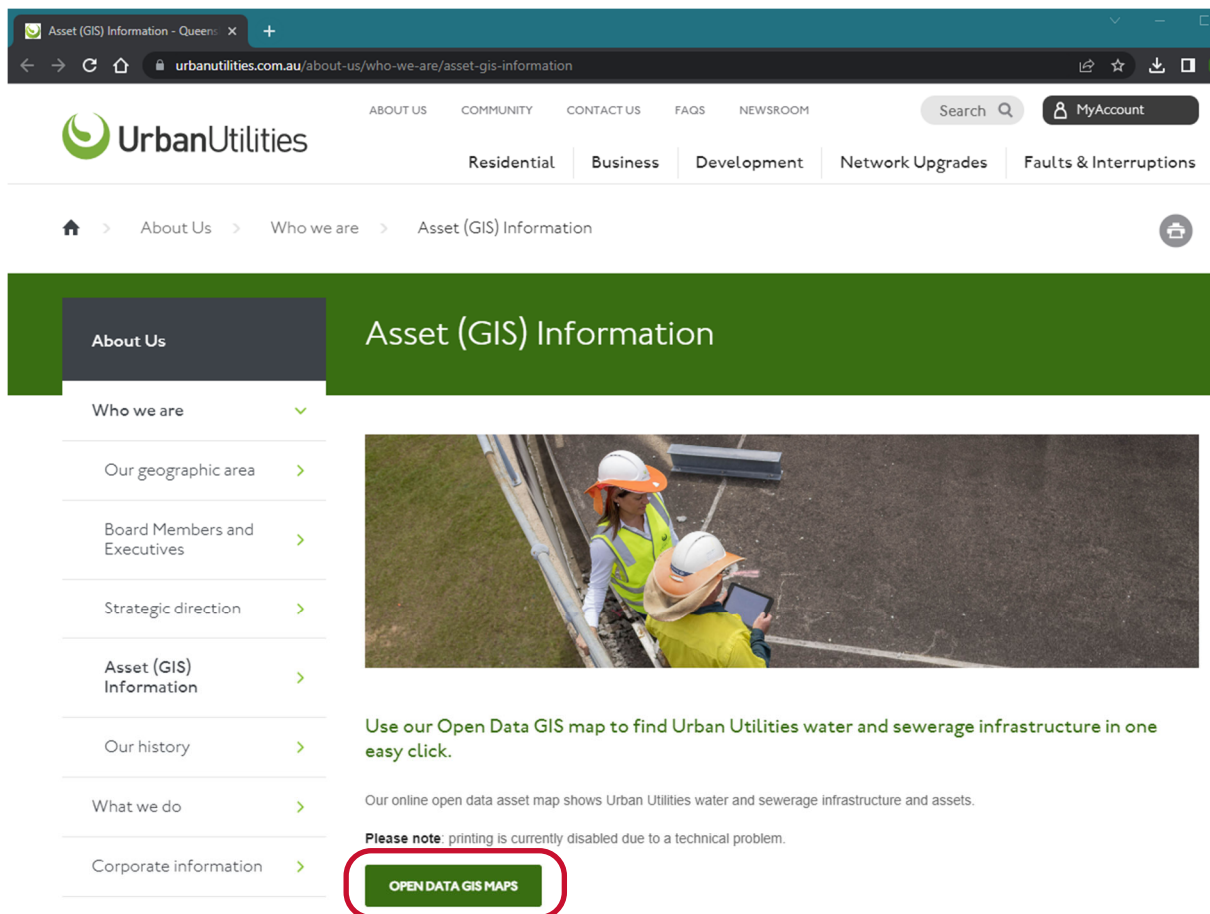
### Contents

Accessing GIS Open Maps .....	2
Property Search .....	3
Map Legend .....	5
Layer List .....	5
Asset Information .....	6
Basemap Gallery .....	8
Measurement Tool .....	9

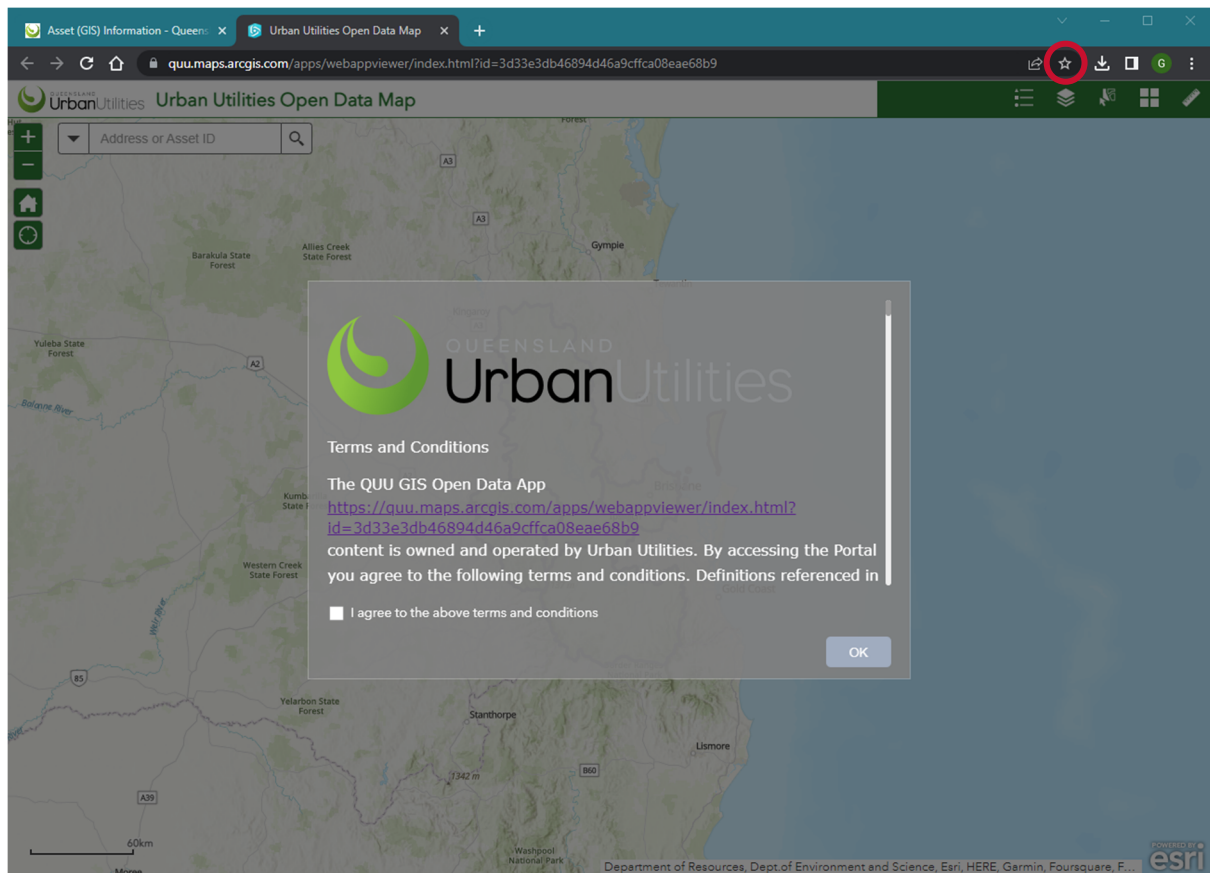
## Accessing GIS Open Maps

To access Urban Utilities' **GIS Open Data App**

- go to the Urban Utilities Asset (GIS) Information webpage (via the following link)  
<https://urbanutilities.com.au/about-us/who-we-are/asset-gis-information>
- click on the **OPEN GIS MAPS** button.



- Agree to the terms and conditions and click OK.

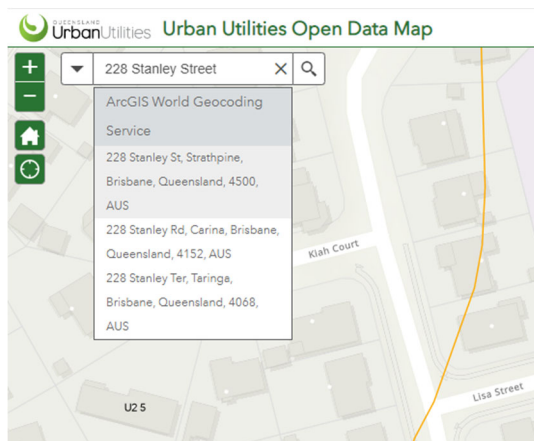


- *Note that this webpage can be booked marked in your browser for future access.*

## Property Search

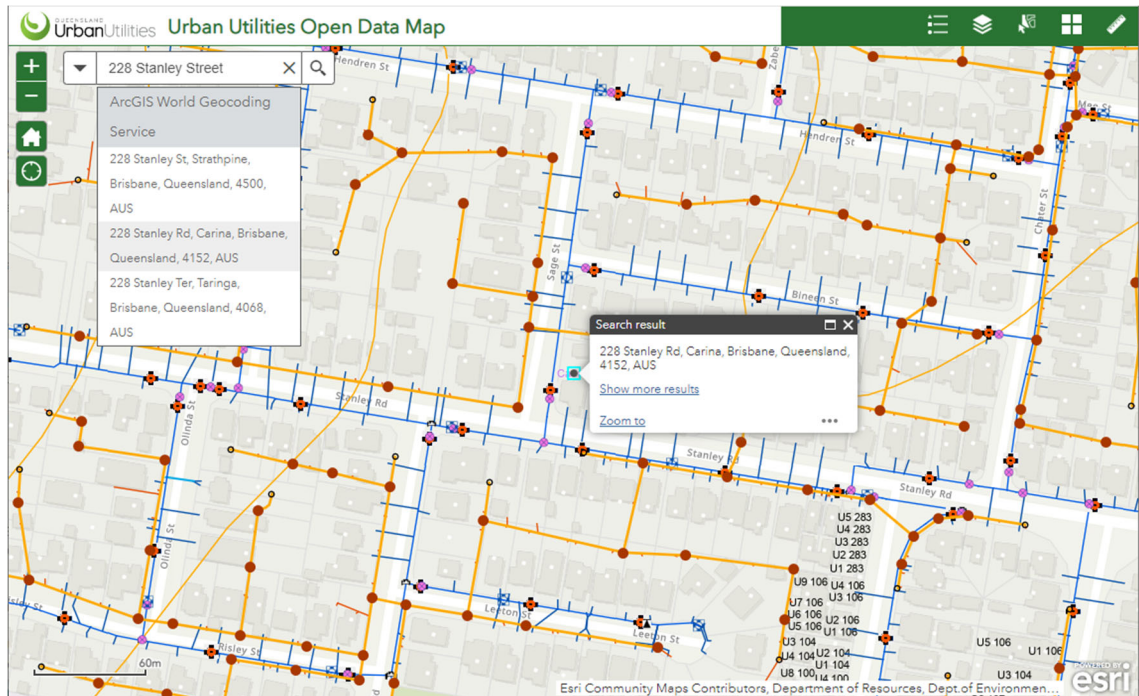
To select a property, enter the street address in the search box.

- *Note that available properties will be displayed.*

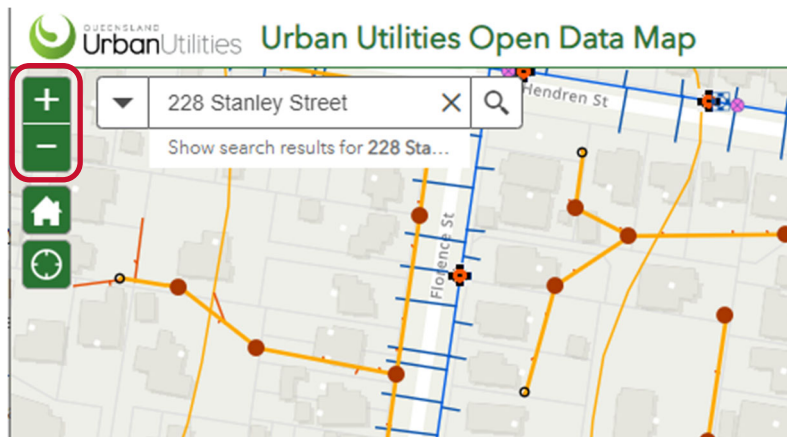


- Select from available dropdown, and the selected property will be displayed.





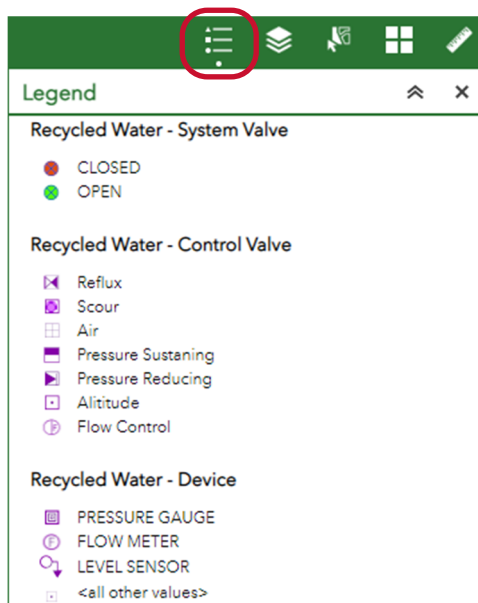
- To view a larger area around the selected property, either use the zoom buttons or the scroll button on your mouse (in or out).



- To pan the displayed map area, with the mouse cursor located over the displayed map area, press and hold the left mouse button and drag.

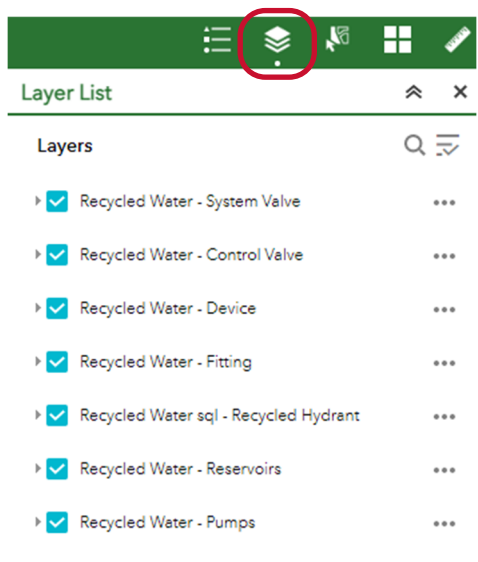
## Map Legend

The map legend of symbology used in the **GIS Open Data App** can be accessed via the Legend icon.



## Layer List

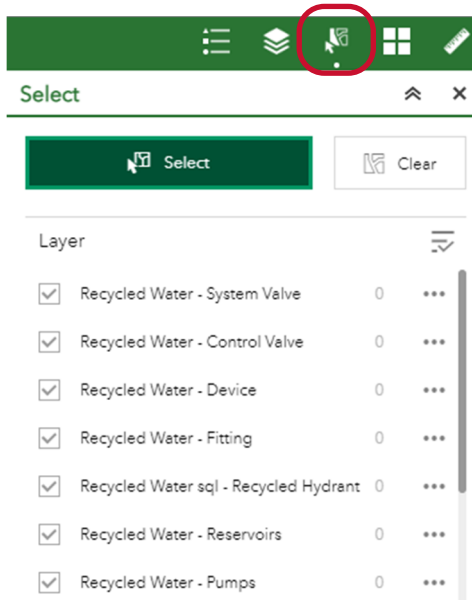
The list of layers which are displayed in the **GIS Open Data App** can be turned on or off in the layer list.



- *Note that if the Aerial Imagery layer is turned on, the imagery will not be displayed if the displayed map area is zoomed in too far (e.g., zoom out to display the Aerial Imagery).*

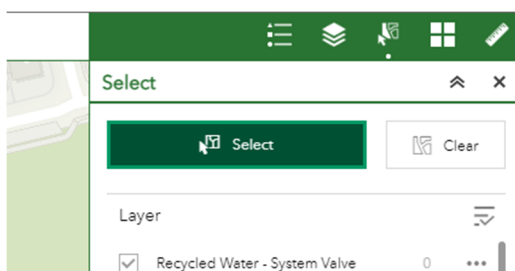
## Asset Information

To view the available asset details, click the Select icon which will display the selected layer list.

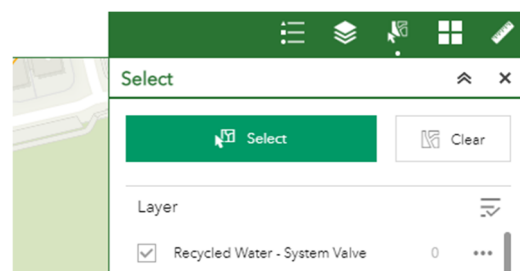


- *Note: to turn the select function on or off, click the select button. The select function will need to be off if you need to move around the map.*

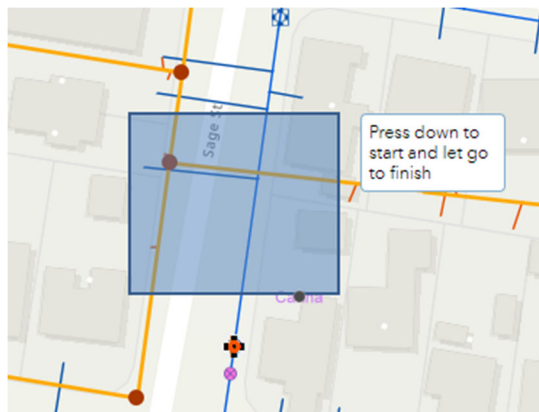
### Select turned on



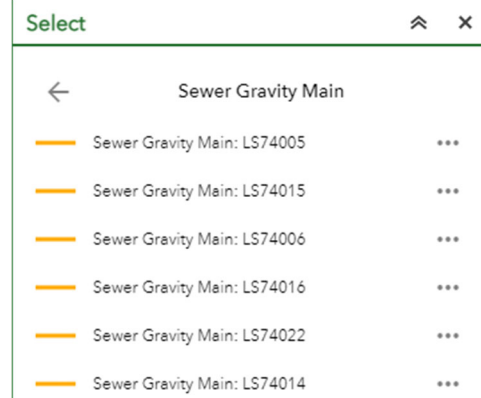
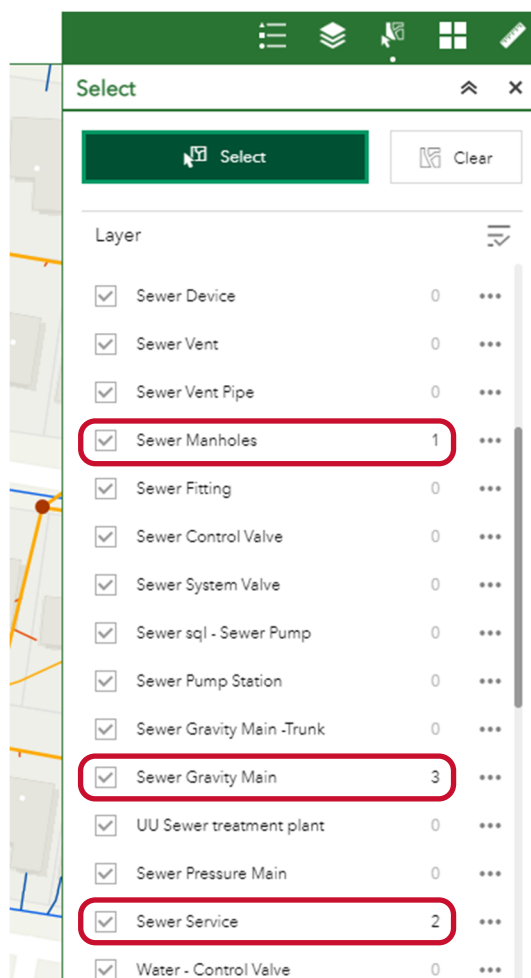
### Select turned off



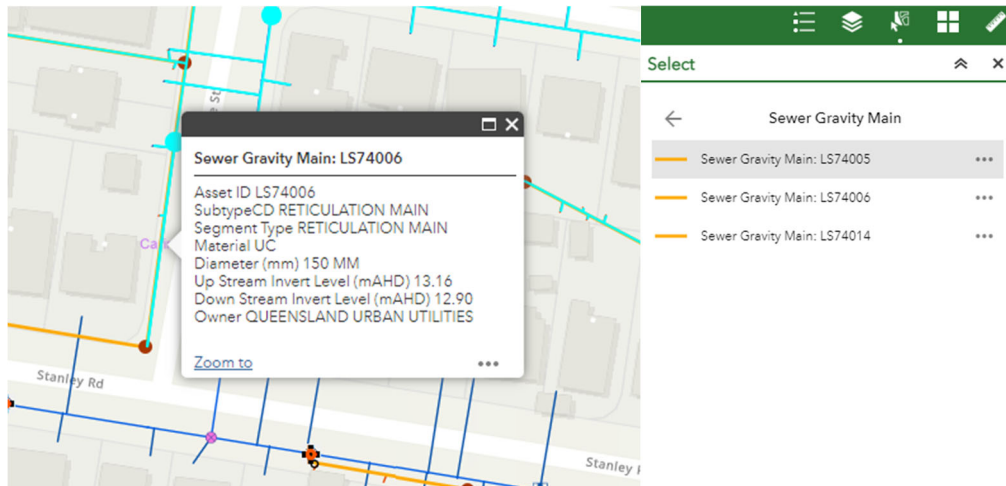
- With the selection function turned on, drag a box over the required assets.
- *Note that in this example, the following assets have been selected.*
  - 2 sewer mains
  - 1 sewer manhole
  - 1 sewer service
  - 2 water services
  - 3 cadastral parcels (2 properties and 1 road corridor section)



- The search layer list will identify the assets which have been selected indicating the number of each type of asset.
- Scroll down to see which asset types have been selected, i.e., those with more than zero.

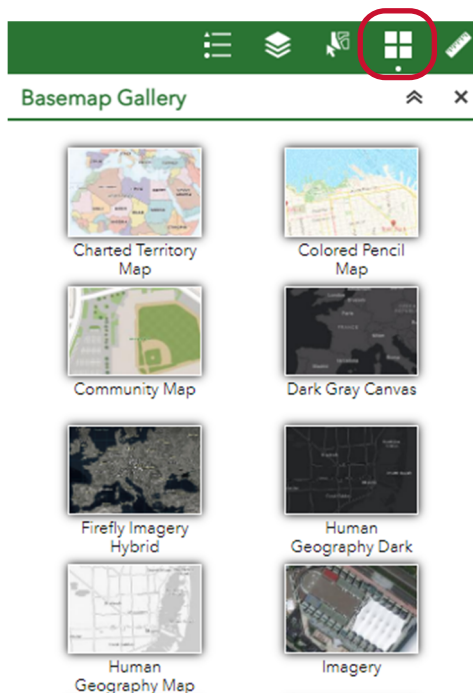


- Click on the layer type to display which assets have been selected.
- *Note: selected Sewer Gravity Mains shown in this example.*
- Click on one of the selected assets.
  - The map area will pan to the selected asset, and
  - Display the asset details currently available to be viewed.



## Basemap Gallery

Different basemap imagery or overlay can be selected in the Basemap Gallery.

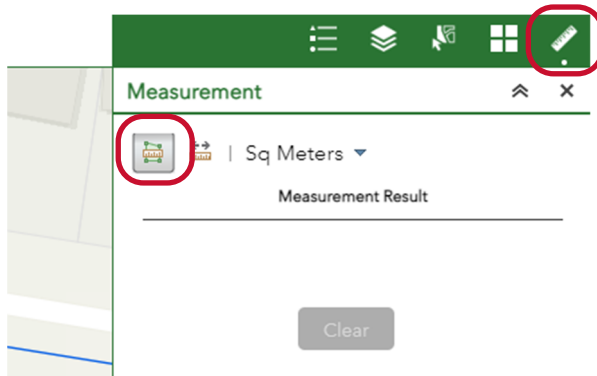




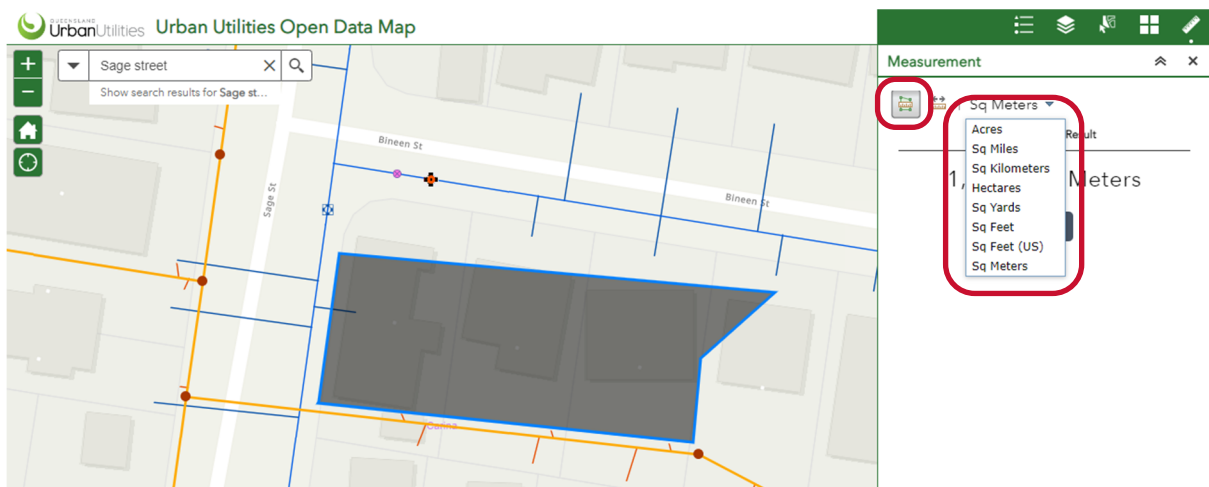
## Measurement Tool

The Measurement tool can be used to measure an area or distance.

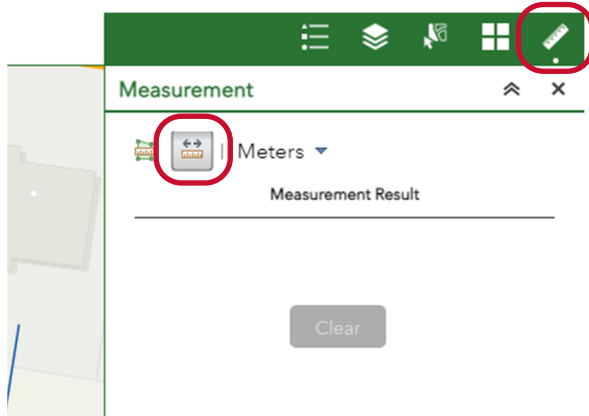
- To measure an area, select the area measurement icon and click on the map area to start the area polygon.



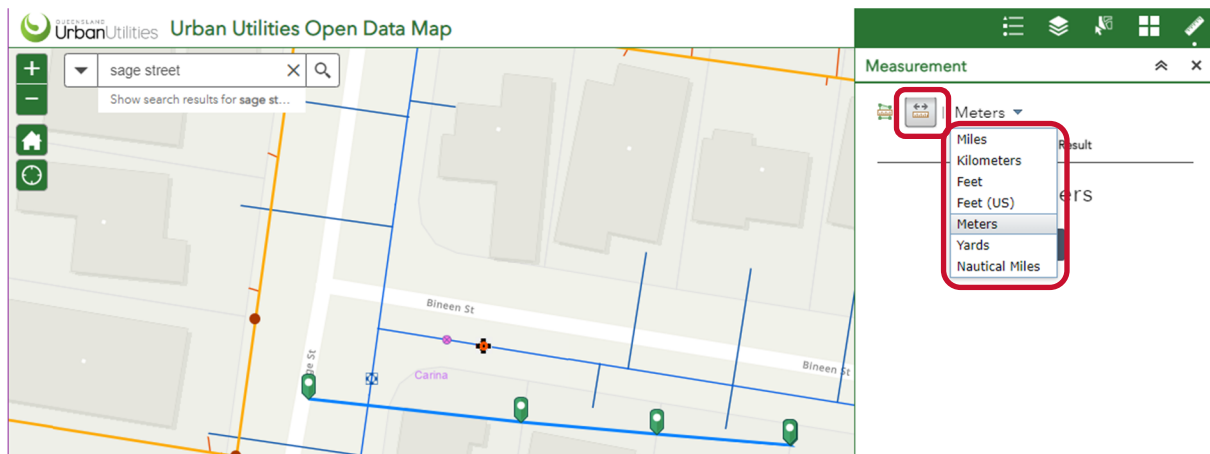
- Click the at the desired boundary points, and double click to finish.
- Note that the unit of measurement can be selected or changed via the dropdown as required.*



- To measure a distance, select the distance measurement icon and click on the map area to start the distance measurement.



- Click each of the desired points, and double click to finish.
- Note that the unit of measurement can be selected or changed via the dropdown as required.*



More specific infrastructure/network data may be available through the Engineering Search services as detailed on our Research my land webpage at

<https://urbanutilities.com.au/development/our-services/research-my-land>

General Enquiries **13 26 57**  
 Faults and Emergencies **13 23 64**  
[urbanutilities.com.au](https://urbanutilities.com.au)

ABN 86 673 835 011