

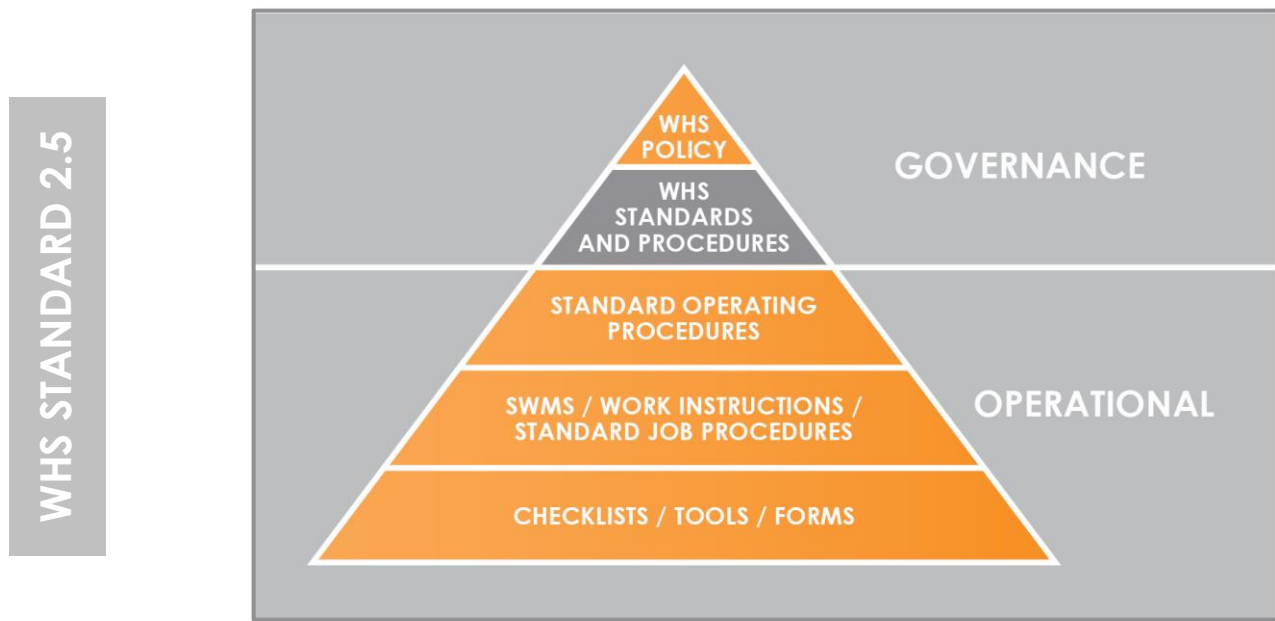
# WHS STANDARDS

SAFETY Everyone. Everywhere. Every day.

## WHS HAZARD AND RISK MANAGEMENT

DOC ID	STD136	VERSION	3	DOC OWNER	Dave Cowan
ACTIVE DATE	16/02/2018	REVIEW DATE	16/02/2020		

### 1. WHSMS DOCUMENT HIERARCHY



### 2. GOAL

All work health and safety (WHS) hazards are proactively identified and eliminated wherever possible. Where elimination is not possible, risks will be promptly assessed and managed in accordance with Queensland Urban Utilities (QUU) integrated risk management and compliance framework to minimise health and safety risks so far as is reasonably practicable.

### 3. PERFORMANCE REQUIREMENTS

1. WHS hazard and risk management is applied throughout all activities that QUU control, undertake or influence.
2. Hazard and risk identification, assessment and control are an integral part of QUU business operations, including change management and procurement processes.
3. All staff and contractors promptly identify and report hazards and are actively engaged in the selection, design and implementation of corrective actions to eliminate and/or minimise risks to health and safety.
4. Hazard and risk registers are established and maintained across all levels of the business in accordance with QUU's WHS Audit, Risk and Consultation Framework (see Figure 1).
5. WHS risks are analysed, prioritised and treated in accordance with QUU's integrated risk management framework, WHS standards and legislation.

6. WHS risks are evaluated and monitored with regular reviews undertaken to continually assess, evaluate and improve both WHS controls and performance.

#### 4. WHS BENEFITS

- Staff and contractors actively identify and eliminate or mitigate hazards and associated WHS risks so far as is reasonably practicable.
- Prompt identification and control of hazards and associated WHS risks is an integral part of QUU's business activities.
- Prevention of incidents, dangerous occurrences and work related injuries and illnesses.
- Proactive management and control of WHS risks protects people, property and the environment, reduces human, financial and legal costs and impacts and drives business efficiency.
- Continual monitoring and improvement of WHS controls.

#### 5. RESPONSIBILITIES AND ACCOUNTABILITIES

Officers, Managers and Workers have clear responsibilities and accountabilities for WHS outlined in QUU's **WHS Resources, Responsibility and Accountability Procedure (PRO359)**. These responsibilities and accountabilities are non-transferrable and critical to achieving QUU's WHSMS goals, objectives and targets.

In accordance with **WHS Hazard and Risk Management Procedure (PRO363)**, responsibilities and requirements for WHS hazard and risk management will be established, integrated into business management and monitored for the purposes of:

- meeting legal and other obligations
- preventing workplace injury or illness
- promoting staff health and wellbeing
- enabling business capability
- ensuring continual improvement and high standards of WHS throughout QUU.

#### 6. RELATED INTERNAL DOCUMENTS

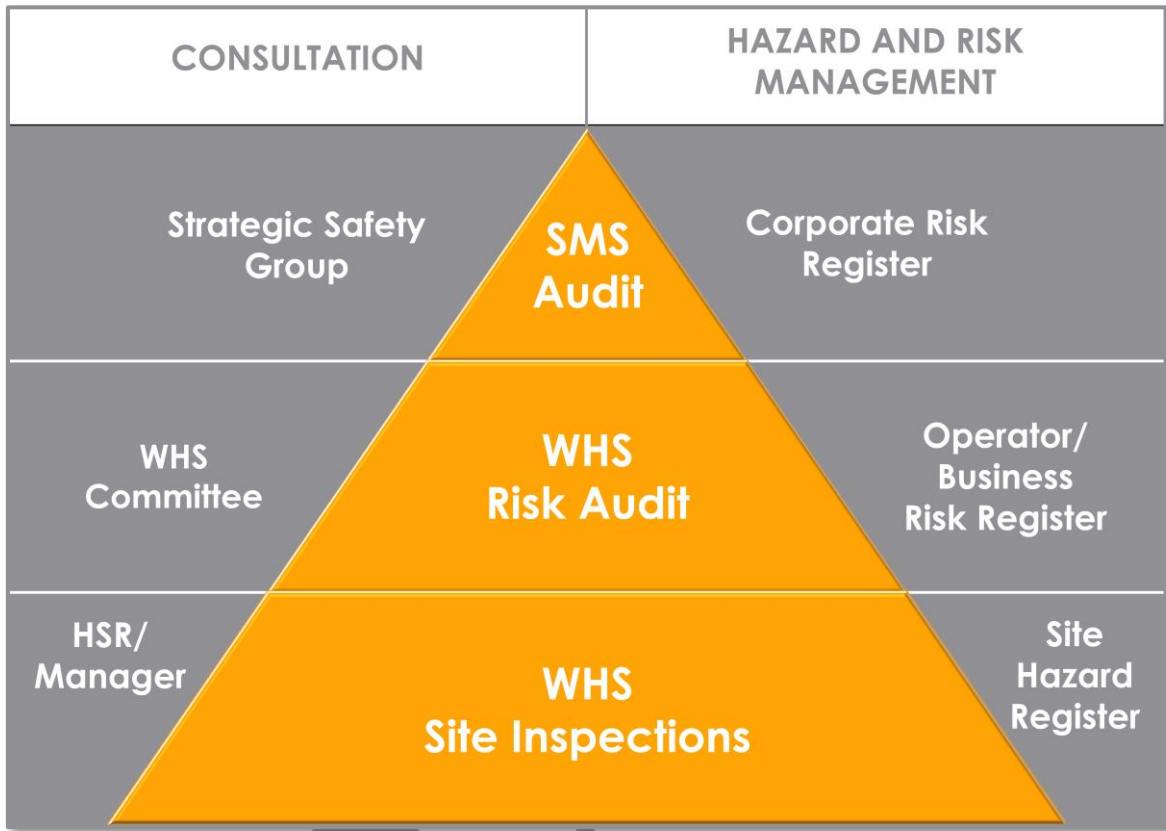
- QUU Work Health and Safety Policy (POL33)
- Risk Management and Compliance Policy (POL11)
- WHS Resources, Responsibility and Accountability Standard (STD132)
- WHS Resources, Responsibility and Accountability Procedure (PRO359)
- QUU Risk Management Standard (STD119)
- WHS Hazard and Risk Management Procedure (PRO363)

#### 7. REFERENCES

- QLD Work Health and Safety Act 2011
- QLD Work Health and Safety Regulation 2011
- QLD How to Manage Work Health and Safety Risks Code of Practice 2011
- AS/NZS 4801:2001 Occupational Health and Safety Management Systems – Specification with guidance for use
- & OHSAS 18001:2007 *Occupational Health and Safety Management Systems. Requirements.*
- AS/NZS ISO 31000:2009 Risk Management – Principles and guidelines

## 8. ATTACHMENTS

**Figure 1:** WHS Audit, Risk and Consultation Framework



DR