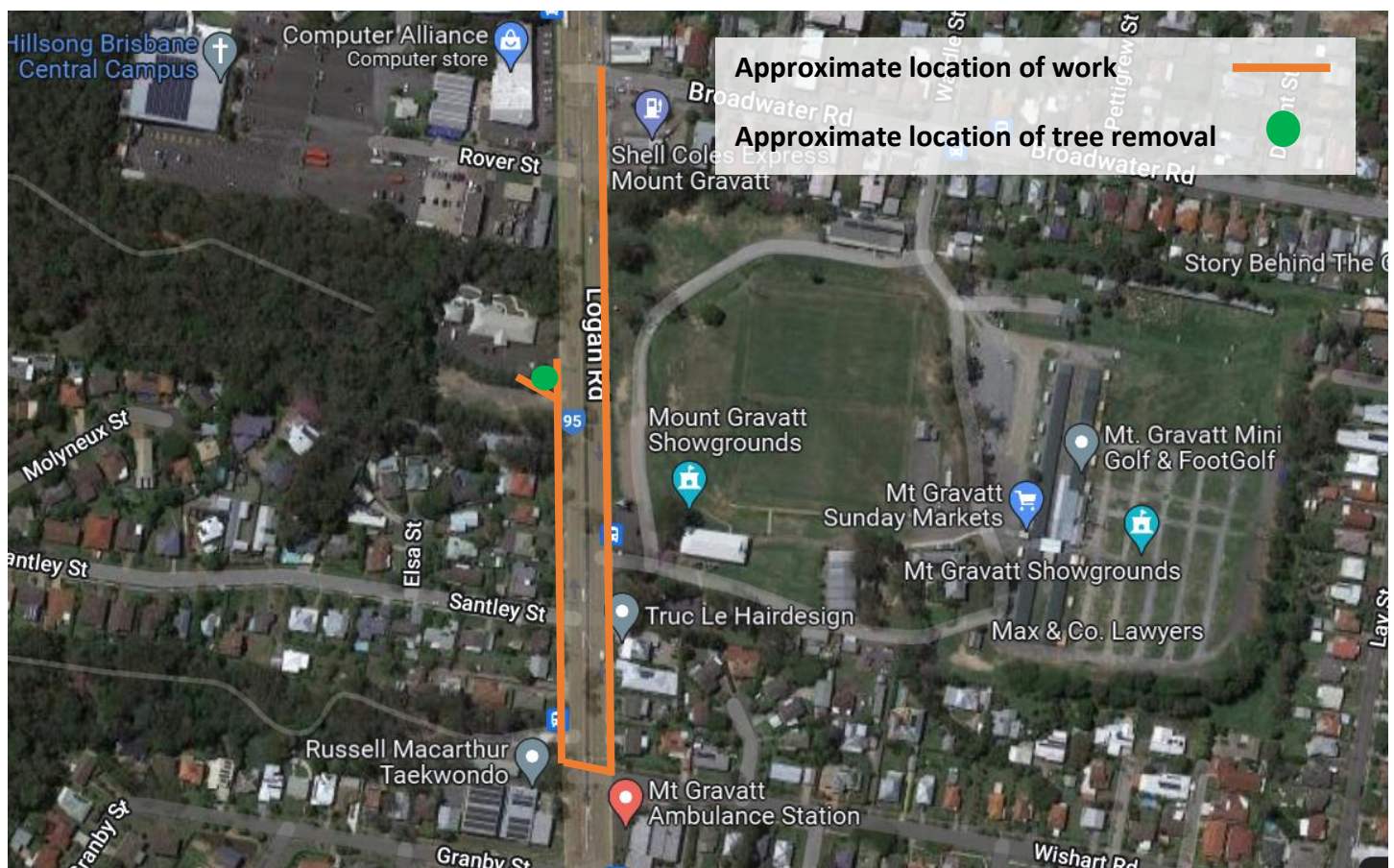


WE'RE UPGRADING YOUR WATER NETWORK

YOU CAN RELY ON US TO KEEP THINGS FLOWING, AND FROM TIME TO TIME WE NEED TO UPGRADE YOUR LOCAL WATER NETWORK.

Our delivery partner, Downer WSP, will soon start work on replacing sections of water pipes along both sides of Logan Road between Broadwater Road, Wishart Road and Granby Street, Mount Gravatt. These upgrades will ensure long-term water service delivery to the local community and cater for the growing population and future development in the area.

Project map - approximate location of works



About the project

We are upgrading sections of pipe near your property which are made from asbestos cement, the new pipes will be longer lasting. These upgrades will ensure reliability and sustainability of water services in your area.

Project delivery

Construction will occur intermittently from **Tuesday 3 May 2022**, weather and site conditions permitting. We will provide you with construction updates as the works progress.

Works will commence between Broadwater Road and Wishart Road, moving across the road gradually between Rover Street and Granby Street (refer to map over the page).

Work hours

We'll be working during the day between **6:00pm and 6:00am, Sunday to Thursday**. In some situations, we may need to carry out works during the day between **6:00am and 6:00pm**, and the occasional Friday or Saturday. We will notify you before any work takes place.

What to expect

During construction, nearby residents and businesses may experience increased vehicle movements in the area, noise and dust from heavy machinery and minor vibration.

Changed traffic conditions and footpath diversions will be in place around work areas. This will include temporary road closures / restrictions to Broadwater Road, and we will notify you in advance. We will use traffic control measures to manage the flow of traffic, ensure pedestrian safety and maintain local access.

Please take care and observe all signs, speed limits and any directions given by traffic controllers. Safety fencing, barriers and signage will be installed around work areas to keep everyone safe.

When any water service interruptions are needed, we'll provide at least three days' notice to affected residents and businesses before these occur. Keep a look out in your letterbox for these updates.

Bypass (temporary water service)

Your property may be connected to a temporary water service pipe to maintain your water supply. While we connect and disconnect you to the temporary bypass you will experience **water loss for up to 15 minutes**. Our crew will door knock all residents and businesses prior to connecting your property service. The temporary pipe is usually laid across driveways, a crossing ramp will be used to maintain safe vehicle access and protect the pipe. Please cross the ramp at a slow speed without stopping to avoid damaging it. This is the same quality of drinking water as your normal service; however, you may notice a slight reduction in water pressure.

Tree and vegetation removal

We understand local parks and resident fauna and flora are highly valued by the community.

To allow for these essential works, there will be minimal tree and vegetation removal along the new water pipe alignment and within work sites.

We have gone through an extensive process of design and approvals to ensure, where possible, we are minimising the number of trees that are required to be removed.

Any trees marked for removal will be done so in accordance with Brisbane City Council and Queensland Government requirements. Activities will be monitored and approved by a qualified arborist and a fauna spotter.

Our commitment

We'll minimise construction impacts to the extent possible, including managing noise and dust at the source, using traffic control, and reviewing work methods as required.

We'll keep the community and directly affected residents and businesses informed by providing monthly construction updates during the project.

To find out more

For more information, or to contact the project team, you can:

Contact **Aleisha Billing** on **0437 841 193** or after hours **1300 992 605**

Email or register for project updates: **Community.Enquiries@downergroup.com**

For Information on asbestos pipes, visit: urbanutilities.com.au/network-upgrades/current-projects/water-main-replacement-works-asbestos-cement-pipes-information-page

Visit the project webpage: urbanutilities.com.au/network-upgrades

or scan the **QR code** to be taken direct to the project update page



Asbestos Removal

Asbestos removal – there are no health risks associated with drinking water that has been transported in asbestos cement pipes. Our licensed asbestos removers will safely remove these pipes by wetting down the asbestos cement before it is removed and disposing of these pipes in a special bin.

Restoration activities

After construction works are complete, we'll restore all work areas as close to the original condition as possible. Landscaping will aim to ensure that above ground infrastructure blends with the existing environment as much as possible.

THANK YOU FOR YOUR PATIENCE WHILE WE COMPLETE THESE ESSENTIAL WORKS.