

# Working beneath the streets

French Street, Eagle Farm

21 July 2021

You can rely on us to keep things flowing, and from time-to-time we need to upgrade your local water and wastewater pipes.

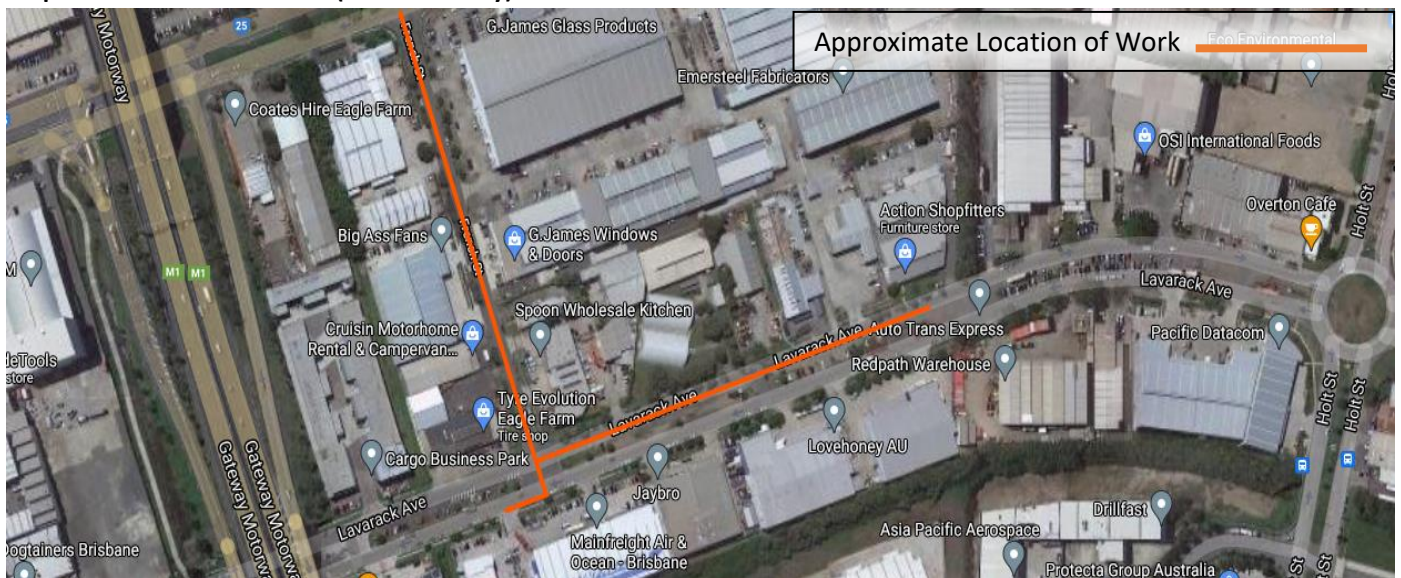
## What is happening?

Our delivery partner, Diona, will soon start work on replacing sections of water pipes along **French Street, Eagle Farm**. We plan to start work the **week commencing Sunday 1 August 2021** and are scheduled to be completed over a **2-month period**. This time frame is indicative only and are subject to weather and site conditions. Work will take place on **French Street, Kingsford Smith Drive and Lavarack Ave, Eagle Farm** (please see below map). Most of our work will take place at night from **6pm to 6am, Sunday to Thursday**.

## Why is this happening?

The pipes are reaching the end of their life cycle. We will soon start replacing sections of old water mains near your property. Upgrades to the network will ensure that we can keep moving the water to your taps. The pipes are within Council land so we will not need to enter your property.

## Map of the construction area (indicative only)



## Parking, traffic, pedestrian access, and public transport

Please observe all site signage and barriers – they are there to keep you and our workers safe.

**Temporary lane/road/pedestrian pathway closures and detours** will be required on **French Street** and **Lavarack Avenue**.

**Bus services** will run as normal, however, please observe all site signage, and traffic controller directions.

**On-street parking** will be limited intermittently in our work areas. Please follow traffic controller direction and signage.

You may experience minor delays while we are working in the area. Traffic control will be in place to assist pedestrians and general traffic.

### Compound area

A compound area will be set up on **Lavarack Avenue**. You may experience increased levels of noise caused by vehicle movements and the use of machinery, as well construction crews and equipment being present at the compound at times. The storage area will be restored as close as reasonably possible when the work is complete.

### Map of the temporary compound area (indicative only)



### Temporary water outages

To replace the pipes, we may need to temporarily disconnect properties while we work to transfer you to the new water main. We will give you at least three days' notice prior to any temporary water outages. Keep a look out in your letterbox for updates.

### Temporary water service

During construction, your property may be connected to a temporary water service pipe to maintain your water supply. This is the same quality of drinking water as your normal service; however, you may notice a slight reduction in water pressure. The temporary pipe is usually laid across driveways, a crossing ramp will be used to maintain safe vehicle access and protect the pipe. Please cross the ramp at slow speed without stopping to avoid damaging it. If you experience any issues with your temporary water service pipe, please call 1300 131 338.

### Noise and dust

We want to acknowledge that the works may have elevated noise and dust levels at times, as we dig down to expose the old pipe and work to lay the new one. We will work to minimise our impacts where possible during our works.

### Restoration

After we have completed installing each section of pipe, we will be restoring all areas impacted by our works including roads, driveways, and footpaths. All standard concrete driveways will be repaired as close as reasonably possible to the pre-existing condition following completion of the work onsite. If your property has a non-standard driveway, e.g., Stencil, pebble, coloured. We will contact you in advance to discuss the restoration.

### Find out more

We will provide further updates as the project progresses, or get in touch:

- Phone 1300 13 13 38
- Email: [UUTeam@diona.com.au](mailto:UUTeam@diona.com.au)
- Visit: [urbanutilities.com.au/wmrp](http://urbanutilities.com.au/wmrp)

Thank you for your patience during this essential work



To go into the draw to win a **\$50 gift voucher**, please scan the QR code to complete a survey at any stage during the project, your feedback is important to us.