

# Hawthorne Park Wet Weather Pump Station Project

The Hawthorne Park wet weather pump station project involves the construction of a pump station and the installation of new sewer pipework within the Hawthorne area. This new infrastructure will help manage wet weather overflows in the area and reduce environmental impacts.

## What is happening from Mid-May?

- Construction of the two new sewer maintenance holes, trenching works and installation of new sewer pipework will continue on Lindsay Street.
- Access to Hawthorne Road from Lindsay Street eastbound remains closed.
- Trenching work to install the new sewer rising main pipework will start from Riding Road and go through to the northern section of Hawthorne Park, Oak Street, Park Street and into the construction site compound, weather permitting.
- Night works will take place to install a new water pipe across Hawthorne Road when traffic volumes are at their lowest. Directly impacted residents will be notified of these works.
- Excavation and concrete work will start in the Hawthorne Park construction site compound.
- A temporary concrete footpath extension has been installed next to the Hawthorne Park toilet block.

## How will I be impacted?

**Safety** – barriers and signage around work areas are in place to keep everyone safe.

**Hours** – **Monday to Friday between 6.30am and 6.30pm.** Our workforce will arrive onsite earlier to prepare for the day's activities, however, no machinery will be operating at this time.

Impacted residents will be notified prior to these works.

Weather or site conditions may change our work schedules.

**Traffic Changes** – changed traffic conditions will be in place to look after the safety of road users, pedestrians and the workforce. Please observe and follow the traffic control signs at all times.

**Oak and Park Streets** - changed traffic conditions will be in place during excavation works. This will include the temporary removal of on-street parking near the work area. **Access to the Morningside AFL Club and private properties will remain open at all times (see maps overleaf).**

**Noise and Dust** – from excavation works and increased truck movements. We will endeavour to minimise impacts where possible.

## Upcoming work?

We will provide further updates as the project progresses, or if you have any questions, contact us:

Telephone: 1800 573 215

Email: [networks.community@fultonhogan.com.au](mailto:networks.community@fultonhogan.com.au)

Website:



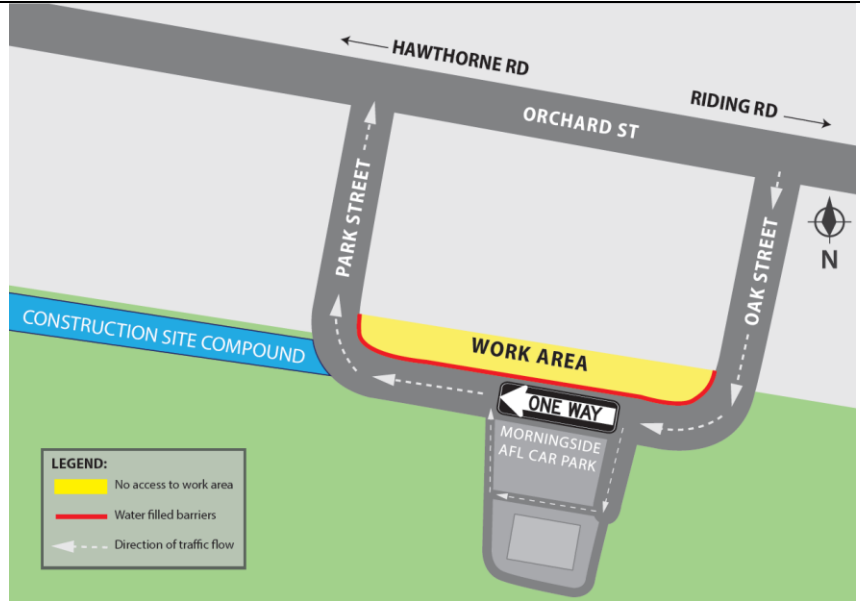
SCAN ME

### Maps for traffic changes on Oak Street and Park Street

The dates indicated below can change without notice due to site factors such as site conditions and weather.

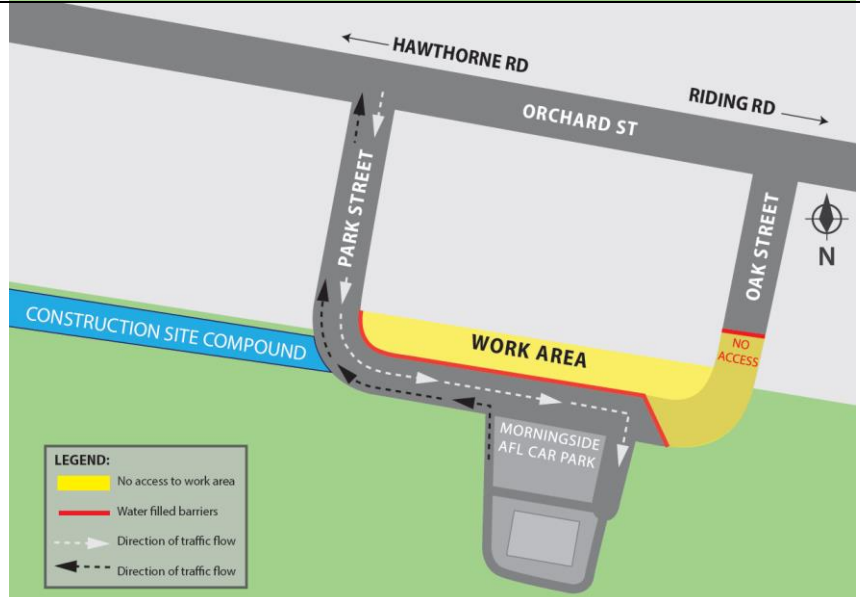
**Oak/Park Street – reduced to one-way, single lane traffic movements and no on-street parking near the work area**

From: **17 May –late June 2021**



**Eastern Corner of Oak Street closed to through traffic**  
 (Private property access only)

From: **24 May –mid June 2021**



**Western Corner of Park Street closed to through traffic**  
 (Private property access only)

From: **31 May – late June 2021**

