

What can I expect

Prior to relining, the sewer will be cleaned and inspected for up to **four weeks**. Relining of the S1 main line sewer will be completed in non-consecutive **segments, each lasting approximately four weeks**.

To ensure the safety of workers, the pipeline will need to be ventilated at various times and some **odour may be detected** when this occurs. The odour will be monitored and mitigated, to the extent possible, without compromising safety.

Relining also involves **noise generating activities** including:

- water pressure cleaning powered by a compressor
- breaking bitumen around the maintenance hole using a jackhammer and removing concrete
- installation of a steel road plate each night to cover the works prior to reopening the road for daytime traffic
- installation of winding machinery including levelling the base of the hole if required
- spiral winding work, including the use of motorised air circulation fans for ventilation
- cement grouting powered by a compressor
- CCTV inspection and reinstatement of the maintenance hole and road at completion.

How will the impacts be managed

The project team will minimise the impacts by:

- programming works at night between 8pm and 5am to minimise traffic impacts
- reopening all traffic lanes by 5am each morning
- managing noise levels at source with sound barriers, where possible
- monitoring and mitigating odour, to the extent possible, without compromising safety

- reinforcing site protocols about noise mitigation e.g. minimising loud voices
- using compressors with in-built noise suppression
- reviewing work methods regularly to identify if additional measures can be implemented to further reduce impacts.

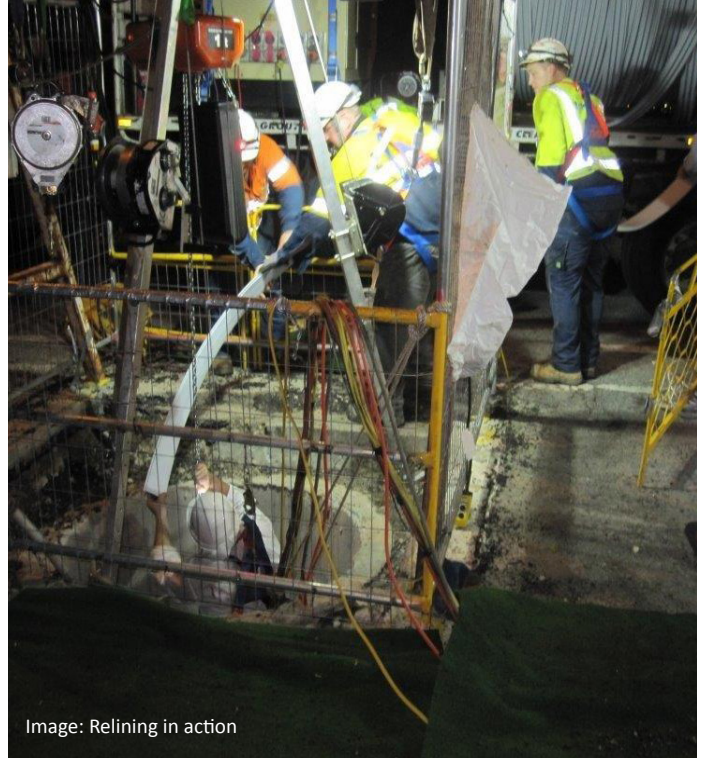


Image: Relining in action

Traffic management

Depending on the location of the maintenance hole, at least one lane on Ann Street will need to be closed at night between **8pm and 5am** during relining. All lanes will reopen by 5am daily.

Residents are asked to travel through the area with care and observe all signposting, speed limits and any directions given by traffic controllers.

Contact us

To register to receive project updates, please email community.feedback@urbanutilities.com.au or call 13 26 57 (8am to 6pm weekdays).

For more information visit
www.urbanutilities.com.au
or call 13 26 57

Queensland Urban Utilities
PO Box 2765 Brisbane QLD 4001

ABN 86 673 835 011
Q00815-2014 © Queensland Urban Utilities 2020

