



25 Bunya Street Eagle Farm Q 4009

Ph. (07) 3403 8888

Fx. (07) 3403 1898

4 th August 2005

OPERATING MANUAL FOR:

**AUSTRALIAN TRADE COAST SEWER PROJECT
LYTTON ROAD SUBMERSIBLE PUMP
STATION
SP 298 *CPS 219***

CLIENT:

**BRISBANE WATER
NETWORK SERVICES**

Table of contents

INTRODUCTION.....	3
CORROSION AND CATHODIC PROTECTION.....	3
PUMP DETAILS	4
CATHODIC PROTECTION DETAILS.....	5
PERFORMED TESTING	6
CONCLUSION.....	6
MAINTENANCE	6
Potential commissioning data.	7
Appendix A.....	8
Structure potential levels (Form 37)	8
Loop potentials.....	8
Standard cathodic protection unit Drg # xxxxxxxxxx.....	8
Submersible pump station general layout Drg #xxxxxxx.....	8

DRAWINGS

486/5/25- S101	Standard Sewerage Pump Station Cathodic Protection Unit
(No Number)	Bi Monthly Maintenance Program

INTRODUCTION

Steel when immersed or covered in water has a tendency to corrode (or rust) as the oxidized form is more stable than the metal.

Because of this, precaution must be taken to stop or minimize the corrosion reaction to an acceptable level consistent with the design life of the structure. This is normally achieved by the use of protective coatings which control the corrosion reaction by isolating the steel from its surrounding environment.

However, it is not practical to achieve a perfect coating and coating damage will always occur with time. Because of this, corrosion may occur at imperfections in the paint coating, causing further deterioration in the coating as well as loss of metal.

As a result of this, the coating defects must be rectified by periodic maintenance or an additional method of protection used to prevent this deterioration and corrosion occurring. This additional protection is achieved by the cathodic protection system.

CORROSION AND CATHODIC PROTECTION

Corrosion is an electrochemical process in that it is accompanied by a flow of electrical current.

Corrosion occurs on the surface of metals at active areas known as anodes, which are electrically continuous with less active or passive areas known as cathodes. The electric current flows from the anode through the electrolyte to the cathode, with the circuit being completed by the electrical continuity between the cathode and anode. In practice anodes and cathodes are generally part of the same metallic surface and individual anodic areas may be small.

In applying cathodic protection an external current is applied to the surface so that the entire surface to be protected acts as a cathode. This involves the use of an auxiliary anode and when the current flow from this anode is sufficient, no part of the structure acts as an anode.

An external source of direct current such as a transformer rectifier is used in conjunction with an anode consisting of material with a very slow corrosion rate.

While it is the flow of current which achieves the cathodic protection of the surface it is impractical to measure these currents over individual anodic areas to determine when cathodic protection has been achieved. However, with the flow of cathodic protection current, the structure becomes more negative with respect to the surrounding electrolyte. Because of this, it is possible to state values of metal/electrolyte potential at which corrosion does not occur. This metal/electrolyte potential is generally measured against a standard reference electrode which allows a reproducible potential at which corrosion does not occur to be quoted.

PUMP DETAILS

Size: 2 X 68.0 Kw submersible pumps.

Coating: Enamel coated.

Length: NA

Location: Lytton Road Lytton
UBD 142 L14

Construction
Drawings:

486/5/25- S101 Standard Sewerage Pump Station Cathodic Protection Unit.

CATHODIC PROTECTION DETAILS

Type of Cathodic Protection: Impressed Current.

Rectifier: Standard 24 Volt, 5.0 amp direct current output enclosed board inside the stainless steel switchboard. Rectifier has a 240V supply from the stainless steel switch board distribution panel.

Cathode: The cathode point is located on the pump motor, the ladder and the pipes. Two zinc reference are fitted to the pipes in the well and one near the ladder. The cathode point is where the cabling from the rectifier is attached to the structure under cathodic protection.

Anodes: One silicone iron anode is suspended from the roof of the well.

Test Points: Test points are installed on cathodically protected structures to enable testing to ensure full protection of the pumps and pipes. On these pumps and pipes test points have been brought out to the cathodic protection switch board.

Associated Drawings:

Standard Rectifier Wiring Diagram - 486/5/25-S101

Associated Standards:

AS/NZS 3000 2000 Electrical Installations

AS/NZS 2832.1 1998 Cathodic Protection of Metals-Pipes and Cables

Government Regulations:

Queensland Electricity Safety Rules and Regulations 2002

PERFORMED TESTING

- (1) Natural Potential Survey.
- (2) Testing of Insulated Flanges, Joints.
- (3) Current Drain Survey.
- (4) Rectifier Loop Resistance.
- (5) Foreign Structure Interference Survey and Mitigation.
- (6) Final Potential Survey and Commissioning.

Note: Attached copies of above testing can be found in Appendix A.

CONCLUSION

Full Cathodic protection has been achieved on these pumps and pipes.

MAINTENANCE

The cathodic protection system shall be maintained on a regular basis after commissioning. The maintenance schedule recommended in AS2832.1 is as set out below.

- (a) Bi-monthly.
- (b) Six monthly.
- (c) Five yearly.

Potential commissioning data.

Date: 04/08/2005.

Unit set at 2.6 volts 0.7amps.

Potentials to copper sulphate reference cell.

Potentials	Natural	On	Off
Pipe 1	-378mV	-1098mV	-910mV
Pipe 2	-377mV	-1070mV	-907mV
Ladder	-377mV	-1170mV	-1007mV

Interference Testing.

	On	Off	Swing
Fence	-625mV	-625mV	0mV

Insulated Joints.

The two insulated joints were tested.

Pipe 1 Bolt to flange greater than 40 Megohms. Flange to flange 15 Megohms.

Pipe 2 Bolt to flange greater than 37 Megohms. Flange to flange 15 Megohms

Pipe 1 8 x $\frac{3}{4}$ x 4 inch insulated bolts

Pipe 2 8 x $\frac{3}{4}$ x 4 inch insulated bolts

Tested by J. Taylor.

Appendix A

(Documents attached)

Structure potential levels (Form 37)

Loop potentials.

Standard cathodic protection unit Drg # xxxxxxxxx

Submersible pump station general layout Drg #xxxxxxx

Brisbane Water Engineering Services

Electrical Engineering Unit

Cathodic Protection System Loop Resistance

Lytton Rd.SP298 Rectifier CPS 219

Date: 04th August 2005

Cathodic Protection System:

Lytton Road Submersible Pump Station

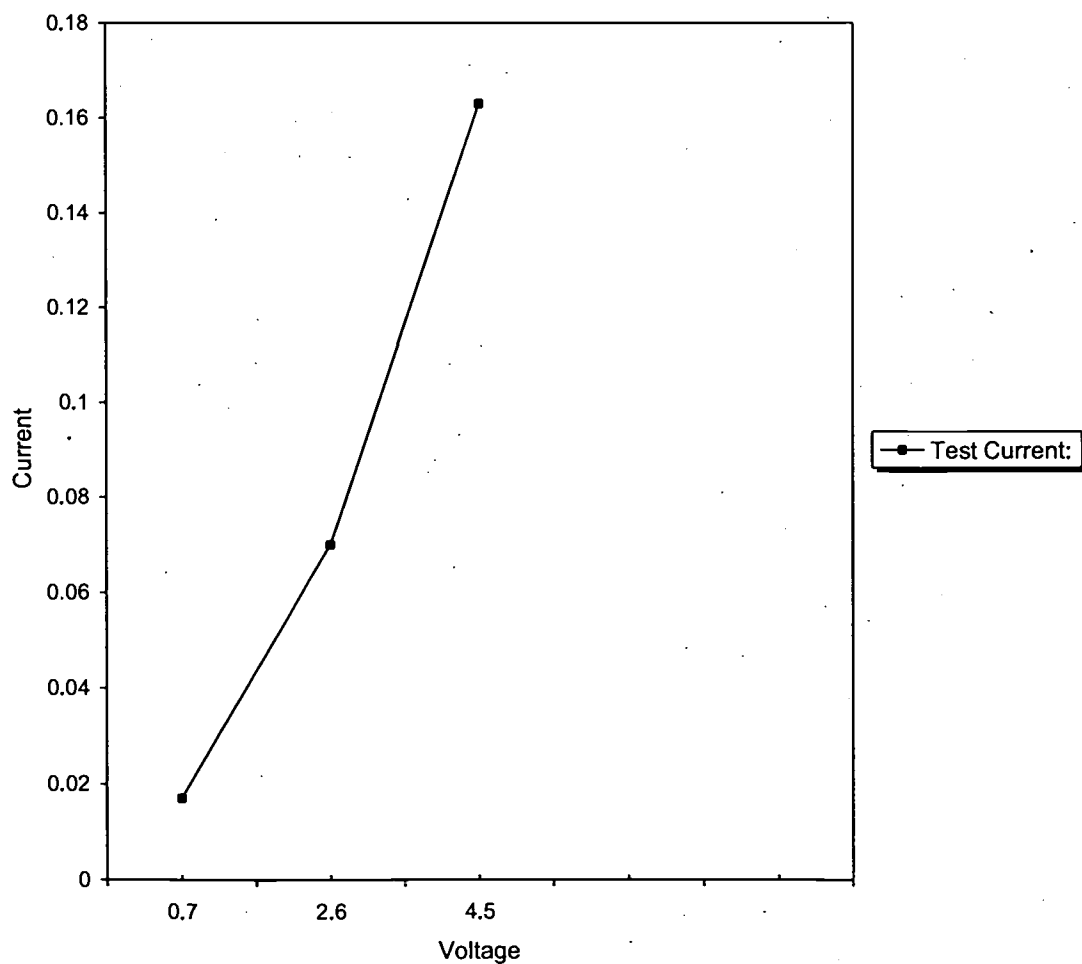
System Operating Volts: .2.6

System Operating amps 70.0ma

Test Voltage:		Test Current:	
(volts)		(amps)	
0.7		0.017	
2.6		0.07	
4.5		0.163	

Loop Resistance (ohms)
27.607362

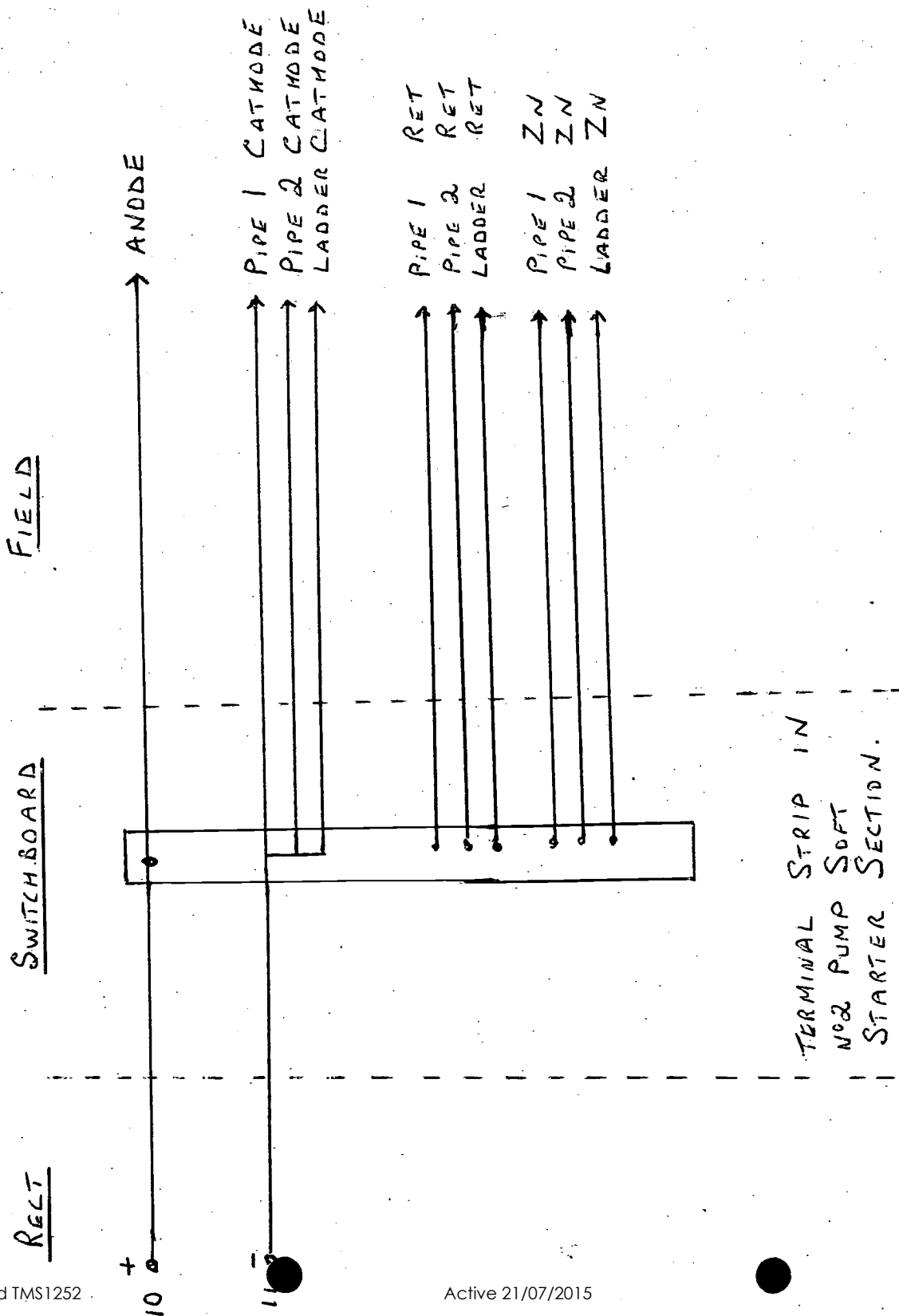
Loop Resistance

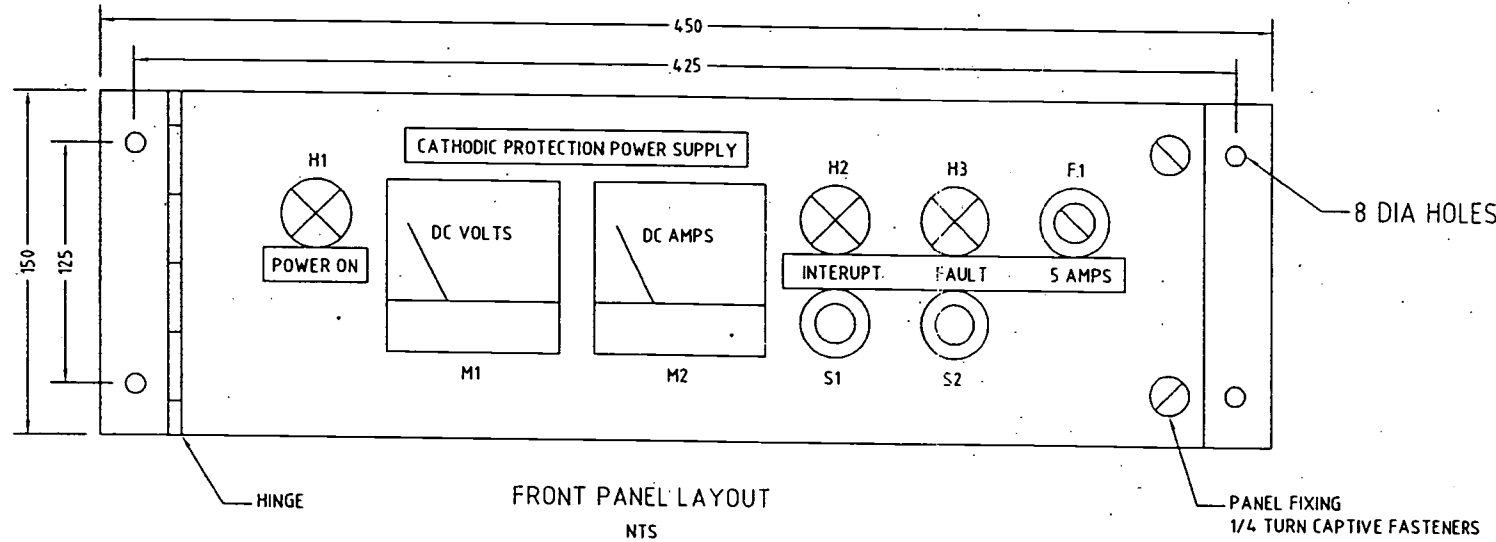
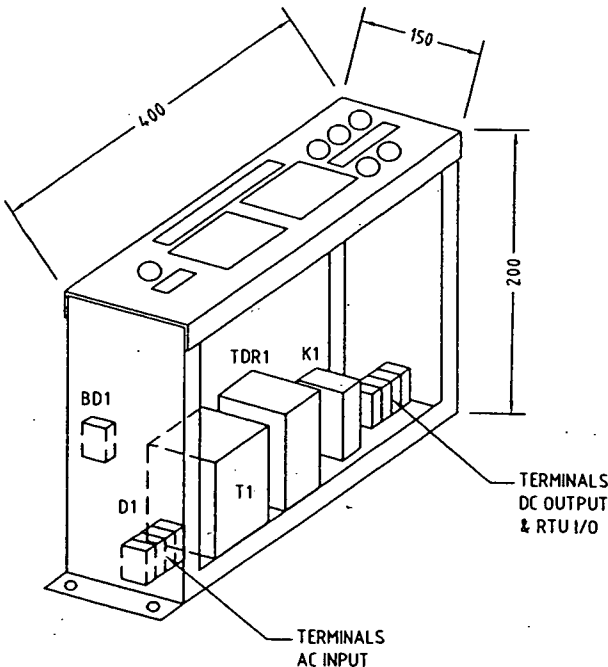
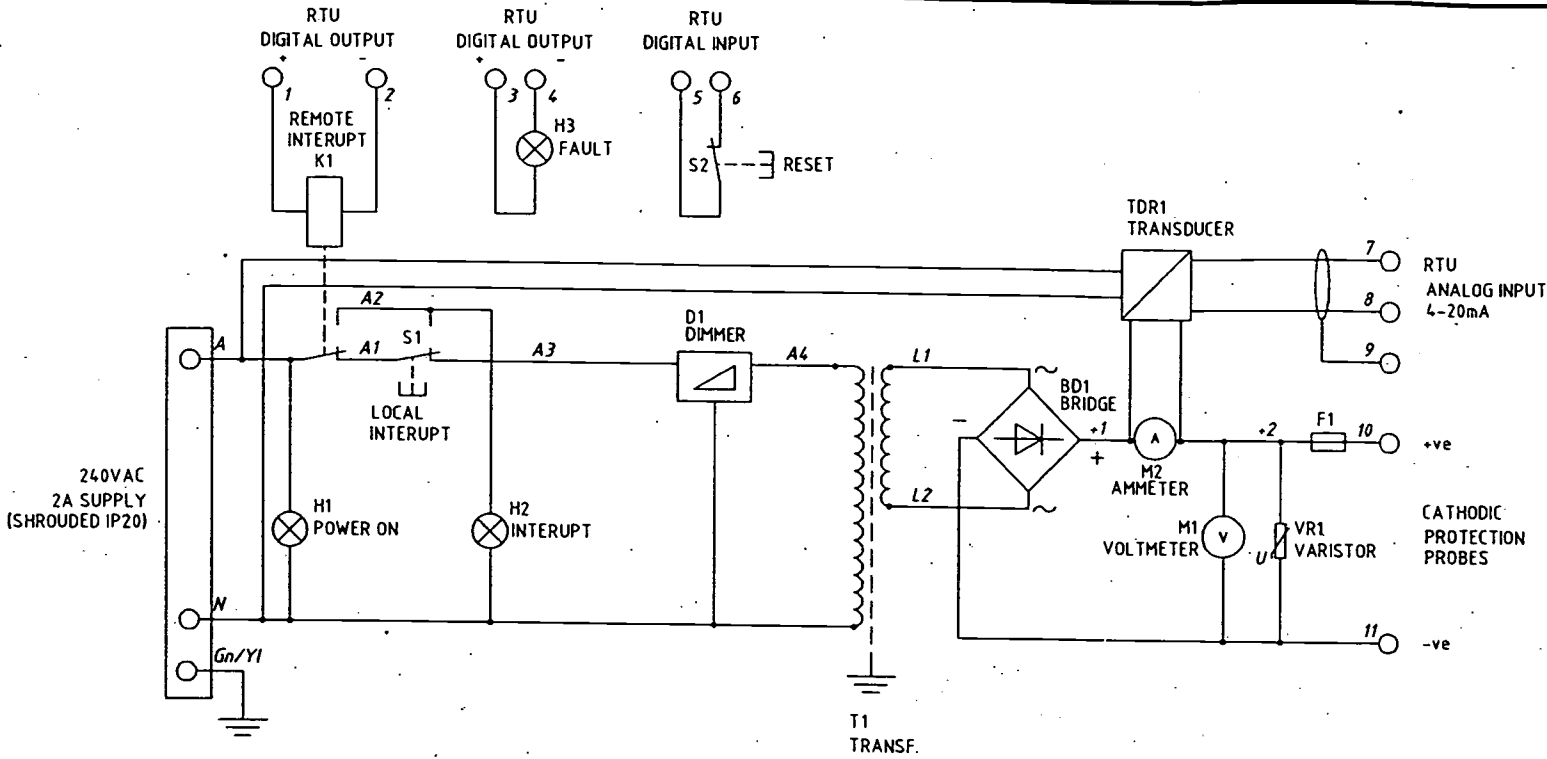


30/03/2006

^

LYTON RD SUB PUMP STATION





ITEM	QTY	DESCRIPTION (RS = RS COMPONENTS PART NUMBER)
BD1	1	DIODE BRIDGE SINGLE PHASE 25A 200V ISOLATED METAL BASE RS264888
D1	1	DIMMER 240V 250VA
F1	1	DC OUTPUT FUSE - PANEL MTG 5x20 FUSE HOLDER c/w 5A FUSE
H1	1	POWER ON INDICATOR 240VAC NEON RED
H2	1	INTERUPT INDICATOR 240VAC NEON RED
H3	1	FAULT INDICATOR
K1	1	REMOTE INTERUPT - RELAY 240V2A 2POLE CHANGEOVER + FW BASE
M1	1	VOLTMETER 0-30 V 69x53 RS259577
M2	1	AMMETER 0-5 A 69x53 RS259511
S1	1	LOCAL INTERUPT - MOMENTERY PUSH BUTTON SWITCH 240V2A CHANGEOVER
S2	1	FAULT RESET - MOMENTERY PUSH BUTTON SWITCH 240V2A CHANGEOVER
TDR1	1	TRANSDUCER - 0-10mV/4-20mA CLASS 1.0 24VAC POWERED
T1	1	TRANSFORMER - 240V/24V 4.16A RS805316 + SHROUDS RS805732
VR1	1	VARIATOR - SURGE SUPPRESSOR RS649150 (CLAMP 76V10Ap) (31VDC CONTINUOUS)
-	14	TERMINALS 4.0mm RAIL MTG + END COVERS & STOPS

DRAFT

Sheet 14

NOTE: THIS DRAWING CONTAINS BRISBANE CITY COUNCIL'S MINIMUM REQUIREMENTS AND IS TO BE USED AS A REFERENCE FOR PRODUCING THE DETAILED CONSTRUCTION DESIGN. THIS DRAWING IS NOT TO BE USED FOR CONSTRUCTION

No.	DATE	AMEND.	INITIALS
APPROVED			
FOR BRISBANE WATER			DATE
FOR URBAN MANAGEMENT			DATE
No. -OF SHEETS			



CADD FILE: 0:\STANDARDS\DRAWINGS\BW\STANDARDS\525S101.DWG

TITLE
STANDARD 0-54 kW A/T
SEWAGE PUMP STATION
CATHODIC PROTN. UNIT

DRAWING No. 486/5/25-S101 AMEND. 0