



ANNUAL DRINKING WATER PERFORMANCE REPORT

1 JULY 2022 – 30 JUNE 2023

TABLE OF CONTENTS

1.	INTRODUCTION	3
2.	WHERE WE SIT ON THE GRID	4
3.	DRINKING WATER QUALITY AT A GLANCE	5
	3.1 Drinking water quality and performance	5
4.	OUR SUPPLY AREA	6
	4.1 Your drinking water supply scheme	6
5.	WATER QUALITY SUMMARY	7
	5.1 Escherichia coli (E. coli)	7
	5.2 Health-related chemical assessment	8
	5.3 Aesthetic assessment	8
6.	WATER QUALITY CONTINUOUS IMPROVEMENTS - YEAR IN REVIEW	9
	6.1 Reservoir Integrity	9
	6.2 Disinfection management	9
	6.3 Water Quality Capital Improvements Program	10
	6.4 Predictive Modelling	10
	6.5 Driving change through collaboration	10
7.	ACCESSING THIS REPORT	11
8.	ADDENDUMS	12
	Addendum: Suburbs by water supply schemes	12
	Addendum: 2022-23 water quality compliance – E. coli	32
	Addendum: 2022-23- water quality compliance – health assessment	39
	Addendum: 2022-23 water quality – aesthetic assessment	46
9.	REPORT PUBLISHING INFORMATION	47

I. INTRODUCTION

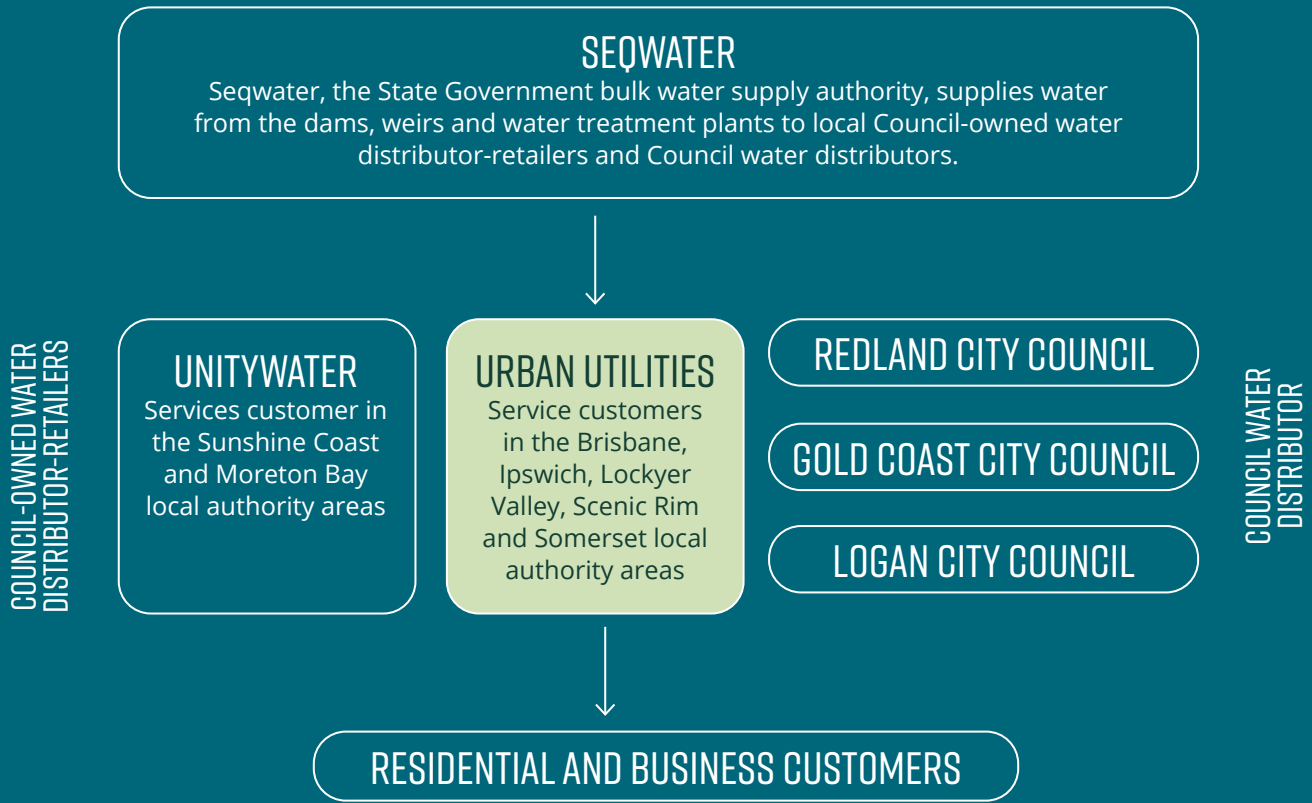
This report presents Urban Utilities drinking water quality performance for 2022-23.

This report provides an assurance to our customers within the Urban Utilities' five local government supply area in safety and quality of drinking water through a detailed summary of our performance against:

- *Water Supply (Safety and Reliability) Act 2008,*
- *Public Health Act 2005 ,*
- *Public Health Regulation 2018,*
- *Guideline for the Preparation, Review and Audit of Drinking Water Quality Management Plans - Version 3 (October 2022),*
- *Australian Drinking Water Guideline (ADWG) 2011,*
- *Interim Queensland Health Guideline Limit (Chlorate), and*
- *Urban Utilities water quality continuous improvements.*



2. WHERE WE SIT WITHIN THE WATER GRID



This is especially important when rainfall leaves some areas with full dams and other parts of the region with lower dam levels. The Water Grid can supplement but not completely replace local water supplies. Specifically for Urban Utilities the areas supplied from the water grid is the South East Queensland Water Supply System (SEQWSS), which includes Brisbane, Ipswich, the Scenic Rim townships of Harrisville, Peak Crossing and Warrill View.

Please direct any queries on water sources or treatment to Seqwater seqwater.com.au/contacts

3. DRINKING WATER QUALITY AT A GLANCE



123,830
WATER QUALITY TESTS CONDUCTED



12,112
WATER SAMPLES COLLECTED



133,720ML
OF DRINKING WATER SUPPLIED
TO CUSTOMER



11
WATER QUALITY REGULATORY
NOTIFICATIONS

3.1 DRINKING WATER QUALITY AND PERFORMANCE



Achieved compliance with the *Public Health Regulation 2018*¹ E.coli parameter.



Achieved compliance² with the *Australian Drinking Water Guidelines*³ chemical-related parameters⁴.

¹ *Public Health Regulation 2018 Part 9 Division 2 Section 52 Quality Standard for Drinking Water (4)(b)*

² *Australian Drinking Water Guidelines 2011 Information Sheet 3.2*

³ *Public Health Regulation 2018 Part 9 Division 2 Section 52 Quality Standard for Drinking Water (5)*

⁴ *Australian Drinking Water Guidelines 2011 Chapter 10 Table 10.6.*



4. OUR SUPPLY AREA

Urban Utilities provides drinking water services to 1.6 million people residing within a 14,384km² geographic area, which stretches from Cape Moreton in the east to the foot of the Toowoomba Range in the west, and from the Yabba State Forest in the north to the New South Wales border in the south.

Seqwater, the State Government bulk water supply authority, supplies water from the dams, weirs, and water treatment plants that it manages. Urban Utilities then distributes this treated water to your property via an extensive network of reservoirs, pumps, and pipes.

Urban Utilities' 12 drinking water supply schemes are the distribution systems within the five local government boundaries of our shareholders. Each scheme begins at the bulk supply points owned by Seqwater and ends after the water meter. (Figure 1: Urban Utilities' drinking water supply schemes)

1. Beaudesert,
2. Boonah – Kalbar also servicing localities extending out to Mt Alford and Aratula,
3. Canungra,
4. Esk – Toogoolawah,
5. Jimna,
6. Kilcoy,
7. Kooralbyn,
8. Linville,
9. Lowood – servicing townships in the Lockyer Valley and Somerset regions of Tarampa, Minden, Prenzlau, Coolana, Lowood, Vernor and Fernvale.
10. Rathdowney,
11. Somerset Township, and
12. South East Queensland (Brisbane and Ipswich) Water Supply System (SEQWSS) including the Scenic Rim townships of Harrisville, Peak Crossing and Warrill View.

The SEQWSS makes up approximately 96% of the total water supply network, with schemes in the Lockyer Valley, Scenic Rim and Somerset making up the remaining 4% (Table 1)

4.1 YOUR DRINKING WATER SUPPLY SCHEME

If you would like to know which supply scheme services your suburb, refer to Addendum A: Suburbs by water supply schemes. There are some suburbs that are not connected to our drinking water network, which means that residents in these areas do not receive drinking water directly to their properties via our distribution system.

Table 1: Urban Utilities Water Supply Schemes

Drinking Water Supply Scheme	No. of Service Connections
Beaudesert	3,722
Boonah-Kalbar	2,477
Canungra	535
Esk-Toogoolawah	1,252
Jimna	43
Kilcoy	1,106
Kooralbyn	988
Linville	82
Lowood	15,456
Rathdowney	103
Somerset Township	124
SEQWSS	599,664

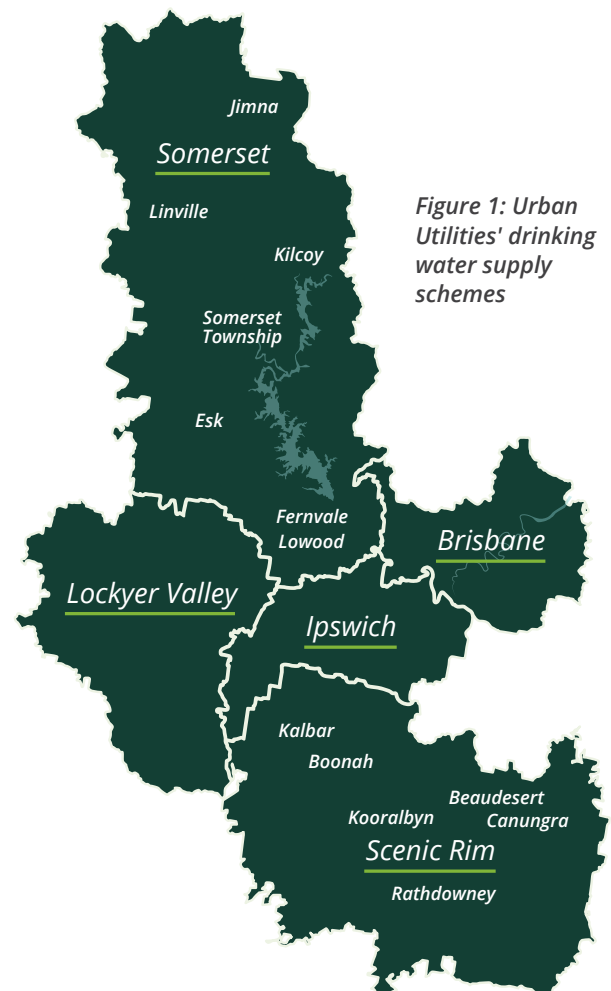


Figure 1: Urban Utilities' drinking water supply schemes

5. WATER QUALITY SUMMARY

The Scientific Analytical Services Laboratory⁵ (SAS Lab) is our trusted laboratory service provider and performs our sampling and analytical requirements.

In FY23, SAS Lab routinely sampled from over 350 dedicated drinking water sample points, collecting over 12,112 samples and performing 123,830 tests of our drinking water. The drinking water quality parameters were monitored and reviewed in accordance with Queensland legislative requirements, Interim Queensland Health Guideline value (Chlorate) and the ADWG.

In FY23, Urban Utilities met the prescribed health-related standards for all 12 drinking water supply schemes (see Table 2).

Table 2: Drinking water supply scheme results 1 July 2022 – 30 June 2023

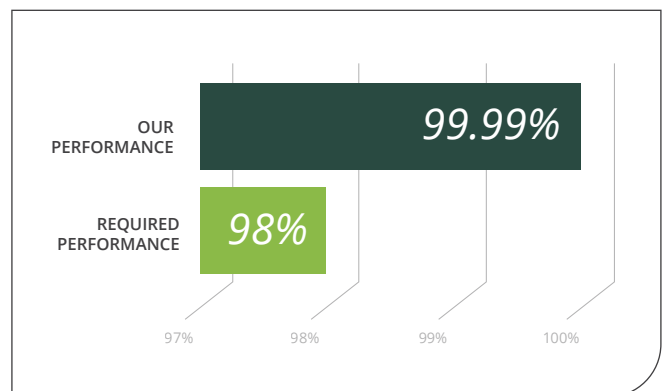
Overall			
Scheme	E. coli	Health	Aesthetic ⁷
Beautesert	✓	✓	✗
Boonah-Kalbar	✓	✓	✓
Canungra	✓	✓	✓
Esk-Toogoolawah	✓	✓	✓
Jimna	✓	✓	✓
Kilcoy	✓	✓	✓
Kooralbyn	✓	✓	✗
Linville	✓	✓	✓
Lowood	✓	✓	✓
Rathdowney	✓	✓	✓
Somerset	✓	✓	✓
SEQWSS	✓	✓	✓

5.1 ESCHERICHIA COLI (E. COLI)

Urban Utilities continued to achieve excellent health performance in FY23 in managing *E. coli* across all drinking water schemes, in accordance with legislative requirements. For each scheme, sampling exceeded the requirements under the regulations. In addition, the standard for drinking water of no detection of *E. coli* in 98% of samples⁶ collected over a 12-month period was achieved (Figure 2). *E. coli* was detected in 1 of the 12,112 samples, and Urban Utilities provided notification to the Regulator and took the necessary actions to ensure the supply of drinking water was safe.

E. coli water quality compliance details are provided in Addendum B: 2022-23 water quality compliance – *E. coli*, including the month-by-month performance for each drinking water supply scheme.

Figure 2: Percent of water samples in which *E. coli* was not detected



⁵ The Scientific Analytical Services Laboratory is owned by Urban Utilities and is accredited by the National Association of Testing Authorities (NATA).

⁶ Public Health Regulation 2018 Part 9 Division 2 Section 52 Quality Standard for Drinking Water (4)(b)

⁷ Public health is in the forefront of our operation at Urban Utilities, and we strive to meet aesthetic expectations of our customers. Urban Utilities has limited agency of hardness.

5.2 HEALTH-RELATED CHEMICAL ASSESSMENT

The Verification Monitoring Program (VMP) analyses health-related chemicals⁸ which are continuously trended and assessed against ADWG health-related limits and operational control triggers. These include:

Arsenic	Nickel
Chromium	Chlorine (Free)
Manganese	Fluoride
Barium	Trichloroacetic Acid
Copper	Chlorine (Total)
Monochloroacetic Acid	Lead
Cadmium	Trihalomethanes (Total)
Dichloroacetic Acid	Chlorate ⁹

All 12 drinking water schemes achieved the performance requirement for health-related chemical limit values defined in the ADWG using the 95th percentile (95th-%ile) calculation.

Health assessment details for each drinking water supply scheme are provided in Addendum C: 2022-23-water quality compliance – health assessment.

5.3 AESTHETIC ASSESSMENT¹⁰

Urban Utilities takes advantage of the VMP to continuously assess non-health related parameters which contribute to the way our water tastes, smells, and appears. We understand these physical aspects of drinking water are important in enriching the quality of life.

In FY23, 10 of the 12 drinking water schemes performed within the aesthetic guideline values detailed in the ADWG. The Beaudesert water scheme did not meet all aesthetic requirements due to water hardness concentrations observed throughout FY23. The source of hardness is found in the catchment and is more likely to be observed during drier periods. Urban Utilities is working closely with Seqwater in a capital project to connect Beaudesert to the grid, resulting in water quality more consistent with the rest of the SEQWSS.

The Kooralbyn water scheme also did not meet all aesthetic requirements due to water hardness concentrations observed throughout FY23. Urban Utilities continues to work with Seqwater to manage hardness within aesthetic guidelines.

Although, there were specific community concerns around water quality at Eastern Heights, Ipswich, in December 2022. Associated water quality testing revealed that the water supply in eastern Ipswich contained elevated concentrations of chemical substances, however the concentration of these chemicals did not exceeding aesthetic limits as defined by the ADWG.

The aesthetic assessment for each drinking water supply scheme is provided in Addendum D:2022-23 water quality – aesthetic assessment.

⁸ Australian Drinking Water Guidelines 2011 (September 2022 Revision) Chapter 10 Table 10.6

⁹ Queensland Health's interim guideline value for chlorate.

¹⁰ Public health is in the forefront of our operation at Urban Utilities, and we strive to meet aesthetic expectations of our customers. Urban Utilities has limited agency of hardness.

6. WATER QUALITY CONTINUOUS IMPROVEMENTS - YEAR IN REVIEW

Urban Utilities is committed to continual improvement and innovation in the management of our drinking water supply so that we provide our customers with a safe, high-quality, and reliable product. It's how we enrich quality of life.

Here are some of the activities we've been involved in over the last 12 months:



6.1 RESERVOIR INTEGRITY

Over the reporting period, Urban Utilities has continued to focus on reservoir integrity as a key requirement to ensuring safe drinking water. We have focused on improving the inspection process to effectively identify and rectify water quality risks. This year the program has completed comprehensive inspections of 109 reservoirs. The inspections provide valuable insights into the condition of our reservoirs and provide immediate improvements to water quality risks with corrective works conducted during the inspection process.



6.2 DISINFECTION MANAGEMENT

During the reporting period, disinfection management processes were further improved to ensure an effective barrier against pathogenic contamination of drinking water. The focus being on active management and reservoir summer operating plans, the result of which was a 38% improvement in reservoir disinfection levels.

Active management of disinfection continued throughout the year building further on the water quality surveillance process implemented in the prior reporting period. Works focused on summer preparedness and operational protocols aimed at actively managing drinking water reservoirs.

Urban Utilities continues to monitor disinfection performance through verification monitoring and operationally through a fleet of portable online analysers. We continue to leverage our inhouse service and maintenance calibration rig to ensure the ongoing data acquisition performance of the units.



6.3 WATER QUALITY CAPITAL IMPROVEMENTS PROGRAM

Urban Utilities continued to invest in upgrades of assets to ensure the quality and safety of drinking water. This program of works included the rehabilitation of reservoirs, including installation of new reservoir roofs, and refurbishment of floor and wall joints. This extensive program covers drinking water as a class of asset with \$2.68M spent on regular inspections and rectifications works and a further \$17.8M spent of capital improvement.

Urban Utilities is taking a zone approach to strategic planning to ensure performance standards are achieved throughout the service area and enable accurate and timely capital expenditure. These zone plans bring together our Operations, Maintenance, and Integrated Solutions teams to ensure our water quality solutions are connected to where it's needed most to ensure safe and reliable drinking water.



6.4 PREDICTIVE MODELLING

Building further on the last reporting period, predictive water quality models have been built allowing our teams to refine the configuration of our water networks to achieve improved water quality outcomes. These models were applied to enable the reservoir summer plans, without compromising customer standards of service and supply contingency. Through this action our capacity to see and influence on water age and disinfection has improved resulting in improved water quality outcomes.



6.5 DRIVING CHANGE THROUGH COLLABORATION

Urban Utilities continues to work with Seqwater to improve resilience of water supply and enhanced drinking water quality across our service area through the implementation of operating protocols and treatment options. Examples of this collaboration over the reporting period includes summer optimised secondary disinfection targets from North Pine and Mt Crosby Water Treatment Plants over the summer period and the operation of the Water Grid in a way that greatly contributed to disinfection improvement noted above.

Urban Utilities and Seqwater will continue to work on water quality objectives of the new supply arrangement to achieve best possible outcomes for the community.

7. ACCESSING THIS REPORT

This report is available on our website:
urbanutilities.com.au/publications

8. ADDENDUMS

ADDENDUM A: SUBURBS BY WATER SUPPLY SCHEMES

Suburb	P/Code	Local Government Area	Water Supply Scheme
Acacia Ridge	4110	Brisbane	South East Queensland Water Supply Scheme
Adare	4343	Lockyer Valley	Lowood
Albion	4010	Brisbane	South East Queensland Water Supply Scheme
Alderley	4051	Brisbane	South East Queensland Water Supply Scheme
Algester	4115	Brisbane	South East Queensland Water Supply Scheme
Allandale	4310	Scenic Rim	Boonah-Kalbar
Allenvue	4285	Scenic Rim	Not connected to the Urban Utilities network ¹
Amberley	4306	Ipswich	South East Queensland Water Supply Scheme
Annerley	4103	Brisbane	South East Queensland Water Supply Scheme
Anstead	4070	Brisbane	South East Queensland Water Supply Scheme
Anthony	4310	Scenic Rim	Not connected to the Urban Utilities network
Aratula	4309	Scenic Rim	Boonah-Kalbar
Archerfield	4108	Brisbane	South East Queensland Water Supply Scheme
Ascot	4007	Brisbane	South East Queensland Water Supply Scheme
Ashgrove	4060	Brisbane	South East Queensland Water Supply Scheme
Ashwell	4340	Ipswich	South East Queensland Water Supply Scheme
Aspley	4034	Brisbane	South East Queensland Water Supply Scheme
Atkinson Dam	4311	Lockyer Valley	Not connected to the Urban Utilities network
Auchenflower	4066	Brisbane	South East Queensland Water Supply Scheme
Augustine Heights	4300	Ipswich	South East Queensland Water Supply Scheme
Avoca Vale	4305	Somerset	Not connected to the Urban Utilities network
Bald Hills	4036	Brisbane	South East Queensland Water Supply Scheme
Ballard	4352	Lockyer Valley	Not connected to the Urban Utilities network
Balmoral	4171	Brisbane	South East Queensland Water Supply Scheme
Banks Creek	4306	Somerset	Not connected to the Urban Utilities network
Banyo	4014	Brisbane	South East Queensland Water Supply Scheme

¹ There are some suburbs which are not connected to our drinking water network, this means that residents in these areas do not receive drinking water directly to their properties via our distribution system.

Suburb	P/Code	Local Government Area	Water Supply Scheme
Bardon	4065	Brisbane	South East Queensland Water Supply Scheme
Barellan Point	4306	Ipswich	South East Queensland Water Supply Scheme
Barney View	4287	Scenic Rim	Not connected to the Urban Utilities network
Basin Pocket	4305	Ipswich	South East Queensland Water Supply Scheme
Beaudesert	4285	Scenic Rim	Beaudesert
Beechmont	4211	Scenic Rim	Not connected to the Urban Utilities network
Bellbird Park	4300	Ipswich	South East Queensland Water Supply Scheme
Bellbowrie	4070	Brisbane	South East Queensland Water Supply Scheme
Belmont	4153	Brisbane	South East Queensland Water Supply Scheme
Benobble	4275	Scenic Rim	Not connected to the Urban Utilities network
Berrinba	4117	Brisbane	South East Queensland Water Supply Scheme
Biarra	4313	Somerset	Not connected to the Urban Utilities network
Biddaddaba	4275	Scenic Rim	Not connected to the Urban Utilities network
Binna Burra	4211	Scenic Rim	Not connected to the Urban Utilities network
Birnam	4285	Scenic Rim	Not connected to the Urban Utilities network
Black Duck Creek	4343	Lockyer Valley	Not connected to the Urban Utilities network
Blacksoil	4306	Ipswich	South East Queensland Water Supply Scheme
Blackstone	4304	Ipswich	South East Queensland Water Supply Scheme
Blanchview	4352	Lockyer Valley	Not connected to the Urban Utilities network
Blantyre	4310	Scenic Rim	Not connected to the Urban Utilities network
Blenheim	4341	Lockyer Valley	Lowood
Boonah	4310	Scenic Rim	Boonah-Kalbar
Boondall	4034	Brisbane	South East Queensland Water Supply Scheme
Booval	4304	Ipswich	South East Queensland Water Supply Scheme
Borallon	4306	Somerset	Not connected to the Urban Utilities network
Bowen Hills	4006	Brisbane	South East Queensland Water Supply Scheme
Boyland	4275	Scenic Rim	Not connected to the Urban Utilities network
Bracken Ridge	4017	Brisbane	South East Queensland Water Supply Scheme

Suburb	P/Code	Local Government Area	Water Supply Scheme
Braemore	4313	Somerset	Not connected to the Urban Utilities network
Brassall	4305	Ipswich	South East Queensland Water Supply Scheme
Bridgeman Downs	4035	Brisbane	South East Queensland Water Supply Scheme
Brighton	4017	Brisbane	South East Queensland Water Supply Scheme
Brightview	4311	Lockyer Valley	Lowood
Brightview	4311	Somerset	Lowood
Brisbane	4000	Brisbane	South East Queensland Water Supply Scheme
Brisbane Airport	4008	Brisbane	South East Queensland Water Supply Scheme
Bromelton	4285	Scenic Rim	Not connected to the Urban Utilities network
Brookfield	4069	Brisbane	South East Queensland Water Supply Scheme
Brookwater	4300	Ipswich	South East Queensland Water Supply Scheme
Bryden	4312	Somerset	Not connected to the Urban Utilities network
Buaraba	4311	Somerset	Not connected to the Urban Utilities network
Buaraba South	4343	Lockyer Valley	Not connected to the Urban Utilities network
Bulimba	4171	Brisbane	South East Queensland Water Supply Scheme
Bulwer	4025	Brisbane	South East Queensland Water Supply Scheme
Bunburra	4310	Scenic Rim	Boonah-Kalbar
Bundamba	4304	Ipswich	South East Queensland Water Supply Scheme
Bunjurgen	4310	Scenic Rim	Boonah-Kalbar
Burbank	4156	Brisbane	South East Queensland Water Supply Scheme
Burnett Creek	4310	Scenic Rim	Not connected to the Urban Utilities network
Caboonbah	4312	Somerset	Not connected to the Urban Utilities network
Caffey	4344	Lockyer Valley	Not connected to the Urban Utilities network
Cainbabe	4285	Scenic Rim	Not connected to the Urban Utilities network
Calamvale	4116	Brisbane	South East Queensland Water Supply Scheme
Calvert	4340	Ipswich	South East Queensland Water Supply Scheme
Camira	4300	Ipswich	South East Queensland Water Supply Scheme
Camp Hill	4152	Brisbane	South East Queensland Water Supply Scheme

Suburb	P/Code	Local Government Area	Water Supply Scheme
Cannon Creek	4310	Scenic Rim	Not connected to the Urban Utilities network
Cannon Hill	4170	Brisbane	South East Queensland Water Supply Scheme
Canungra	4275	Scenic Rim	Canungra
Capalaba West	4157	Brisbane	South East Queensland Water Supply Scheme
Carina	4152	Brisbane	South East Queensland Water Supply Scheme
Carina Heights	4152	Brisbane	South East Queensland Water Supply Scheme
Carindale	4152	Brisbane	South East Queensland Water Supply Scheme
Carneys Creek	4310	Scenic Rim	Not connected to the Urban Utilities network
Carole Park	4300	Ipswich	South East Queensland Water Supply Scheme
Carpendale	4311	Lockyer Valley	Not connected to the Urban Utilities network
Carseldine	4034	Brisbane	South East Queensland Water Supply Scheme
Chandler	4155	Brisbane	South East Queensland Water Supply Scheme
Chapel Hill	4069	Brisbane	South East Queensland Water Supply Scheme
Charlwood	4309	Scenic Rim	Boonah-Kalbar
Chelmer	4068	Brisbane	South East Queensland Water Supply Scheme
Chermside	4032	Brisbane	South East Queensland Water Supply Scheme
Chermside West	4032	Brisbane	South East Queensland Water Supply Scheme
Chinghee Creek	4285	Scenic Rim	Not connected to the Urban Utilities network
Christmas Creek	4285	Scenic Rim	Not connected to the Urban Utilities network
Churchable	4343	Lockyer Valley	Not connected to the Urban Utilities network
Churchill	4305	Ipswich	South East Queensland Water Supply Scheme
Chuwar	4306	Brisbane	South East Queensland Water Supply Scheme
Chuwar	4306	Ipswich	South East Queensland Water Supply Scheme
Clarendon	4311	Somerset	Not connected to the Urban Utilities network
Clayfield	4011	Brisbane	South East Queensland Water Supply Scheme
Clumber	4309	Scenic Rim	Not connected to the Urban Utilities network
Coal Creek	4312	Somerset	Not connected to the Urban Utilities network
Coalfalls	4305	Ipswich	South East Queensland Water Supply Scheme

Suburb	P/Code	Local Government Area	Water Supply Scheme
Coleyville	4307	Scenic Rim	Not connected to the Urban Utilities network
Colinton	4306	Somerset	Not connected to the Urban Utilities network
College View	4311	Lockyer Valley	Lowood
Collingwood Park	4301	Ipswich	South East Queensland Water Supply Scheme
Coochin	4310	Scenic Rim	Not connected to the Urban Utilities network
Cooneimbardi	4313	Somerset	Not connected to the Urban Utilities network
Coolana	4311	Somerset	Lowood
Coominya	4311	Somerset	Not connected to the Urban Utilities network
Coopers Plains	4108	Brisbane	South East Queensland Water Supply Scheme
Coorparoo	4151	Brisbane	South East Queensland Water Supply Scheme
Corinda	4075	Brisbane	South East Queensland Water Supply Scheme
Coulson	4310	Scenic Rim	Boonah-Kalbar
Cowan Cowan	4025	Brisbane	South East Queensland Water Supply Scheme
Cressbrook	4313	Somerset	Not connected to the Urban Utilities network
Croftby	4310	Scenic Rim	Not connected to the Urban Utilities network
Crossdale	4312	Somerset	Not connected to the Urban Utilities network
Crowley Vale	4352	Lockyer Valley	Lowood
Cryna	4285	Scenic Rim	Beaudesert
Darlington	4285	Scenic Rim	Not connected to the Urban Utilities network
Darra	4076	Brisbane	South East Queensland Water Supply Scheme
Deagon	4017	Brisbane	South East Queensland Water Supply Scheme
Deebing Heights	4306	Ipswich	South East Queensland Water Supply Scheme
Derrymore	4343	Lockyer Valley	Not connected to the Urban Utilities network
Dinmore	4303	Ipswich	South East Queensland Water Supply Scheme
Doolandella	4077	Brisbane	South East Queensland Water Supply Scheme
Drewvale	4116	Brisbane	South East Queensland Water Supply Scheme
Dugandan	4310	Scenic Rim	Boonah-Kalbar
Dundas	4306	Somerset	Not connected to the Urban Utilities network

Suburb	P/Code	Local Government Area	Water Supply Scheme
Durack	4077	Brisbane	South East Queensland Water Supply Scheme
Dutton Park	4102	Brisbane	South East Queensland Water Supply Scheme
Eagle Farm	4009	Brisbane	South East Queensland Water Supply Scheme
East Brisbane	4169	Brisbane	South East Queensland Water Supply Scheme
East Haldon	4344	Lockyer Valley	Not connected to the Urban Utilities network
East Ipswich	4305	Ipswich	South East Queensland Water Supply Scheme
Eastern Heights	4305	Ipswich	South East Queensland Water Supply Scheme
Ebbw Vale	4304	Ipswich	South East Queensland Water Supply Scheme
Ebenezer	4304	Ipswich	South East Queensland Water Supply Scheme
Egypt	4352	Lockyer Valley	Not connected to the Urban Utilities network
Eight Mile Plains	4113	Brisbane	South East Queensland Water Supply Scheme
Ellen Grove	4078	Brisbane	South East Queensland Water Supply Scheme
England Creek	4306	Brisbane	South East Queensland Water Supply Scheme
England Creek	4306	Somerset	Not connected to the Urban Utilities network
Enoggera	4051	Brisbane	South East Queensland Water Supply Scheme
Enoggera Reservoir	4520	Brisbane	South East Queensland Water Supply Scheme
Esk	4312	Somerset	Esk-Toogoolawah
Eskdale	4312	Somerset	Not connected to the Urban Utilities network
Everton Park	4053	Brisbane	South East Queensland Water Supply Scheme
Fairfield	4103	Brisbane	South East Queensland Water Supply Scheme
Fairney View	4306	Somerset	Not connected to the Urban Utilities network
Fassifern	4309	Scenic Rim	Boonah-Kalbar
Fassifern Valley	4309	Scenic Rim	Boonah-Kalbar
Fernvale	4306	Somerset	Lowood
Ferny Glen	4275	Scenic Rim	Not connected to the Urban Utilities network
Ferny Grove	4055	Brisbane	South East Queensland Water Supply Scheme
Fifteen Mile	4344	Lockyer Valley	Not connected to the Urban Utilities network
Fig Tree Pocket	4069	Brisbane	South East Queensland Water Supply Scheme

Suburb	P/Code	Local Government Area	Water Supply Scheme
Fitzgibbon	4018	Brisbane	South East Queensland Water Supply Scheme
Flagstone Creek	4343	Lockyer Valley	Not connected to the Urban Utilities network
Flinders	4305	Ipswich	South East Queensland Water Supply Scheme
Flying Fox	4275	Scenic Rim	Not connected to the Urban Utilities network
Fordsdale	4342	Lockyer Valley	Not connected to the Urban Utilities network
Forest Hill	4343	Lockyer Valley	Lowood
Forest Lake	4078	Brisbane	South East Queensland Water Supply Scheme
Fortitude Valley	4006	Brisbane	South East Queensland Water Supply Scheme
Frazerview	4309	Scenic Rim	Not connected to the Urban Utilities network
Frenches Creek	4310	Scenic Rim	Not connected to the Urban Utilities network
Gailes	4300	Ipswich	South East Queensland Water Supply Scheme
Gatton	4341	Lockyer Valley	Lowood
Gaythorne	4051	Brisbane	South East Queensland Water Supply Scheme
Geebung	4034	Brisbane	South East Queensland Water Supply Scheme
Glamorganvale	4306	Somerset	Not connected to the Urban Utilities network
Glen Cairn	4342	Lockyer Valley	Not connected to the Urban Utilities network
Glen Esk	4312	Somerset	Esk-Toogoolawah
Glen Fern	4515	Somerset	Not connected to the Urban Utilities network
Gleneagle	4285	Scenic Rim	Beaudesert
Glenore Grove	4217	Lockyer Valley	Lowood
Goodna	4300	Ipswich	South East Queensland Water Supply Scheme
Goolman	4306	Ipswich	South East Queensland Water Supply Scheme
Gordon Park	4031	Brisbane	South East Queensland Water Supply Scheme
Graceville	4075	Brisbane	South East Queensland Water Supply Scheme
Grandchester	4340	Ipswich	South East Queensland Water Supply Scheme
Grange	4051	Brisbane	South East Queensland Water Supply Scheme
Grantham	4340	Lockyer Valley	Lowood
Greenslopes	4120	Brisbane	South East Queensland Water Supply Scheme

Suburb	P/Code	Local Government Area	Water Supply Scheme
Gregors Creek	4313	Somerset	Not connected to the Urban Utilities network
Gumdale	4154	Brisbane	South East Queensland Water Supply Scheme
Haigslea	4306	Ipswich	South East Queensland Water Supply Scheme
Haigslea	4306	Somerset	Not connected to the Urban Utilities network
Hamilton	4007	Brisbane	South East Queensland Water Supply Scheme
Harlin	4306	Somerset	Not connected to the Urban Utilities network
Harrisville	4307	Scenic Rim	South East Queensland Water Supply Scheme
Hatton Vale	4341	Lockyer Valley	Lowood
Hawthorne	4171	Brisbane	South East Queensland Water Supply Scheme
Hazeldean	4515	Somerset	Not connected to the Urban Utilities network
Heathwood	4110	Brisbane	South East Queensland Water Supply Scheme
Helidon	4344	Lockyer Valley	Lowood
Helidon Spa	4343	Lockyer Valley	Lowood
Hemmant	4174	Brisbane	South East Queensland Water Supply Scheme
Hendra	4011	Brisbane	South East Queensland Water Supply Scheme
Herston	4006	Brisbane	South East Queensland Water Supply Scheme
Highgate Hill	4101	Brisbane	South East Queensland Water Supply Scheme
Hillview	4285	Scenic Rim	Not connected to the Urban Utilities network
Holland Park	4121	Brisbane	South East Queensland Water Supply Scheme
Holland Park West	4121	Brisbane	South East Queensland Water Supply Scheme
Hoya	4310	Scenic Rim	Boonah-Kalbar
Illinbah	4275	Scenic Rim	Not connected to the Urban Utilities network
Inala	4077	Brisbane	South East Queensland Water Supply Scheme
Indooroopilly	4068	Brisbane	South East Queensland Water Supply Scheme
Ingoldsby	4344	Lockyer Valley	Not connected to the Urban Utilities network
Innisplain	4285	Scenic Rim	Not connected to the Urban Utilities network
Ipswich	4305	Ipswich	South East Queensland Water Supply Scheme
Iredale	4343	Lockyer Valley	Lowood

Suburb	P/Code	Local Government Area	Water Supply Scheme
Ironbark	4306	Ipswich	South East Queensland Water Supply Scheme
Ivory Creek	4313	Somerset	Not connected to the Urban Utilities network
Jamboree Heights	4074	Brisbane	South East Queensland Water Supply Scheme
Jeebropilly	4340	Ipswich	South East Queensland Water Supply Scheme
Jimna	4515	Somerset	Jimna
Jindalee	4074	Brisbane	South East Queensland Water Supply Scheme
Josephville	4285	Scenic Rim	Not connected to the Urban Utilities network
Junction View	4341	Lockyer Valley	Not connected to the Urban Utilities network
Kagaru	4285	Scenic Rim	Not connected to the Urban Utilities network
Kalbar	4309	Scenic Rim	Boonah-Kalbar
Kangaroo Point	4169	Brisbane	South East Queensland Water Supply Scheme
Karalee	4306	Ipswich	South East Queensland Water Supply Scheme
Karana Downs	4306	Brisbane	South East Queensland Water Supply Scheme
Karawatha	4117	Brisbane	South East Queensland Water Supply Scheme
Karrabin	4306	Ipswich	South East Queensland Water Supply Scheme
Kedron	4031	Brisbane	South East Queensland Water Supply Scheme
Kelvin Grove	4059	Brisbane	South East Queensland Water Supply Scheme
Kenmore	4069	Brisbane	South East Queensland Water Supply Scheme
Kenmore Hills	4069	Brisbane	South East Queensland Water Supply Scheme
Kensington Grove	4341	Lockyer Valley	Lowood
Kents Lagoon	4309	Scenic Rim	Not connected to the Urban Utilities network
Kents Pocket	4310	Scenic Rim	Boonah-Kalbar
Kentville	4341	Lockyer Valley	Not connected to the Urban Utilities network
Keperra	4054	Brisbane	South East Queensland Water Supply Scheme
Kerry	4285	Scenic Rim	Not connected to the Urban Utilities network
Kholo	4306	Brisbane	South East Queensland Water Supply Scheme
Kilcoy	4515	Somerset	Kilcoy
Kingaham	4515	Somerset	Not connected to the Urban Utilities network

Suburb	P/Code	Local Government Area	Water Supply Scheme
Knapp Creek	4285	Scenic Rim	Not connected to the Urban Utilities network
Kooralbyn	4285	Scenic Rim	Kooralbyn
Koorungal	4025	Brisbane	South East Queensland Water Supply Scheme
Kulgun	4309	Scenic Rim	Not connected to the Urban Utilities network
Kuraby	4112	Brisbane	South East Queensland Water Supply Scheme
Laidley	4343	Lockyer Valley	Lowood
Laidley Creek West	4341	Lockyer Valley	Not connected to the Urban Utilities network
Laidley Heights	4341	Lockyer Valley	Lowood
Laidley North	4341	Lockyer Valley	Lowood
Laidley South	4341	Lockyer Valley	Lowood
Lake Clarendon	4343	Lockyer Valley	Lowood
Lake Manchester	4306	Brisbane	South East Queensland Water Supply Scheme
Lake Manchester	4305	Somerset	Not connected to the Urban Utilities network
Lake Wivenhoe	4306	Somerset	Not connected to the Urban Utilities network
Lamington	4285	Scenic Rim	Not connected to the Urban Utilities network
Lanefield	4340	Ipswich	South East Queensland Water Supply Scheme
Larapinta	4110	Brisbane	South East Queensland Water Supply Scheme
Laravale	4285	Scenic Rim	Not connected to the Urban Utilities network
Lark Hill	4306	Somerset	Lowood
Lawes	4343	Lockyer Valley	Lowood
Lefthand Branch	4344	Lockyer Valley	Not connected to the Urban Utilities network
Leichhardt	4305	Ipswich	South East Queensland Water Supply Scheme
Lilydale	4342	Lockyer Valley	Not connected to the Urban Utilities network
Limestone Ridges	4305	Scenic Rim	Not connected to the Urban Utilities network
Linville	4306	Somerset	Linville
Lockrose	4344	Lockyer Valley	Lowood
Lockrose	4342	Somerset	Lowood
Lockyer	4311	Lockyer Valley	Lowood

Suburb	P/Code	Local Government Area	Water Supply Scheme
Lockyer Waters	4343	Lockyer Valley	Not connected to the Urban Utilities network
Lota	4179	Brisbane	South East Queensland Water Supply Scheme
Lower Cressbrook	4313	Somerset	Not connected to the Urban Utilities network
Lower Mount Walker	4340	Ipswich	South East Queensland Water Supply Scheme
Lower Mount Walker	4340	Scenic Rim	Not connected to the Urban Utilities network
Lower Tenthill	4341	Lockyer Valley	Lowood
Lowood	4311	Somerset	Lowood
Lutwyche	4030	Brisbane	South East Queensland Water Supply Scheme
Lytton	4178	Brisbane	South East Queensland Water Supply Scheme
Ma Ma Creek	4343	Lockyer Valley	Not connected to the Urban Utilities network
Macgregor	4109	Brisbane	South East Queensland Water Supply Scheme
Mackenzie	4156	Brisbane	South East Queensland Water Supply Scheme
Manly	4179	Brisbane	South East Queensland Water Supply Scheme
Manly West	4179	Brisbane	South East Queensland Water Supply Scheme
Mansfield	4122	Brisbane	South East Queensland Water Supply Scheme
Marburg	4346	Ipswich	South East Queensland Water Supply Scheme
Marburg	4346	Somerset	Not connected to the Urban Utilities network
Maroon	4310	Scenic Rim	Not connected to the Urban Utilities network
Mcdowall	4053	Brisbane	South East Queensland Water Supply Scheme
Merryvale	4340	Scenic Rim	Not connected to the Urban Utilities network
Middle Park	4074	Brisbane	South East Queensland Water Supply Scheme
Milbong	4310	Scenic Rim	Not connected to the Urban Utilities network
Milford	4310	Scenic Rim	Boonah-Kalbar
Milora	4309	Scenic Rim	Not connected to the Urban Utilities network
Milton	4064	Brisbane	South East Queensland Water Supply Scheme
Minden	4311	Somerset	Lowood
Mitchelton	4053	Brisbane	South East Queensland Water Supply Scheme
Moggill	4070	Brisbane	South East Queensland Water Supply Scheme

Suburb	P/Code	Local Government Area	Water Supply Scheme
Monsildale	4515	Somerset	Not connected to the Urban Utilities network
Moogerah	4309	Scenic Rim	Not connected to the Urban Utilities network
Moombra	4312	Somerset	Not connected to the Urban Utilities network
Moorang	4340	Scenic Rim	Not connected to the Urban Utilities network
Moore	4306	Somerset	Not connected to the Urban Utilities network
Moores Pocket	4305	Ipswich	South East Queensland Water Supply Scheme
Moorooka	4105	Brisbane	South East Queensland Water Supply Scheme
Moreton Island	4025	Brisbane	South East Queensland Water Supply Scheme
Morningside	4170	Brisbane	South East Queensland Water Supply Scheme
Morton Vale	4340	Lockyer Valley	Not connected to the Urban Utilities network
Morwincha	4309	Scenic Rim	Not connected to the Urban Utilities network
Mount Alford	4310	Scenic Rim	Boonah-Kalbar
Mount Archer	4701	Somerset	Not connected to the Urban Utilities network
Mount Barney	4287	Scenic Rim	Not connected to the Urban Utilities network
Mount Beppo	4313	Somerset	Not connected to the Urban Utilities network
Mount Berryman	4341	Lockyer Valley	Not connected to the Urban Utilities network
Mount Edwards	4309	Scenic Rim	Not connected to the Urban Utilities network
Mount Forbes	4340	Ipswich	South East Queensland Water Supply Scheme
Mount Forbes	4340	Scenic Rim	Not connected to the Urban Utilities network
Mount French	4310	Scenic Rim	Boonah-Kalbar
Mount Gipps	4285	Scenic Rim	Not connected to the Urban Utilities network
Mount Kilcoy	4515	Somerset	Not connected to the Urban Utilities network
Mount Lindesay	4287	Scenic Rim	Not connected to the Urban Utilities network
Mount Marrow	4306	Ipswich	South East Queensland Water Supply Scheme
Mount Mort	4340	Ipswich	South East Queensland Water Supply Scheme
Mount Stanley	4313	Somerset	Not connected to the Urban Utilities network
Mount Tarampa	4311	Somerset	Not connected to the Urban Utilities network
Mount Walker	4340	Scenic Rim	Not connected to the Urban Utilities network

Suburb	P/Code	Local Government Area	Water Supply Scheme
Mount Walker West	4340	Ipswich	South East Queensland Water Supply Scheme
Mount Walker West	4340	Scenic Rim	Not connected to the Urban Utilities network
Mt Byron	4312	Somerset	Not connected to the Urban Utilities network
Mt Coot-tha	4066	Brisbane	South East Queensland Water Supply Scheme
Mt Crosby	4306	Brisbane	South East Queensland Water Supply Scheme
Mt Gravatt	4122	Brisbane	South East Queensland Water Supply Scheme
Mt Gravatt East	4122	Brisbane	South East Queensland Water Supply Scheme
Mt Hallen	4312	Somerset	Not connected to the Urban Utilities network
Mt Ommaney	4074	Brisbane	South East Queensland Water Supply Scheme
Mt Sylvia	4311	Lockyer Valley	Not connected to the Urban Utilities network
Mt Tarampa	4311	Somerset	Somerset
Mt Whitestone	4352	Lockyer Valley	Not connected to the Urban Utilities network
Muirlea	4306	Ipswich	South East Queensland Water Supply Scheme
Mulgowie	4343	Lockyer Valley	Not connected to the Urban Utilities network
Munbilla	4309	Scenic Rim	Not connected to the Urban Utilities network
Murarrie	4172	Brisbane	South East Queensland Water Supply Scheme
Murphys Creek	4341	Lockyer Valley	Lowood
Murrumba	4312	Somerset	Not connected to the Urban Utilities network
Mutdapilly	4307	Scenic Rim	South East Queensland Water Supply Scheme
Mutdapilly	4307	Ipswich	South East Queensland Water Supply Scheme
Nathan	4111	Brisbane	South East Queensland Water Supply Scheme
New Chum	4303	Ipswich	South East Queensland Water Supply Scheme
New Farm	4005	Brisbane	South East Queensland Water Supply Scheme
Newmarket	4051	Brisbane	South East Queensland Water Supply Scheme
Newstead	4006	Brisbane	South East Queensland Water Supply Scheme
Newtown	4305	Ipswich	South East Queensland Water Supply Scheme
Nindooinbah	4285	Scenic Rim	Not connected to the Urban Utilities network
Norman Park	4170	Brisbane	South East Queensland Water Supply Scheme

Suburb	P/Code	Local Government Area	Water Supply Scheme
North Booval	4304	Ipswich	South East Queensland Water Supply Scheme
North Ipswich	4305	Ipswich	South East Queensland Water Supply Scheme
North Tivoli	4305	Ipswich	South East Queensland Water Supply Scheme
Northgate	4013	Brisbane	South East Queensland Water Supply Scheme
Nudgee	4014	Brisbane	South East Queensland Water Supply Scheme
Nudgee Beach	4014	Brisbane	South East Queensland Water Supply Scheme
Nundah	4012	Brisbane	South East Queensland Water Supply Scheme
Oaky Creek	4285	Scenic Rim	Not connected to the Urban Utilities network
Obum Obum	4309	Scenic Rim	Boonah-Kalbar
One Mile	4305	Ipswich	South East Queensland Water Supply Scheme
O'reilly	4211	Scenic Rim	Not connected to the Urban Utilities network
Ottaba	4313	Somerset	Not connected to the Urban Utilities network
Oxley	4075	Brisbane	South East Queensland Water Supply Scheme
Paddington	4064	Brisbane	South East Queensland Water Supply Scheme
Palen Creek	4287	Scenic Rim	Not connected to the Urban Utilities network
Pallara	4110	Brisbane	South East Queensland Water Supply Scheme
Parkinson	4115	Brisbane	South East Queensland Water Supply Scheme
Patrick Estate	4311	Somerset	Not connected to the Urban Utilities network
Peak Crossing	4306	Scenic Rim	South East Queensland Water Supply Scheme
Petrie Terrace	4000	Brisbane	South East Queensland Water Supply Scheme
Pine Mountain	4306	Ipswich	South East Queensland Water Supply Scheme
Pinjarra Hills	4069	Brisbane	South East Queensland Water Supply Scheme
Pinkenba	4008	Brisbane	South East Queensland Water Supply Scheme
Placid Hills	4352	Lockyer Valley	Lowood
Plainland	4311	Lockyer Valley	Lowood
Port of Brisbane	4178	Brisbane	South East Queensland Water Supply Scheme
Postmans Ridge	4352	Lockyer Valley	Lowood
Prenzlau	4311	Somerset	Lowood

Suburb	P/Code	Local Government Area	Water Supply Scheme
Preston	4343	Lockyer Valley	Not connected to the Urban Utilities network
Pullenvale	4069	Brisbane	South East Queensland Water Supply Scheme
Purga	4306	Ipswich	South East Queensland Water Supply Scheme
Raceview	4305	Ipswich	South East Queensland Water Supply Scheme
Radford	4307	Scenic Rim	Not connected to the Urban Utilities network
Ransome	4154	Brisbane	South East Queensland Water Supply Scheme
Rathdowney	4287	Scenic Rim	Rathdowney
Red Hill	4059	Brisbane	South East Queensland Water Supply Scheme
Redbank	4301	Ipswich	South East Queensland Water Supply Scheme
Redbank Creek	4312	Somerset	Not connected to the Urban Utilities network
Redbank Plains	4301	Ipswich	South East Queensland Water Supply Scheme
Regency Downs	4344	Lockyer Valley	Lowood
Richlands	4077	Brisbane	South East Queensland Water Supply Scheme
Rifle Range	4311	Somerset	Lowood
Ringwood	4343	Lockyer Valley	Not connected to the Urban Utilities network
Ripley	4306	Ipswich	South East Queensland Water Supply Scheme
Riverhills	4074	Brisbane	South East Queensland Water Supply Scheme
Riverview	4303	Ipswich	South East Queensland Water Supply Scheme
Roadvale	4310	Scenic Rim	Not connected to the Urban Utilities network
Robertson	4109	Brisbane	South East Queensland Water Supply Scheme
Rochedale	4123	Brisbane	South East Queensland Water Supply Scheme
Rocklea	4106	Brisbane	South East Queensland Water Supply Scheme
Rockmount	4343	Lockyer Valley	Not connected to the Urban Utilities network
Rockside	4340	Lockyer Valley	Not connected to the Urban Utilities network
Ropeley	4344	Lockyer Valley	Not connected to the Urban Utilities network
Rosevale	4340	Scenic Rim	Not connected to the Urban Utilities network
Rosewood	4340	Ipswich	South East Queensland Water Supply Scheme

Suburb	P/Code	Local Government Area	Water Supply Scheme
Runcorn	4113	Brisbane	South East Queensland Water Supply Scheme
Running Creek	4287	Scenic Rim	Not connected to the Urban Utilities network
Sadliers Crossing	4305	Ipswich	South East Queensland Water Supply Scheme
Salisbury	4107	Brisbane	South East Queensland Water Supply Scheme
Sandgate	4017	Brisbane	South East Queensland Water Supply Scheme
Sandy Creek	4570	Somerset	Not connected to the Urban Utilities network
Sarabah	4275	Scenic Rim	Not connected to the Urban Utilities network
Scrub Creek	4313	Somerset	Not connected to the Urban Utilities network
Seven Hills	4170	Brisbane	South East Queensland Water Supply Scheme
Seventeen Mile	4343	Lockyer Valley	Not connected to the Urban Utilities network
Seventeen Mile Rocks	4073	Brisbane	South East Queensland Water Supply Scheme
Sheep Station Creek	4515	Somerset	Kilcoy
Sherwood	4075	Brisbane	South East Queensland Water Supply Scheme
Shorncliffe	4017	Brisbane	South East Queensland Water Supply Scheme
Silkstone	4304	Ipswich	South East Queensland Water Supply Scheme
Silver Ridge	4344	Lockyer Valley	Not connected to the Urban Utilities network
Silverdale	4307	Scenic Rim	Not connected to the Urban Utilities network
Sinnamon Park	4073	Brisbane	South East Queensland Water Supply Scheme
Somerset Dam	4312	Somerset	Somerset
South Brisbane	4101	Brisbane	South East Queensland Water Supply Scheme
South Ripley	4306	Ipswich	South East Queensland Water Supply Scheme
Southern Lamington	4211	Scenic Rim	Not connected to the Urban Utilities network
Split Yard Creek	4306	Somerset	Not connected to the Urban Utilities network
Spring Creek	4340	Lockyer Valley	Lowood
Spring Hill	4000	Brisbane	South East Queensland Water Supply Scheme
Spring Mountain	4300	Ipswich	South East Queensland Water Supply Scheme
Springfield	4300	Ipswich	South East Queensland Water Supply Scheme
Springfield Central	4300	Ipswich	South East Queensland Water Supply Scheme

Suburb	P/Code	Local Government Area	Water Supply Scheme
Springfield Lakes	4300	Ipswich	South East Queensland Water Supply Scheme
St Lucia	4067	Brisbane	South East Queensland Water Supply Scheme
Stafford	4053	Brisbane	South East Queensland Water Supply Scheme
Stafford Heights	4053	Brisbane	South East Queensland Water Supply Scheme
Stockyard	4344	Lockyer Valley	Not connected to the Urban Utilities network
Stretton	4116	Brisbane	South East Queensland Water Supply Scheme
Summerholm	4341	Lockyer Valley	Not connected to the Urban Utilities network
Sumner	4074	Brisbane	South East Queensland Water Supply Scheme
Sunnybank	4109	Brisbane	South East Queensland Water Supply Scheme
Sunnybank Hills	4109	Brisbane	South East Queensland Water Supply Scheme
Swanbank	4306	Ipswich	South East Queensland Water Supply Scheme
Tabooba	4285	Scenic Rim	Not connected to the Urban Utilities network
Tabragalba	4285	Scenic Rim	Not connected to the Urban Utilities network
Taigum	4018	Brisbane	South East Queensland Water Supply Scheme
Tallegalla	4340	Ipswich	South East Queensland Water Supply Scheme
Tamborine	4270	Scenic Rim	Not connected to the Urban Utilities network
Tamborine Mountain	4272	Scenic Rim	Not connected to the Urban Utilities network
Tamrookum	4285	Scenic Rim	Not connected to the Urban Utilities network
Tamrookum Creek	4285	Scenic Rim	Not connected to the Urban Utilities network
Tarampa	4311	Somerset	Lowood
Taringa	4068	Brisbane	South East Queensland Water Supply Scheme
Tarome	4309	Scenic Rim	Not connected to the Urban Utilities network
Tarragindi	4121	Brisbane	South East Queensland Water Supply Scheme
Templin	4310	Scenic Rim	Boonah-Kalbar
Teneriffe	4005	Brisbane	South East Queensland Water Supply Scheme
Tennyson	4105	Brisbane	South East Queensland Water Supply Scheme
Teviotville	4309	Scenic Rim	Boonah-Kalbar
Thagoona	4306	Ipswich	South East Queensland Water Supply Scheme

Suburb	P/Code	Local Government Area	Water Supply Scheme
The Bluff	4340	Ipswich	South East Queensland Water Supply Scheme
The Gap	4061	Brisbane	South East Queensland Water Supply Scheme
Thornton	4344	Lockyer Valley	Not connected to the Urban Utilities network
Tingalpa	4173	Brisbane	South East Queensland Water Supply Scheme
Tivoli	4305	Ipswich	South East Queensland Water Supply Scheme
Toogoolawah	4313	Somerset	Esk-Toogoolawah
Toowong	4066	Brisbane	South East Queensland Water Supply Scheme
Townson	4352	Lockyer Valley	Not connected to the Urban Utilities network
Undullah	4285	Scenic Rim	Not connected to the Urban Utilities network
Upper Brookfield	4069	Brisbane	South East Queensland Water Supply Scheme
Upper Flagstone	4343	Lockyer Valley	Not connected to the Urban Utilities network
Upper Kedron	4055	Brisbane	South East Queensland Water Supply Scheme
Upper Lockyer	4347	Lockyer Valley	Not connected to the Urban Utilities network
Upper Mt Gravatt	4122	Brisbane	South East Queensland Water Supply Scheme
Upper Tenthill	4343	Lockyer Valley	Not connected to the Urban Utilities network
Veradilla	4359	Lockyer Valley	Lowood
Veresdale	4285	Scenic Rim	Not connected to the Urban Utilities network
Veresdale Scrub	4285	Scenic Rim	Not connected to the Urban Utilities network
Vernor	4306	Somerset	Lowood
Villeneuve	4514	Somerset	Not connected to the Urban Utilities network
Vinegar Hill	4352	Lockyer Valley	Not connected to the Urban Utilities network
Virginia	4014	Brisbane	South East Queensland Water Supply Scheme
Wacol	4076	Brisbane	South East Queensland Water Supply Scheme
Wakerley	4154	Brisbane	South East Queensland Water Supply Scheme
Wallaces Creek	4310	Scenic Rim	Not connected to the Urban Utilities network
Walloon	4306	Ipswich	South East Queensland Water Supply Scheme
Wanora	4306	Somerset	Not connected to the Urban Utilities network
Warrill View	4307	Scenic Rim	South East Queensland Water Supply Scheme

Suburb	P/Code	Local Government Area	Water Supply Scheme
Washpool	4306	Scenic Rim	Not connected to the Urban Utilities network
Wavell Heights	4012	Brisbane	South East Queensland Water Supply Scheme
West End	4101	Brisbane	South East Queensland Water Supply Scheme
West Haldon	4347	Lockyer Valley	Not connected to the Urban Utilities network
West Ipswich	4305	Ipswich	South East Queensland Water Supply Scheme
Westlake	4074	Brisbane	South East Queensland Water Supply Scheme
White Mountain	4352	Lockyer Valley	Not connected to the Urban Utilities network
White Rock	4306	Ipswich	South East Queensland Water Supply Scheme
Willawong	4110	Brisbane	South East Queensland Water Supply Scheme
Willowbank	4306	Ipswich	South East Queensland Water Supply Scheme
Wilson's Plains	4307	Scenic Rim	Not connected to the Urban Utilities network
Wilston	4051	Brisbane	South East Queensland Water Supply Scheme
Windsor	4030	Brisbane	South East Queensland Water Supply Scheme
Winwill	4343	Lockyer Valley	Not connected to the Urban Utilities network
Winya	4515	Somerset	Kilcoy
Wishart	4122	Brisbane	South East Queensland Water Supply Scheme
Withcott	4343	Lockyer Valley	Lowood
Witheren	4275	Scenic Rim	Not connected to the Urban Utilities network
Wivenhoe Hill	4311	Somerset	Not connected to the Urban Utilities network
Wivenhoe Pocket	4306	Somerset	Not connected to the Urban Utilities network
Wonglepong	4275	Scenic Rim	Not connected to the Urban Utilities network
Woodbine	4343	Lockyer Valley	Not connected to the Urban Utilities network
Woodend	4305	Ipswich	South East Queensland Water Supply Scheme
Woodlands	4343	Lockyer Valley	Not connected to the Urban Utilities network
Woolloongabba	4102	Brisbane	South East Queensland Water Supply Scheme
Woolmar	4515	Somerset	Kilcoy
Woolooman	4310	Scenic Rim	Not connected to the Urban Utilities network
Wooloowin	4030	Brisbane	South East Queensland Water Supply Scheme

Suburb	P/Code	Local Government Area	Water Supply Scheme
Woolshed	4340	Ipswich	South East Queensland Water Supply Scheme
Wulkuraka	4305	Ipswich	South East Queensland Water Supply Scheme
Wyaralong	4310	Scenic Rim	Not connected to the Urban Utilities network
Wynnum	4178	Brisbane	South East Queensland Water Supply Scheme
Wynnum West	4178	Brisbane	South East Queensland Water Supply Scheme
Yamanto	4305	Ipswich	South East Queensland Water Supply Scheme
Yeerongpilly	4105	Brisbane	South East Queensland Water Supply Scheme
Yeronga	4104	Brisbane	South East Queensland Water Supply Scheme
Yimbun	4313	Somerset	Not connected to the Urban Utilities network
Zillmere	4034	Brisbane	South East Queensland Water Supply Scheme

ADDENDUM B: 2022-23 WATER QUALITY COMPLIANCE – *E. COLI*

Overall						
Scheme	Number of samples required	Actual Number of Samples	Number of samples <i>E.coli</i> detected	Required Performance (%)	Actual Performance (%)	Compliant
Beaudesert	64	304	0	98	100	✓
Boonah-Kalbar	64	465	0	98	100	✓
Canungra	12	66	0	98	100	✓
Esk-Toogoolawah	52	189	0	98	100	✓
Jimna	12	52	0	98	100	✓
Kilcoy	52	138	0	98	100	✓
Kooralbyn	52	191	0	98	100	✓
Linville	12	52	0	98	100	✓
Lowood	160	1641	1	98	99.9	✓
Rathdowney	12	71	0	98	100	✓
SEQWSS	1992	8891	0	98	100	✓
Somerset	12	52	0	98	100	✓

Beaudesert <i>E.coli</i>						
2022-2023 Month	Number of samples required	Actual Number of Samples	Number of samples <i>E.coli</i> detected	Required Performance (%)	12 Month Rolling Average (%)	Compliant
July	5	24	0	98	100	✓
August	6	30	0	98	100	✓
September	5	24	0	98	100	✓
October	5	24	0	98	100	✓
November	6	30	0	98	100	✓
December	5	24	0	98	100	✓
January	5	24	0	98	100	✓
February	5	24	0	98	100	✓
March	6	30	0	98	100	✓
April	5	24	0	98	100	✓
May	6	26	0	98	100	✓
June	5	20	0	98	100	✓

Boonah-Kalbar <i>E.coli</i>						
2022-2023 Month	Number of samples required	Actual Number of Samples	Number of samples <i>E.coli</i> detected	Required Performance (%)	12 Month Rolling Average (%)	Compliant
July	5	40	0	98	99.4	✓
August	6	50	0	98	99.4	✓
September	5	40	0	98	99.5	✓
October	5	37	0	98	99.5	✓
November	6	44	0	98	99.5	✓
December	5	35	0	98	99.8	✓
January	5	43	0	98	99.8	✓
February	5	34	0	98	99.8	✓
March	6	35	0	98	99.8	✓
April	5	34	0	98	99.8	✓
May	6	34	0	98	100	✓
June	5	39	0	98	100	✓

Canungra <i>E.coli</i>						
2022-2023 Month	Number of samples required	Actual Number of Samples	Number of samples <i>E.coli</i> detected	Required Performance (%)	12 Month Rolling Average (%)	Compliant
July	1	8	0	98	100	✓
August	1	10	0	98	100	✓
September	1	8	0	98	100	✓
October	1	5	0	98	100	✓
November	1	6	0	98	100	✓
December	1	4	0	98	100	✓
January	1	4	0	98	100	✓
February	1	4	0	98	100	✓
March	1	6	0	98	100	✓
April	1	4	0	98	100	✓
May	1	4	0	98	100	✓
June	1	3	0	98	100	✓

Esk-Toogoolawah <i>E.coli</i>						
2022-2023 Month	Number of samples required	Actual Number of Samples	Number of samples <i>E.coli</i> detected	Required Performance (%)	12 Month Rolling Average (%)	Compliant
July	4	12	0	98	100	✓
August	5	15	0	98	100	✓
September	4	12	0	98	100	✓
October	4	15	0	98	100	✓
November	5	20	0	98	100	✓
December	4	15	0	98	100	✓
January	4	20	0	98	100	✓
February	4	12	0	98	100	✓
March	5	20	0	98	100	✓
April	4	16	0	98	100	✓
May	5	16	0	98	100	✓
June	4	16	0	98	100	✓

Jimna <i>E.coli</i>						
2022-2023 Month	Number of samples required	Actual Number of Samples	Number of samples <i>E.coli</i> detected	Required Performance (%)	12 Month Rolling Average (%)	Compliant
July	1	4	0	98	100	✓
August	1	5	0	98	100	✓
September	1	4	0	98	100	✓
October	1	4	0	98	100	✓
November	1	5	0	98	100	✓
December	1	4	0	98	100	✓
January	1	5	0	98	100	✓
February	1	3	0	98	100	✓
March	1	5	0	98	100	✓
April	1	4	0	98	100	✓
May	1	4	0	98	100	✓
June	1	5	0	98	100	✓

Kilcoy <i>E.coli</i>						
2022-2023 Month	Number of samples required	Actual Number of Samples	Number of samples <i>E.coli</i> detected	Required Performance (%)	12 Month Rolling Average (%)	Compliant
July	4	8	0	98	100	✓
August	5	10	0	98	100	✓
September	4	8	0	98	100	✓
October	4	11	0	98	100	✓
November	5	15	0	98	100	✓
December	4	12	0	98	100	✓
January	4	15	0	98	100	✓
February	4	9	0	98	100	✓
March	5	15	0	98	100	✓
April	4	12	0	98	100	✓
May	5	12	0	98	100	✓
June	4	11	0	98	100	✓

Kooralbyn <i>E.coli</i>						
2022-2023 Month	Number of samples required	Actual Number of Samples	Number of samples <i>E.coli</i> detected	Required Performance (%)	12 Month Rolling Average (%)	Compliant
July	4	12	0	98	100	✓
August	5	15	0	98	100	✓
September	4	12	0	98	100	✓
October	4	15	0	98	100	✓
November	5	20	0	98	100	✓
December	4	16	0	98	100	✓
January	4	16	0	98	100	✓
February	4	16	0	98	100	✓
March	5	20	0	98	100	✓
April	4	16	0	98	100	✓
May	5	19	0	98	100	✓
June	4	14	0	98	100	✓

Linville <i>E.coli</i>						
2022-2023 Month	Number of samples required	Actual Number of Samples	Number of samples <i>E.coli</i> detected	Required Performance (%)	12 Month Rolling Average (%)	Compliant
July	1	4	0	98	100	✓
August	1	5	0	98	100	✓
September	1	4	0	98	100	✓
October	1	4	0	98	100	✓
November	1	5	0	98	100	✓
December	1	4	0	98	100	✓
January	1	5	0	98	100	✓
February	1	3	0	98	100	✓
March	1	5	0	98	100	✓
April	1	4	0	98	100	✓
May	1	4	0	98	100	✓
June	1	5	0	98	100	✓

Lowood <i>E.coli</i>						
2022-2023 Month	Number of samples required	Actual Number of Samples	Number of samples <i>E.coli</i> detected	Required Performance (%)	12 Month Rolling Average (%)	Compliant
July	13	120	0	98	100	✓
August	14	150	0	98	100	✓
September	13	119	0	98	100	✓
October	13	140	0	98	100	✓
November	14	145	0	98	100	✓
December	13	141	0	98	100	✓
January	13	131	0	98	100	✓
February	13	155	1	98	99.9	✓
March	14	140	0	98	99.9	✓
April	13	134	0	98	99.9	✓
May	14	152	0	98	99.9	✓
June	13	114	0	98	99.9	✓

Rathdowney <i>E.coli</i>						
2022-2023 Month	Number of samples required	Actual Number of Samples	Number of samples <i>E.coli</i> detected	Required Performance (%)	12 Month Rolling Average (%)	Compliant
July	1	4	0	98	100	✓
August	1	5	0	98	100	✓
September	1	4	0	98	100	✓
October	1	5	0	98	100	✓
November	1	8	0	98	100	✓
December	1	6	0	98	100	✓
January	1	6	0	98	100	✓
February	1	6	0	98	100	✓
March	1	7	0	98	100	✓
April	1	6	0	98	100	✓
May	1	7	0	98	100	✓
June	1	7	0	98	100	✓

South East Queensland Water Supply (Brisbane and Ipswich) <i>E.coli</i>						
2022-2023 Month	Number of samples required	Actual Number of Samples	Number of samples <i>E.coli</i> detected	Required Performance (%)	12 Month Rolling Average (%)	Compliant
July	164	665	0	98	99.9	✓
August	170	839	0	98	99.9	✓
September	164	664	0	98	99.9	✓
October	164	713	0	98	99.9	✓
November	170	787	0	98	99.9	✓
December	164	941	0	98	99.9	✓
January	164	858	0	98	99.9	✓
February	164	718	0	98	100	✓
March	170	685	0	98	100	✓
April	164	678	0	98	100	✓
May	170	741	0	98	100	✓
June	164	602	0	98	100	✓

Somerset <i>E.coli</i>						
2022-2023 Month	Number of samples required	Actual Number of Samples	Number of samples <i>E.coli</i> detected	Required Performance (%)	12 Month Rolling Average (%)	Compliant
July	1	4	0	98	100	✓
August	1	5	0	98	100	✓
September	1	4	0	98	100	✓
October	1	4	0	98	100	✓
November	1	5	0	98	100	✓
December	1	4	0	98	100	✓
January	1	5	0	98	100	✓
February	1	3	0	98	100	✓
March	1	5	0	98	100	✓
April	1	4	0	98	100	✓
May	1	4	0	98	100	✓
June	1	5	0	98	100	✓

ADDENDUM C: 2022-23- WATER QUALITY COMPLIANCE – HEALTH ASSESSMENT

Beaudesert Health Assessment							
Parameter	Units	ADWG Health Guideline	Number of tests	Exceedance Count ¹	Maximum Result	95th %-ile	Meets ADWG Health Guideline ²
Arsenic	mg/L	0.01	8	0	<0.001	<0.001	✓
Barium	mg/L	2	8	0	0.050	0.049	✓
Cadmium	mg/L	0.002	8	0	<0.001	<0.001	✓
Chlorate	mg/L	0.8*	50	0	0.080	0.020	NR
Chlorine (Free)	mg/L	5	304	0	3.0	2.4	✓
Chlorine (Total)	mg/L	5	304	0	3.4	2.6	✓
Chromium	mg/L	0.05	8	0	<0.001	<0.001	✓
Copper	mg/L	2	8	0	0.012	0.011	✓
Dichloroacetic Acid	ug/L	100	8	0	37	35	✓
Fluoride	mg/L	1.5	13	0	1.1	0.93	✓
Lead	mg/L	0.01	8	0	<0.001	<0.001	✓
Manganese	mg/L	0.5	100	0	<0.001	<0.001	✓
Monochloroacetic Acid	ug/L	150	8	0	<10	<0.001	✓
Nickel	mg/L	0.02	8	0	<0.001	<0.001	✓
Trichloroacetic Acid	ug/L	100	8	0	19	18	✓
Trihalomethanes (Total)	ug/L	250	208	1	260	170	✓

Boonah-Kalbar Health Assessment							
Parameter	Units	ADWG Health Guideline	Number of tests	Exceedance Count ¹	Maximum Result	95th %-ile	Meets ADWG Health Guideline ²
Arsenic	mg/L	0.01	4	0	<0.001	<0.001	✓
Barium	mg/L	2	4	0	0.032	0.031	✓
Cadmium	mg/L	0.002	4	0	<0.001	<0.001	✓
Chlorate	mg/L	0.8*	58	0	0.73	0.55	NR
Chlorine (Free)	mg/L	5	465	0	2.5	2.1	✓
Chlorine (Total)	mg/L	5	465	0	2.9	2.4	✓
Chromium	mg/L	0.05	4	0	<0.001	<0.001	✓
Copper	mg/L	2	4	0	<0.001	<0.001	✓
Dichloroacetic Acid	ug/L	100	9	0	60	57	✓
Fluoride	mg/L	1.5	13	0	0.86	0.85	✓
Lead	mg/L	0.01	4	0	<0.001	<0.001	✓
Manganese	mg/L	0.5	119	0	0.006	<0.001	✓
Monochloroacetic Acid	ug/L	150	9	0	<10	<0.001	✓
Nickel	mg/L	0.02	4	0	<0.001	<0.001	✓
Trichloroacetic Acid	ug/L	100	9	0	30	30	✓
Trihalomethanes (Total)	ug/L	250	52	0	150	140	✓

¹ Australian Drinking Water Guidelines 2011 Chapter 6.3 'Guidance on rounding'.

² Australian Drinking Water Guidelines 2011 Information Sheet 3.2

* Interim Queensland Health Guideline Limit

Canungra Health Assessment							
Parameter	Units	ADWG Health Guideline	Number of tests	Exceedance Count ¹	Maximum Result	95th %-ile	Meets ADWG Health Guideline ²
Arsenic	mg/L	0.01	4	0	<0.001	<0.001	✓
Barium	mg/L	2	4	0	0.009	0.009	✓
Cadmium	mg/L	0.002	4	0	<0.001	<0.001	✓
Chlorate	mg/L	0.8*	13	0	0.37	0.29	NR
Chlorine (Free)	mg/L	5	66	0	3.0	2.8	✓
Chlorine (Total)	mg/L	5	66	0	3.2	3.1	✓
Chromium	mg/L	0.05	4	0	<0.001	<0.001	✓
Copper	mg/L	2	4	0	0.0017	0.002	✓
Dichloroacetic Acid	ug/L	150	4	0	18	17	✓
Fluoride	mg/L	1.5	13	0	1.0	0.93	✓
Lead	mg/L	0.01	4	0	<0.001	<0.001	✓
Manganese	mg/L	0.5	50	0	0.011	0.006	✓
Monochloroacetic Acid	ug/L	100	4	0	<10	<0.001	✓
Nickel	mg/L	0.02	4	0	<0.001	<0.001	✓
Trichloroacetic Acid	ug/L	150	4	0	13	12	✓
Trihalomethanes (Total)	ug/L	250	13	0	110	100	✓

Esk-Toogoolawah Health Assessment							
Parameter	Units	ADWG Health Guideline	Number of tests	Exceedance Count ¹	Maximum Result	95th %-ile	Meets ADWG Health Guideline ²
Arsenic	mg/L	0.01	4	0	<0.001	<0.001	✓
Barium	mg/L	2	4	0	0.031	0.031	✓
Cadmium	mg/L	0.002	4	0	<0.001	<0.001	✓
Chlorate	mg/L	0.8*	15	0	0.64	0.61	NR
Chlorine (Free)	mg/L	5	189	0	2.7	2.2	✓
Chlorine (Total)	mg/L	5	189	0	2.8	2.5	✓
Chromium	mg/L	0.05	4	0	<0.001	<0.001	✓
Copper	mg/L	2	4	0	0.0022	0.002	✓
Dichloroacetic Acid	ug/L	100	4	0	57	55	✓
Fluoride	mg/L	1.5	13	0	0.86	0.82	✓
Lead	mg/L	0.01	4	0	<0.001	<0.001	✓
Manganese	mg/L	0.5	100	0	0.005	0.004	✓
Monochloroacetic Acid	ug/L	150	4	0	<10	<0.001	✓
Nickel	mg/L	0.02	4	0	<0.001	<0.001	✓
Trichloroacetic Acid	ug/L	100	4	0	25	25	✓
Trihalomethanes (Total)	ug/L	250	19	0	190	170	✓

¹ Australian Drinking Water Guidelines 2011 Chapter 6.3 'Guidance on rounding'.

² Australian Drinking Water Guidelines 2011 Information Sheet 3.2

* Interim Queensland Health Guideline Limit

Jimna Health Assessment							
Parameter	Units	ADWG Health Guideline	Number of tests	Exceedance Count ¹	Maximum Result	95th %-ile	Meets ADWG Health Guideline ²
Arsenic	mg/L	0.01	4	0	<0.001	<0.001	✓
Barium	mg/L	2	4	0	0.016	0.016	✓
Cadmium	mg/L	0.002	4	0	<0.001	<0.001	✓
Chlorate	mg/L	0.8*	13	0	0.13	0.13	NR
Chlorine (Free)	mg/L	5	52	0	3.3	3.0	✓
Chlorine (Total)	mg/L	5	52	0	3.5	3.3	✓
Chromium	mg/L	0.05	4	0	<0.001	<0.001	✓
Copper	mg/L	2	4	0	0.0034	0.003	✓
Dichloroacetic Acid	ug/L	100	4	0	30	30	✓
Fluoride	mg/L	1.5	13	0	0.52	0.42	✓
Lead	mg/L	0.01	4	0	<0.001	<0.001	✓
Manganese	mg/L	0.5	50	0	0.071	0.013	✓
Monochloroacetic Acid	ug/L	150	4	0	<10	<0.001	✓
Nickel	mg/L	0.02	4	0	<0.001	<0.001	✓
Trichloroacetic Acid	ug/L	100	4	0	26	26	✓
Trihalomethanes (Total)	ug/L	250	21	0	140	120	✓

Kilcoy Health Assessment							
Parameter	Units	ADWG Health Guideline	Number of tests	Exceedance Count ¹	Maximum Result	95th %-ile	Meets ADWG Health Guideline ²
Arsenic	mg/L	0.01	4	0	<0.001	<0.001	✓
Barium	mg/L	2	4	0	0.019	0.019	✓
Cadmium	mg/L	0.002	4	0	<0.001	<0.001	✓
Chlorate	mg/L	0.8*	13	0	0.01	0.004	NR
Chlorine (Free)	mg/L	5	138	0	3.0	2.6	✓
Chlorine (Total)	mg/L	5	138	0	3.1	2.9	✓
Chromium	mg/L	0.05	4	0	<0.001	<0.001	✓
Copper	mg/L	2	4	0	0.0093	0.009	✓
Dichloroacetic Acid	ug/L	100	4	0	55	52	✓
Fluoride	mg/L	1.5	13	0	0.87	0.86	✓
Lead	mg/L	0.01	4	0	<0.001	<0.001	✓
Manganese	mg/L	0.5	50	0	0.009	0.001	✓
Monochloroacetic Acid	ug/L	150	4	0	<10	<0.001	✓
Nickel	mg/L	0.02	4	0	0.0019	0.002	✓
Trichloroacetic Acid	ug/L	100	4	0	31	28	✓
Trihalomethanes (Total)	ug/L	250	21	0	130	120	✓

¹ Australian Drinking Water Guidelines 2011 Chapter 6.3 'Guidance on rounding'.

² Australian Drinking Water Guidelines 2011 Information Sheet 3.2

* Interim Queensland Health Guideline Limit

Kooralbyn Health Assessment							
Parameter	Units	ADWG Health Guideline	Number of tests	Exceedance Count ¹	Maximum Result	95th %-ile	Meets ADWG Health Guideline ²
Arsenic	mg/L	0.01	4	0	<0.001	<0.001	✓
Barium	mg/L	2	4	0	0.040	0.040	✓
Cadmium	mg/L	0.002	4	0	<0.001	<0.001	✓
Chlorate	mg/L	0.8*	37	0	0.20	0.14	NR
Chlorine (Free)	mg/L	5	191	0	2.8	2.4	✓
Chlorine (Total)	mg/L	5	191	0	3.0	2.5	✓
Chromium	mg/L	0.05	4	0	<0.001	<0.001	✓
Copper	mg/L	2	4	0	0.0014	0.001	✓
Dichloroacetic Acid	ug/L	100	4	0	11	9.7	✓
Fluoride	mg/L	1.5	13	0	1.0	0.91	✓
Lead	mg/L	0.01	4	0	<0.001	<0.001	✓
Manganese	mg/L	0.5	50	0	0.020	0.011	✓
Monochloroacetic Acid	ug/L	150	4	0	<10	<0.001	✓
Nickel	mg/L	0.02	4	0	<0.001	<0.001	✓
Trichloroacetic Acid	ug/L	100	4	0	<10	<0.001	✓
Trihalomethanes (Total)	ug/L	250	38	0	130	130	✓

Linville Health Assessment							
Parameter	Units	ADWG Health Guideline	Number of tests	Exceedance Count ¹	Maximum Result	95th %-ile	Meets ADWG Health Guideline ²
Arsenic	mg/L	0.01	4	0	<0.001	<0.001	✓
Barium	mg/L	2	4	0	0.040	0.039	✓
Cadmium	mg/L	0.002	4	0	<0.001	<0.001	✓
Chlorate	mg/L	0.8*	13	0	0.14	0.12	NR
Chlorine (Free)	mg/L	5	52	0	3.7	2.9	✓
Chlorine (Total)	mg/L	5	52	0	4.0	3.2	✓
Chromium	mg/L	0.05	4	0	<0.001	<0.001	✓
Copper	mg/L	2	4	0	0.0057	0.005	✓
Dichloroacetic Acid	ug/L	100	4	0	<10	<0.001	✓
Fluoride	mg/L	1.5	13	0	0.62	0.48	✓
Lead	mg/L	0.01	4	0	<0.001	<0.001	✓
Manganese	mg/L	0.5	50	0	0.008	0.006	✓
Monochloroacetic Acid	ug/L	150	4	0	<10	<0.001	✓
Nickel	mg/L	0.02	4	0	<0.001	<0.001	✓
Trichloroacetic Acid	ug/L	100	4	0	<10	<0.001	✓
Trihalomethanes (Total)	ug/L	250	20	0	190	100	✓

¹ Australian Drinking Water Guidelines 2011 Chapter 6.3 'Guidance on rounding'.

² Australian Drinking Water Guidelines 2011 Information Sheet 3.2

* Interim Queensland Health Guideline Limit

Lowood Health Assessment							
Parameter	Units	ADWG Health Guideline	Number of tests	Exceedance Count ¹	Maximum Result	95th %-ile	Meets ADWG Health Guideline ²
Arsenic	mg/L	0.01	31	0	<0.001	<0.001	✓
Barium	mg/L	2	31	0	0.034	0.031	✓
Cadmium	mg/L	0.002	31	0	<0.001	<0.001	✓
Chlorate	mg/L	0.8*	176	0	0.57	0.34	NR
Chlorine (Free)	mg/L	5	1641	0	>4.6	2.3	✓
Chlorine (Total)	mg/L	5	1641	1	5.5	2.7	✓
Chromium	mg/L	0.05	31	0	<0.001	<0.001	✓
Copper	mg/L	2	31	0	0.0066	0.006	✓
Dichloroacetic Acid	ug/L	100	39	0	86	84	✓
Fluoride	mg/L	1.5	102	0	0.88	0.81	✓
Lead	mg/L	0.01	31	0	<0.001	<0.001	✓
Manganese	mg/L	0.5	574	0	0.059	0.003	✓
Monochloroacetic Acid	ug/L	150	39	0	<10	<0.001	✓
Nickel	mg/L	0.02	31	0	0.0011	<0.001	✓
Trichloroacetic Acid	ug/L	100	39	0	71	62	✓
Trihalomethanes (Total)	ug/L	250	438	1	260	200	✓

Rathdowney Health Assessment							
Parameter	Units	ADWG Health Guideline	Number of tests	Exceedance Count ¹	Maximum Result	95th %-ile	Meets ADWG Health Guideline ²
Arsenic	mg/L	0.01	4	0	<0.001	<0.001	✓
Barium	mg/L	2	4	0	0.062	0.061	✓
Cadmium	mg/L	0.002	4	0	<0.001	<0.001	✓
Chlorate	mg/L	0.8*	13	0	0.01	0.010	NR
Chlorine (Free)	mg/L	5	71	0	2.0	1.9	✓
Chlorine (Total)	mg/L	5	71	0	2.2	2.1	✓
Chromium	mg/L	0.05	4	0	<0.001	<0.001	✓
Copper	mg/L	2	4	0	0.0025	0.002	✓
Dichloroacetic Acid	ug/L	100	4	0	19	16	✓
Fluoride	mg/L	1.5	13	0	0.79	0.44	✓
Lead	mg/L	0.01	4	0	<0.001	<0.001	✓
Manganese	mg/L	0.5	32	0	0.025	<0.001	✓
Monochloroacetic Acid	ug/L	150	4	0	<10	<0.001	✓
Nickel	mg/L	0.02	4	0	<0.001	<0.001	✓
Trichloroacetic Acid	ug/L	100	4	0	<10	<0.001	✓
Trihalomethanes (Total)	ug/L	250	21	0	200	190	✓

¹ Australian Drinking Water Guidelines 2011 Chapter 6.3 'Guidance on rounding'.

² Australian Drinking Water Guidelines 2011 Information Sheet 3.2

* Interim Queensland Health Guideline Limit

South East Queensland Water Supply System (Brisbane and Ipswich) Health Assessment							
Parameter	Units	ADWG Health Guideline	Number of tests	Exceedance Count ¹	Maximum Result	95th %-ile	Meets ADWG Health Guideline ²
Arsenic	mg/L	0.01	10	0	<0.001	<0.001	✓
Barium	mg/L	2	10	0	0.029	0.029	✓
Cadmium	mg/L	0.002	10	0	<0.001	<0.001	✓
Chlorate	mg/L	0.8*	359	2	1.2	0.52	NR
Chlorine (Free)	mg/L	5	1145	0	3.6	1.3	✓
Chlorine (Total)	mg/L	5	8871	1	5.3	3.4	✓
Chromium	mg/L	0.05	10	0	<0.001	<0.001	✓
Copper	mg/L	2	10	0	0.0096	0.009	✓
Dichloroacetic Acid	ug/L	100	33	0	31	27	✓
Fluoride	mg/L	1.5	98	0	0.92	0.82	✓
Lead	mg/L	0.01	10	0	<0.001	<0.001	✓
Manganese	mg/L	0.5	2780	1	1.2	0.010	✓
Monochloroacetic Acid	ug/L	150	33	0	<10	<0.001	✓
NDMA	ug/L	100	6	0	<100	<100	✓
Nickel	mg/L	0.02	10	0	0.0011	<0.001	✓
Nitrate	mg/L	50	1951	0	7.1	3.2	✓
Nitrite	mg/L	3	1952	0	1.7	1.0	✓
Trichloroacetic Acid	ug/L	100	33	0	27	15	✓
Trihalomethanes (Total)	ug/L	250	328	0	200	140	✓

¹ Australian Drinking Water Guidelines 2011 Chapter 6.3 'Guidance on rounding'.

² Australian Drinking Water Guidelines 2011 Information Sheet 3.2

* Interim Queensland Health Guideline Limit

Somerset Health Assessment							
Parameter	Units	ADWG Health Guideline	Number of tests	Exceedance Count ¹	Maximum Result	95th %-ile	Meets ADWG Health Guideline ²
Arsenic	mg/L	0.01	4	0	<0.001	<0.001	✓
Barium	mg/L	2	4	0	0.017	0.017	✓
Cadmium	mg/L	0.002	4	0	<0.001	<0.001	✓
Chlorate	mg/L	0.8*	13	0	0.17	0.16	NR
Chlorine (Free)	mg/L	5	52	0	2.4	2.4	✓
Chlorine (Total)	mg/L	5	52	0	2.6	2.6	✓
Chromium	mg/L	0.05	4	0	<0.001	<0.001	✓
Copper	mg/L	2	4	0	0.0038	0.004	✓
Dichloroacetic Acid	ug/L	100	4	0	56	54	✓
Fluoride	mg/L	1.5	13	0	0.50	0.30	✓
Lead	mg/L	0.01	4	0	<0.001	<0.001	✓
Manganese	mg/L	0.5	50	0	0.038	0.005	✓
Monochloroacetic Acid	ug/L	150	4	0	<10	<0.001	✓
Nickel	mg/L	0.02	4	0	<0.001	<0.001	✓
Trichloroacetic Acid	ug/L	100	4	0	41	39	✓
Trihalomethanes (Total)	ug/L	250	21	0	150	140	✓

¹ Australian Drinking Water Guidelines 2011 Chapter 6.3 'Guidance on rounding'.

² Australian Drinking Water Guidelines 2011 Information Sheet 3.2

* Interim Queensland Health Guideline Limit

ADDENDUM D: 2022-23 WATER QUALITY – AESTHETIC ASSESSMENT

Parameter (Median values)	Units	ADWG Aesthetic Guidance Value ¹	Beaudesert	Boonah-Kalbar	Canungra	Esk-Toogoolawah	Jimna	Kilcoy	Kooralbyn	Linville	Lowood	Rathdowney	SEQ Water Supply (Brisbane and Ipswich)	Somerset Township
2-Methyl isoborneol	ng/L	5	<2	<2	<2	<2	<2	3.4	<2	<2	<2	<2	2.8	<2
Aluminium	mg/L	0.20	0.026	0.030	0.008	0.038	0.020	0.016	0.019	0.002	0.016	0.012	0.029	0.013
Ammonia	mg/L	0.50	NT	NT	NT	NT	NT	NT	NT	NT	NT	NT	0.23	NT
Chloride	mg/L	250	120	45	30	59	38	36	100	140	57	160	62	35
Colour (Apparent)	PCU	-	<1	<1	<1	1.3	1.0	1.6	1.5	1.3	1.5	<1	2.7	1.5
Colour (True)	PCU	15	<1	<1	<1	<1	<1	<1	<1	<1	<1	<1	<1	<1
Conductivity	uS/cm	1000	820	480	270	470	370	340	740	880	440	800	480	410
Geosmin	ng/L	5	<2	<2	3.5	2.2	2.5	2.1	<2	<2	<2	<2	3.7	<2
Iron	mg/L	0.30	0.006	0.007	0.002	0.010	0.004	0.029	0.006	0.002	0.013	0.015	0.009	0.015
Langelier Index	-	-	-0.13	-0.58	-0.09	-0.25	-0.83	-0.50	0.18	0.38	-0.35	0.35	0.01	-0.73
pH	pH Unit	6.5 - 8.5	7.6	7.7	8.1	7.4	7.6	7.6	7.9	7.5	7.4	8.1	7.8	7.5
Silica	mg/L	80	19	17	22	9.3	11	6.0	19	21	9.5	16	11	4.7
Sodium	mg/L	180	83	65	18	45	47	36	66	94	31	84	44	60
Sulphate (as SO ₄)	mg/L	250	87	71	2.3	44	48	40	76	20	42	19	49	70
Temperature	deg C	-	22	21	21	24	20	23	22	21	23	22	23	23
Total Dissolved Solids	mg/L	600	530	310	170	300	230	220	480	560	280	510	310	260
Total Hardness	mg/L	200	210	81	72	120	58	75	210	200	130	190	130	62
Turbidity	NTU	5	<0.1	<0.1	<0.1	0.12	0.11	0.13	0.12	0.12	0.13	0.10	0.15	0.12
Zinc	mg/L	3	0.004	<0.001	<0.001	0.001	0.003	0.004	0.003	0.002	0.002	0.004	0.001	0.009
Meets ADWG Aesthetic Guideline Value ²	✓	✓	✗	✓	✓	✓	✓	✓	✗	✓	✓	✓	✓	✓

¹ Australian Drinking Water Guidelines 2011 Chapter 6.3 'Guidance on rounding'.

² Australian Drinking Water Guidelines 2011 Information Sheet 3.2

9. REPORT PUBLISHING INFORMATION

TELL US WHAT YOU THINK
ABOUT THIS REPORT

Visit us at our Head Office:

Level 10, 31 Duncan Street
Fortitude Valley QLD 4006
(Monday – Friday 8.30am – 4.00pm)

Phone us on:

13 26 57 (8.00am – 5.00pm weekdays)
+61 7 3307 2851 (From overseas)

Email us at:

customerservice@urbanutilities.com.au

ISSN: 1838-5575

© Urban Utilities 2023



