

# Progress Update: Tantivy Street Pump Station Upgrade

You can rely on us to keep things flowing. From time-to-time, we need to upgrade your local wastewater network and associated infrastructure.

## What's been happening?

As part of our commitment to provide excellence in wastewater services, our delivery partner, Downer WSP, commenced works to upgrade the Tantivy Street Pump Station in April 2023.

The Tantivy Street Pump Station was constructed in the 1940s and services approximately 39,000 customers in the Ipswich region. The upgrade will include the construction of a new Pump Station to cater for our growing community, the installation of a raised switchboard platform to improve flood resilience in wet weather events, as well as the installation of new maintenance holes and associated pipework in the network.

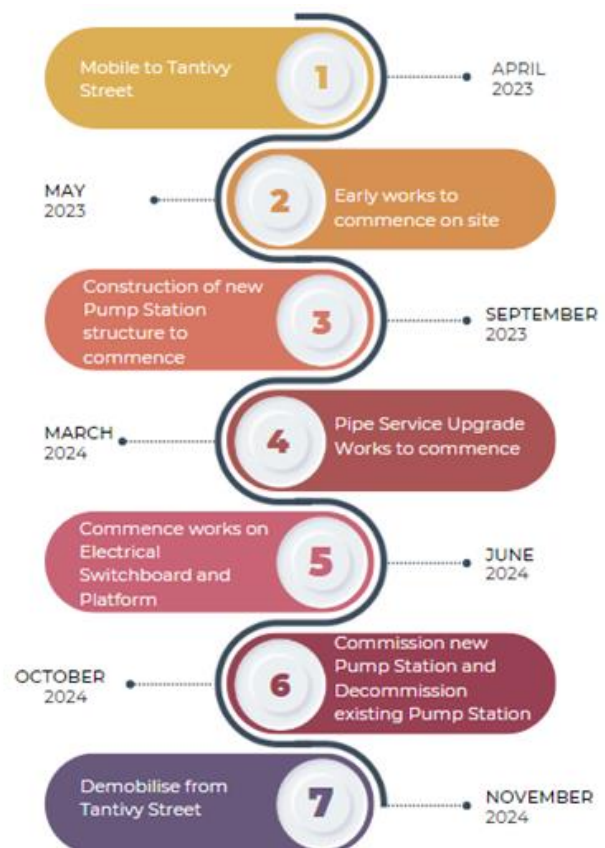
## What's next?

As we celebrate the one-year milestone, we are pleased to let you know of the project achievements so far, while providing you with an update on what is yet to come. As of May 2024, project progress includes:

- 75% of maintenance holes have now been constructed.
- 75% of the sewer gravity network around the pump station has been installed.
- The Sewer Pump Station structure is underway, with the installation of the switchboard platform due to commence late July, followed by electrical components in August and September 2024.
- The Sewer Pump Station Rising Main to be installed as the final component of the project.

Teams are currently on track to complete the remaining works by November 2024, pending site and weather conditions.

## Project Timeline



## What can I expect?

**Noise and dust** – during construction residents may experience varying levels of noise and dust from construction machinery, minor vibrations and changed vehicle movements. We'll minimise these where we can.

**Work hours** - We'll be working during the day, between 6:30am and 6:30pm, Monday to Saturday. In some situations, night works may be required between 7:00pm-5:00am.

Please note, our crews will continue works over the **show day public holiday** (Friday 17 May 2024) to remain on track for project completion.

**Construction activities** - residents may experience increased activity near the pump station and access roads.

**Traffic control** - Changed traffic conditions will be in place around work areas and access roads. Traffic management will be in place to look after the safety of our road users.

**Temporary work sites and holding area's** - a site office and holding area for materials and machinery is located at the end of Delacy Street, Tivoli, on Ipswich City Council reserve land.

**Odour** - Some intermittent odour may occur when maintenance hole lids are removed or during ventilation. Our crews will monitor odour and use deodorising pumps during these works.

**Wastewater services** – There will be no interruption to your wastewater services during these works. We'll minimise construction impacts to the extent possible, including managing noise and dust at the source and reviewing work methods as required.

**Restoration** – we will restore our work areas as close to the original as possible, once the work is complete.

## Map of construction area



## How are we doing?

We appreciate that our work can be impactful at times, and while we endeavour to minimise these impacts wherever possible, your feedback will help us measure our overall performance and key areas of importance to our community.

Upon survey completion, you may opt to participate in a prize draw for a \$100 gift card. Simply scan the QR code below to take part:



## For more information:

- Phone Samantha Jacobsen on **0419 623 548** or after hours **1300 992 605**
- Email or register for updates at: **Community.Enquiries@downergroup.com**

Thank you for your patience and understanding while we complete this essential work.